

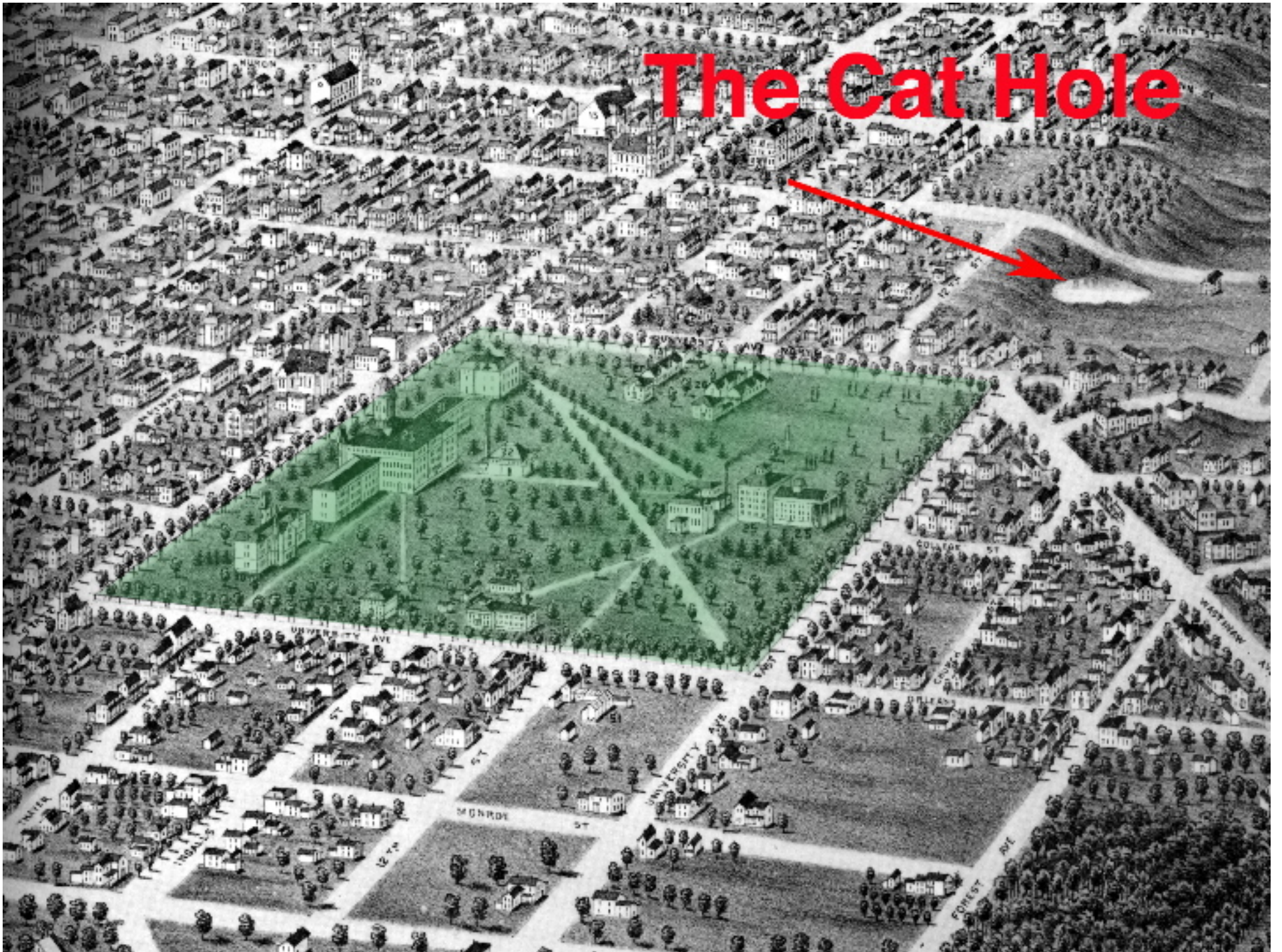


In the beginning...

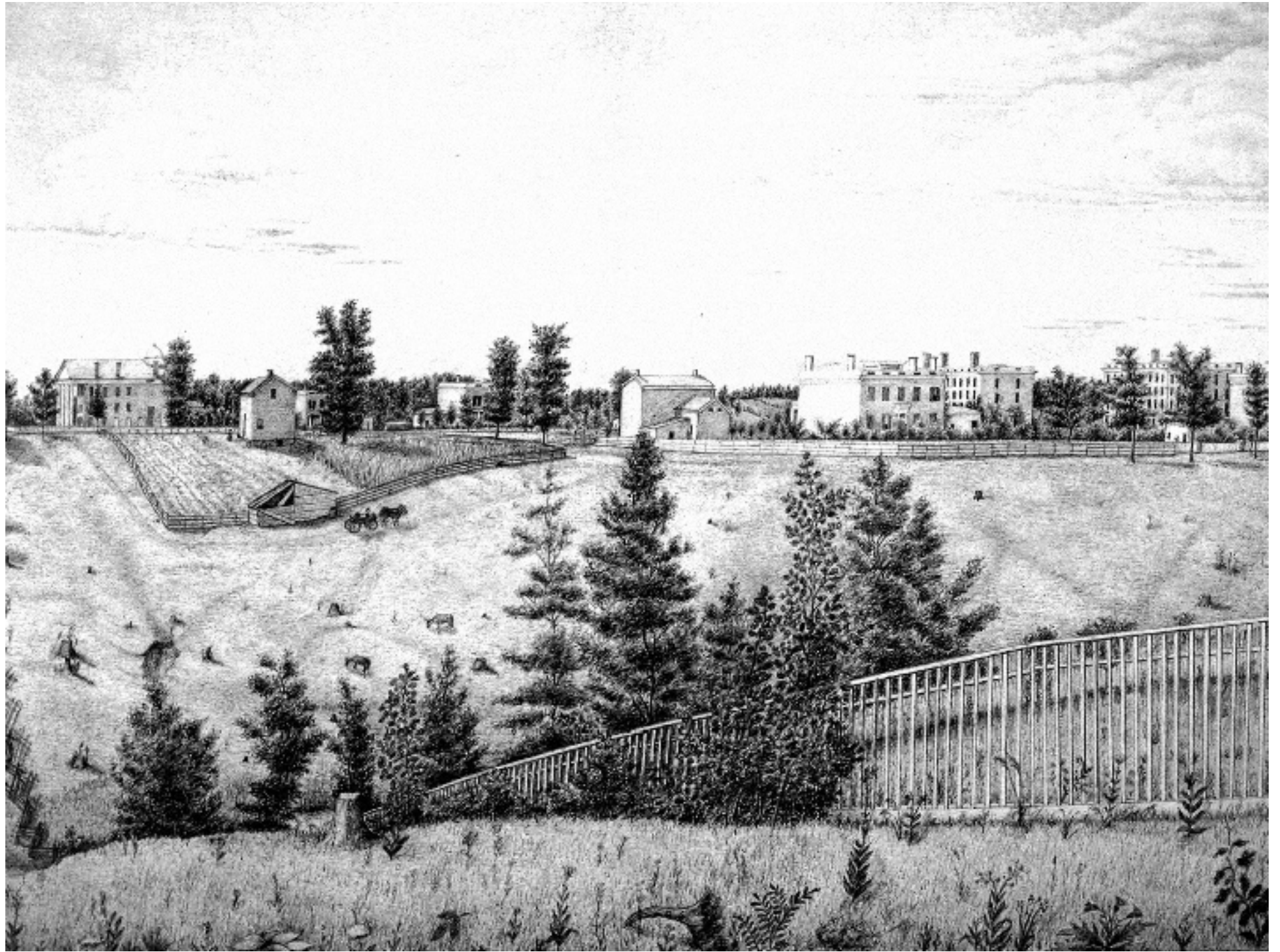
there was the central 40 acre campus...

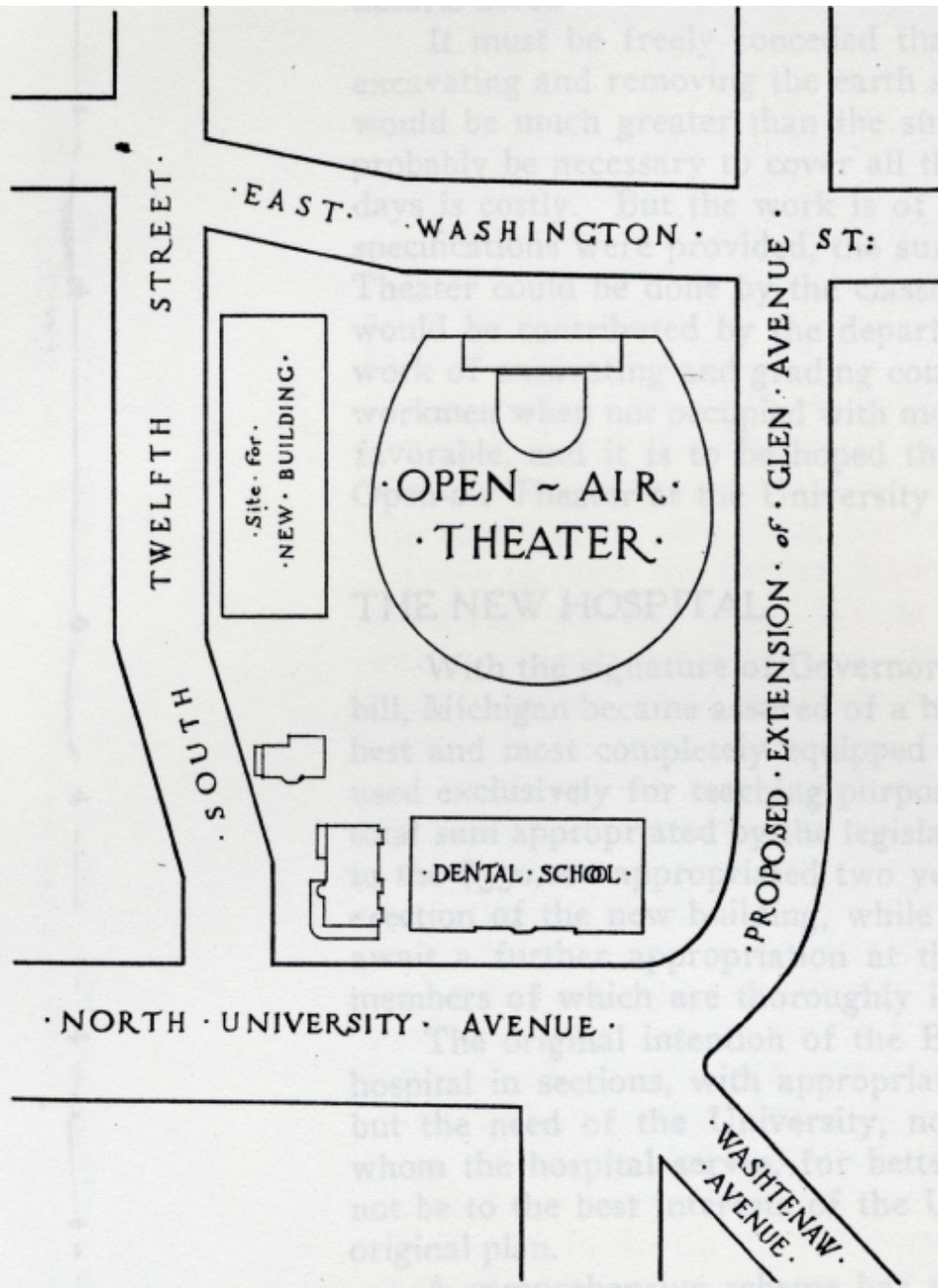






The Cat Hole





THE SITE OF THE PROPOSED OPEN-AIR THEATER









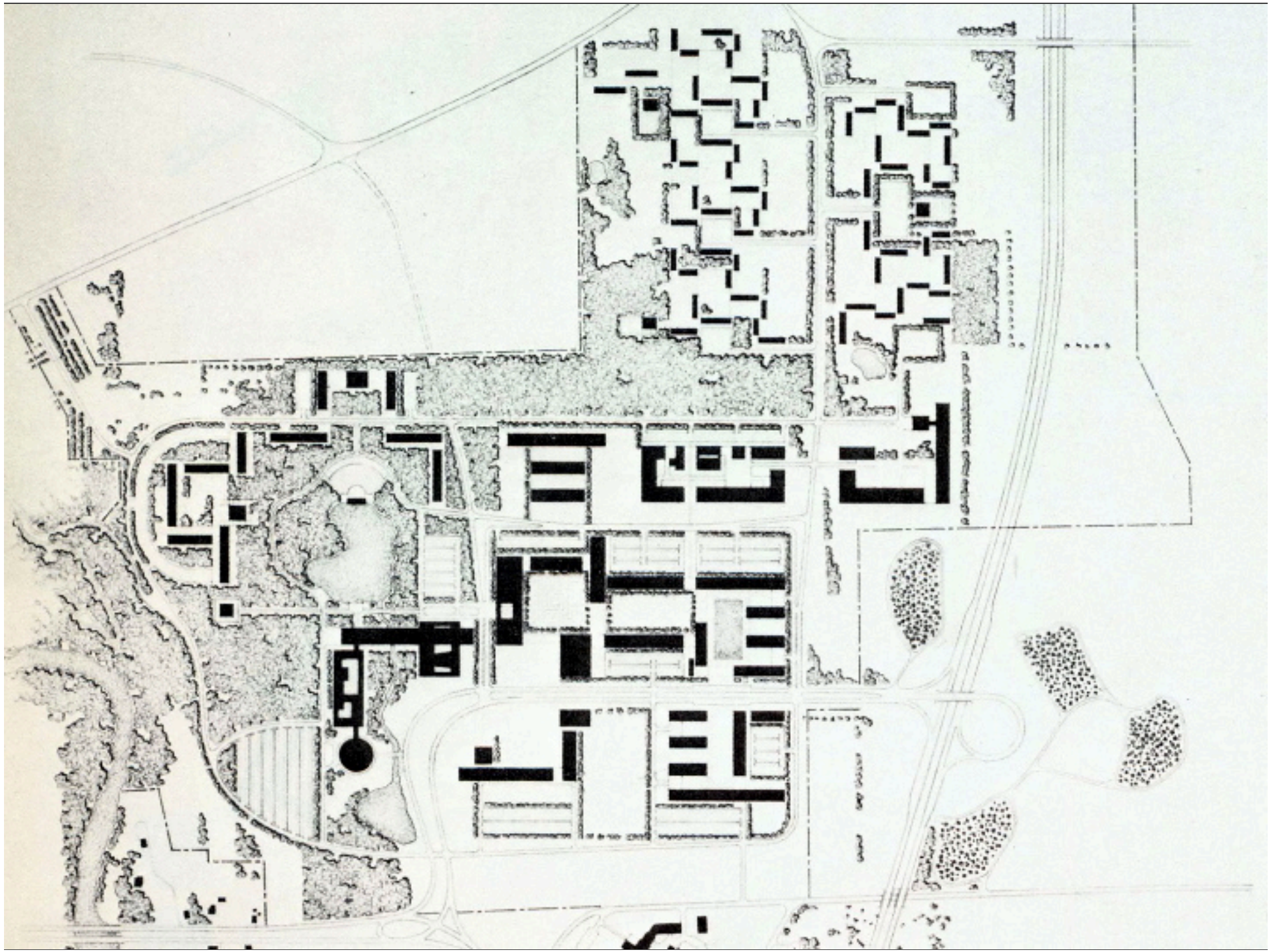


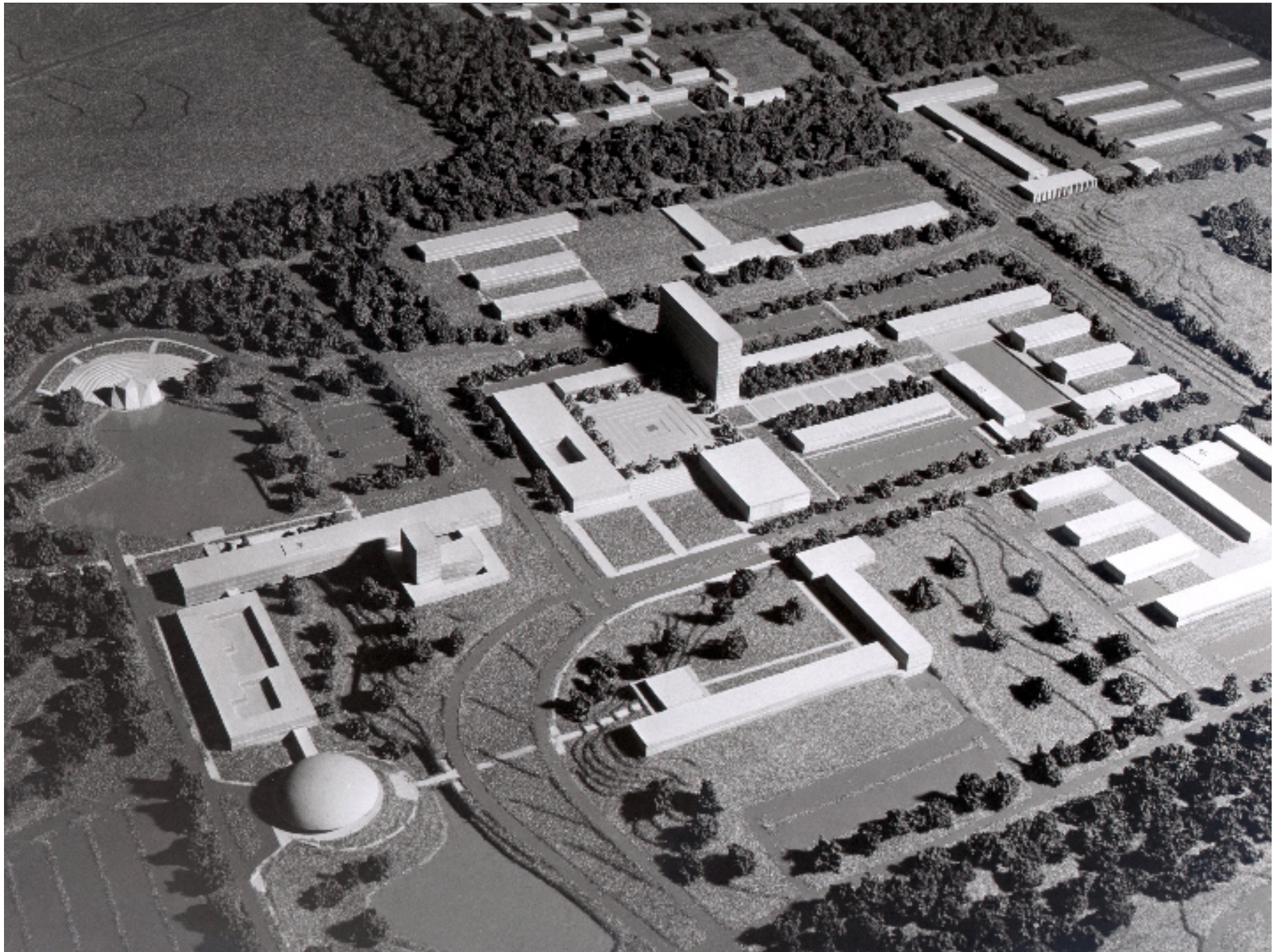




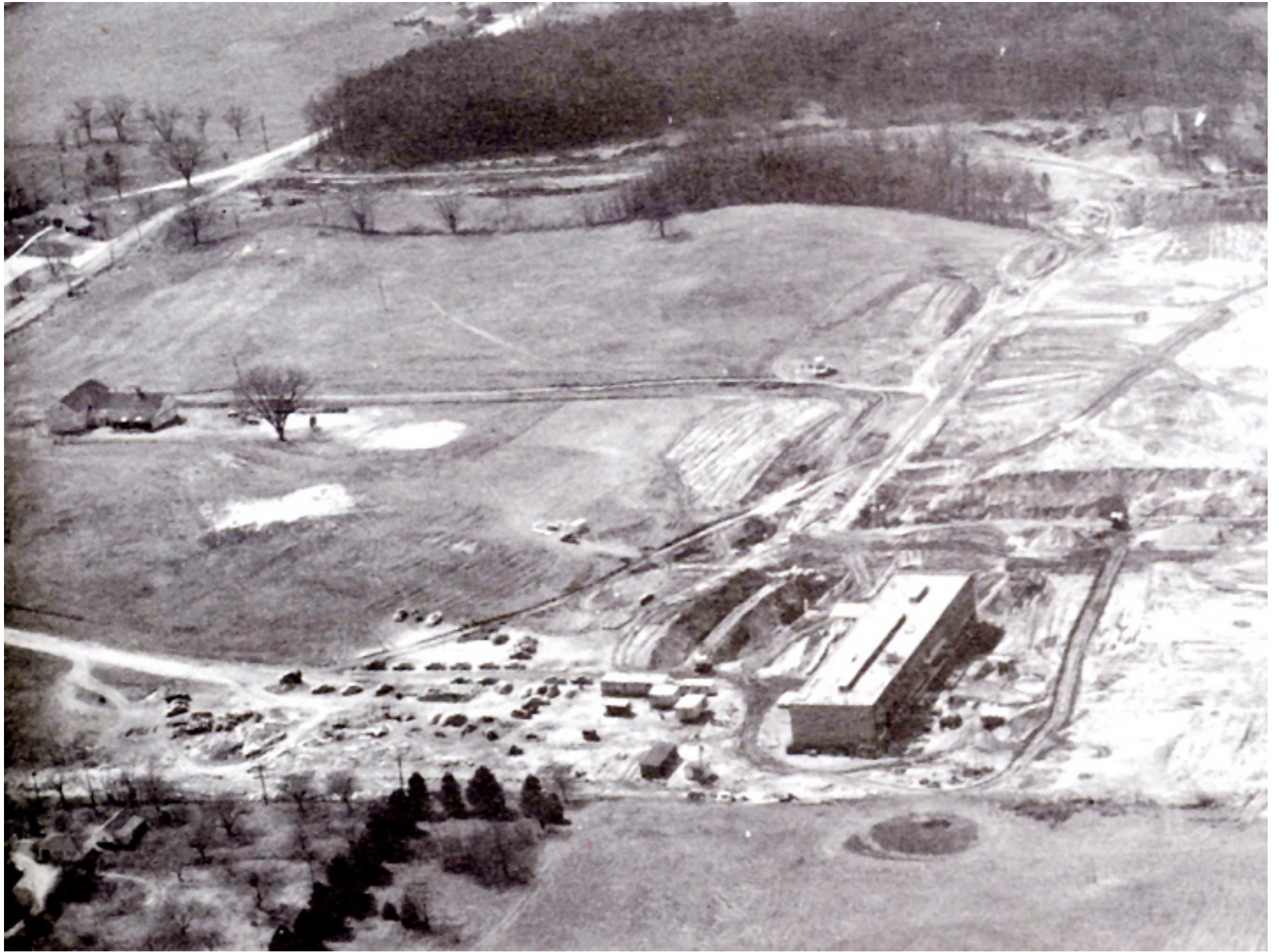


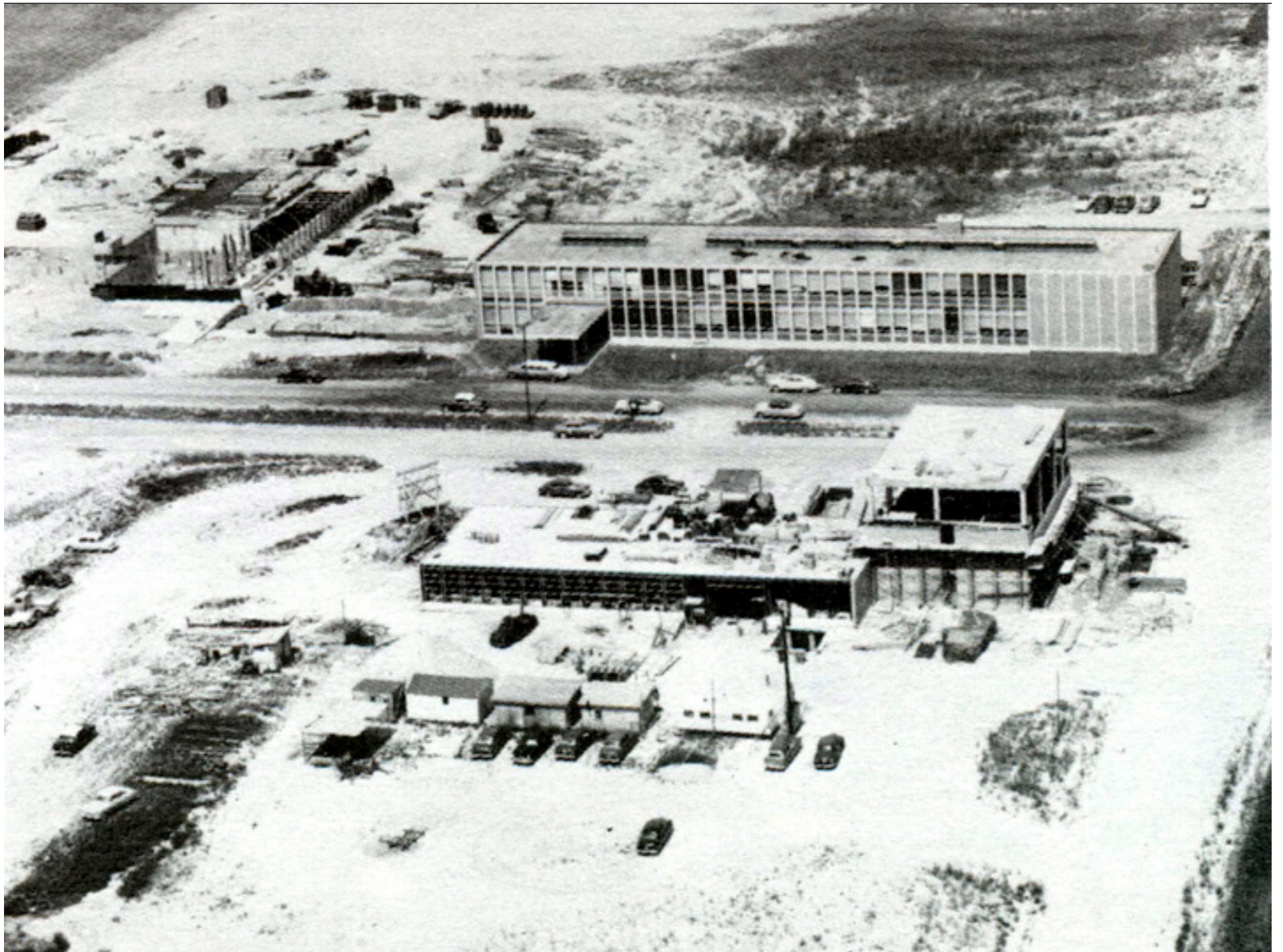
The 1950s



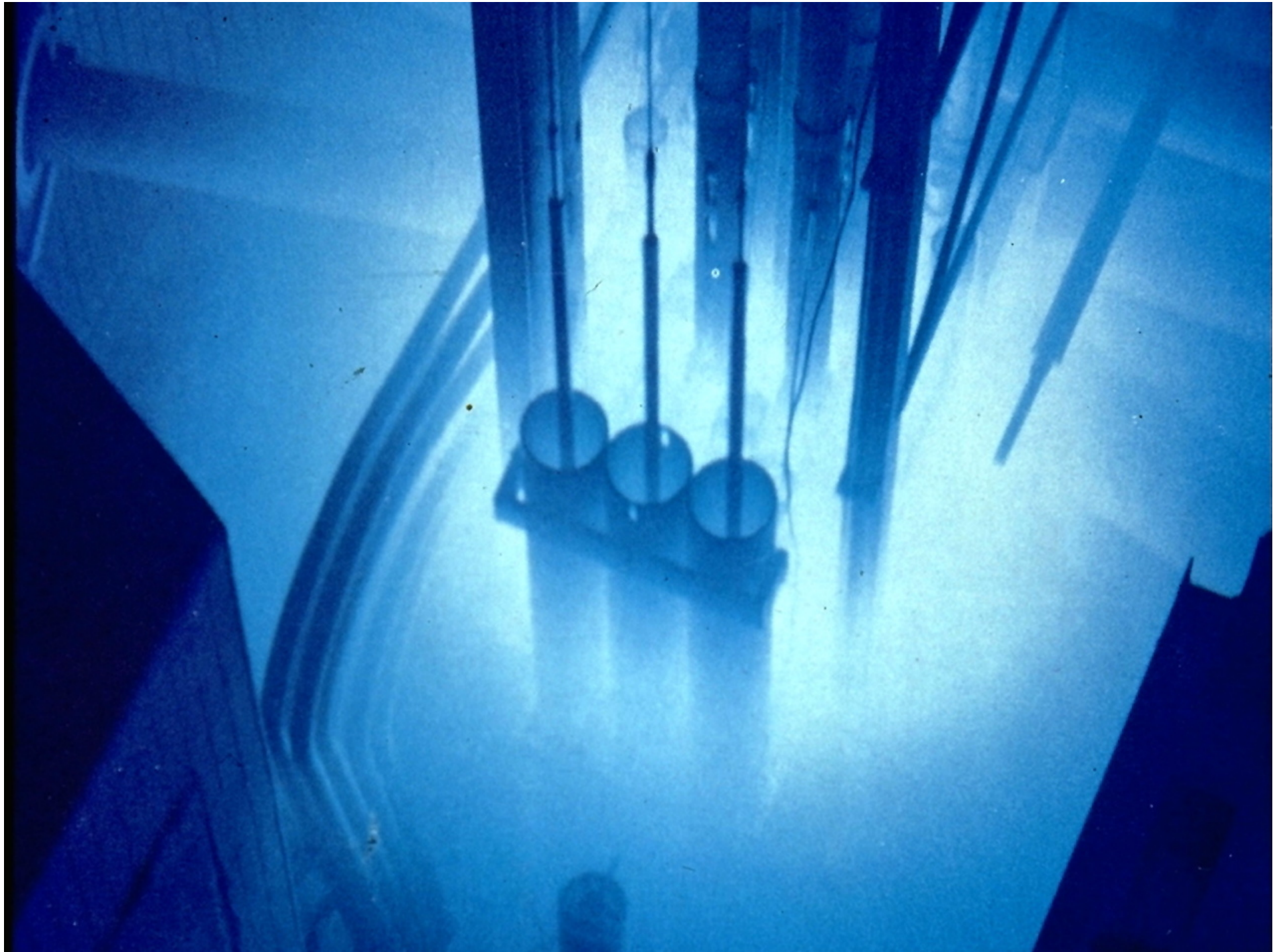
















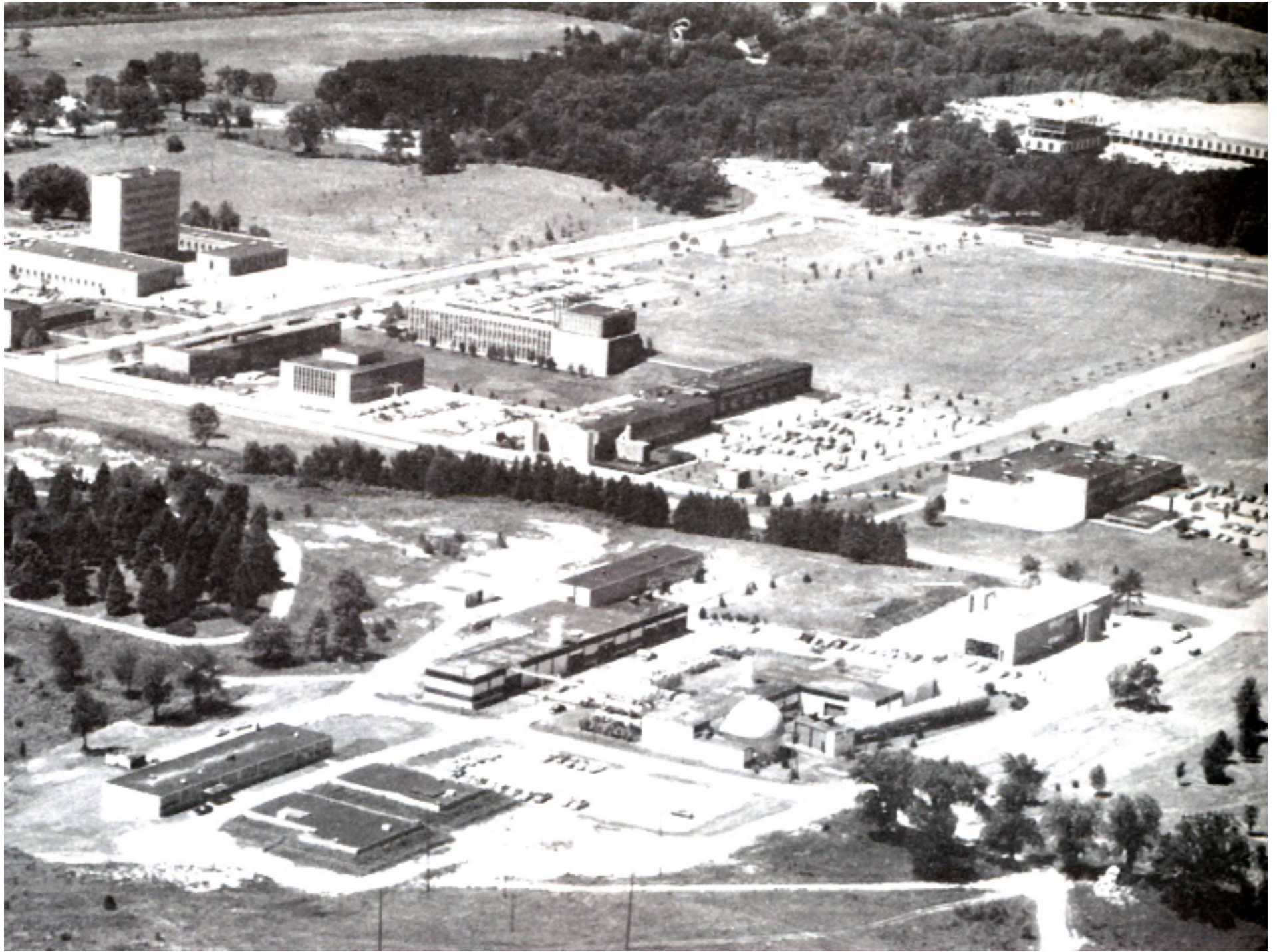


The 1960s



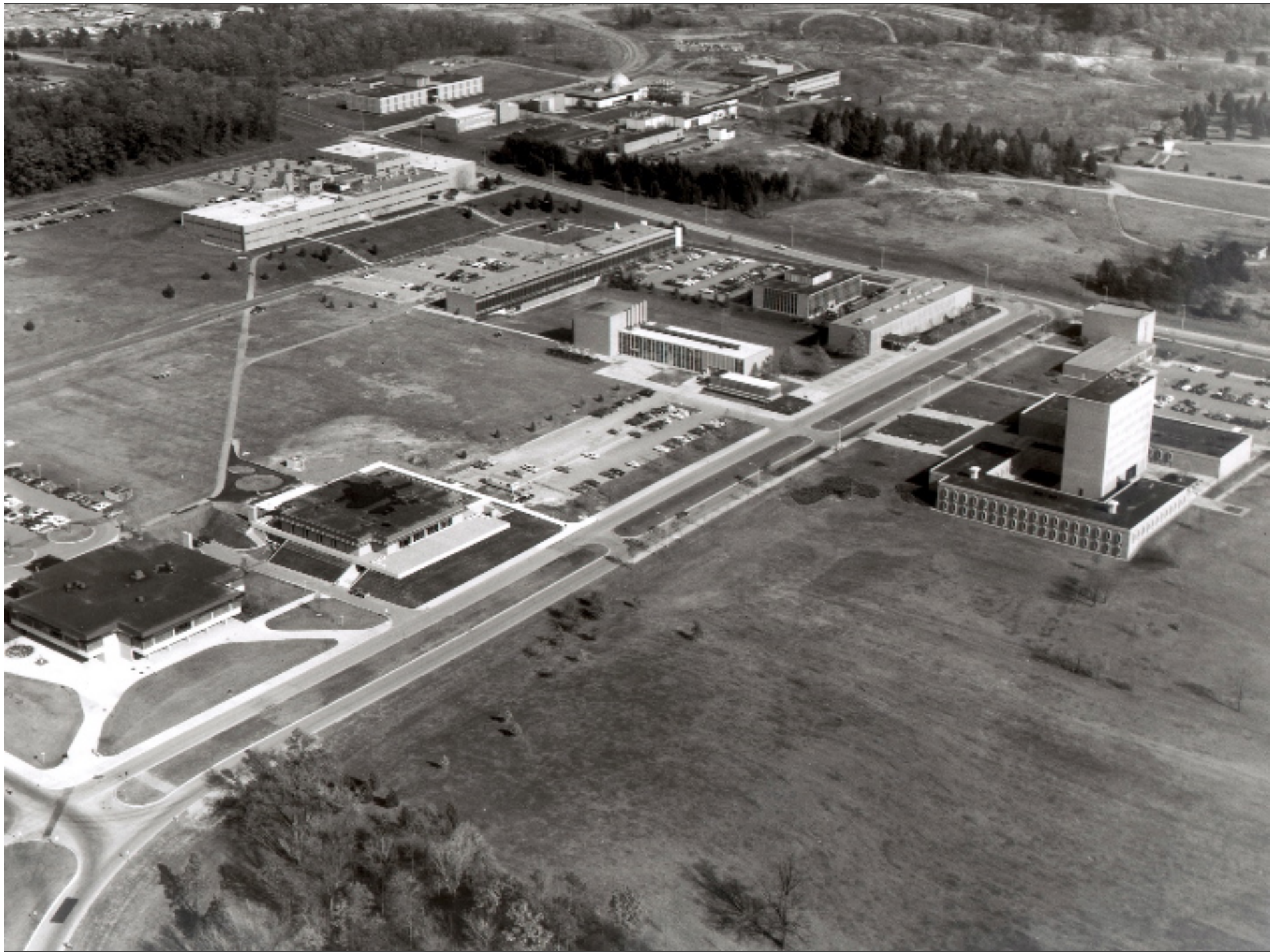
























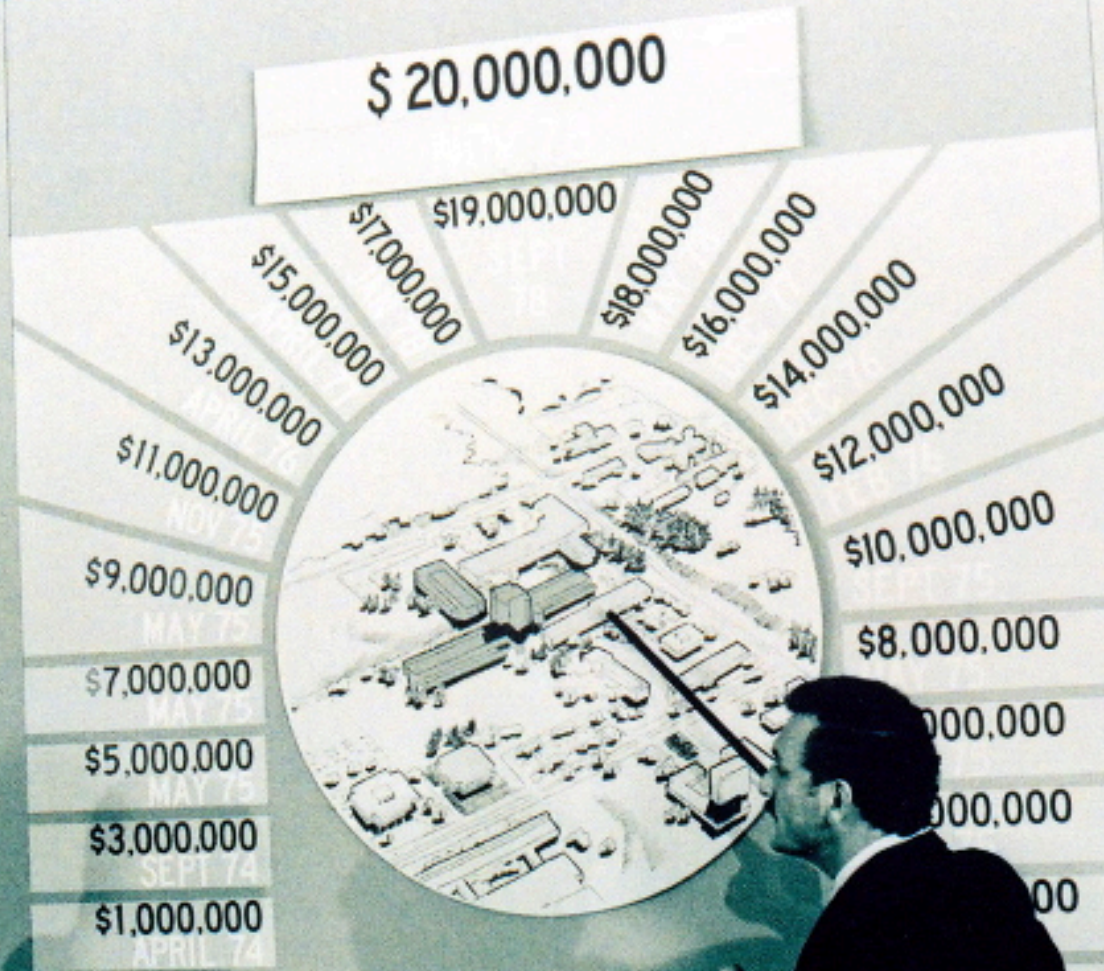


The 1970s

THE UNIVERSITY OF MICHIGAN
COLLEGE OF ENGINEERING
CAPITAL CAMPAIGN

1974-78

THE LARGEST EVER
CONDUCTED BY ANY
U-M SCHOOL COLLEGE



CA
NORTH
F







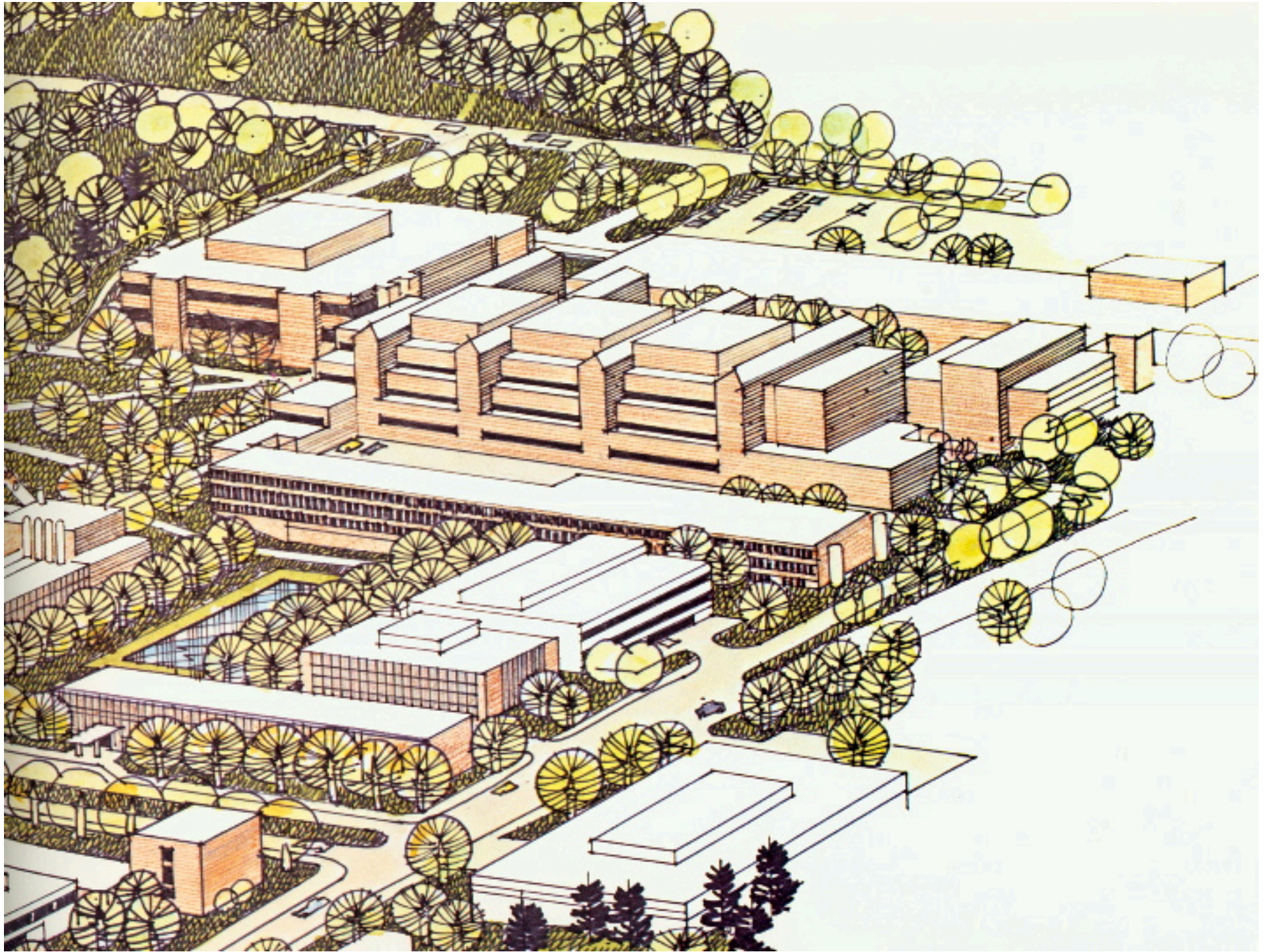


The 1980s









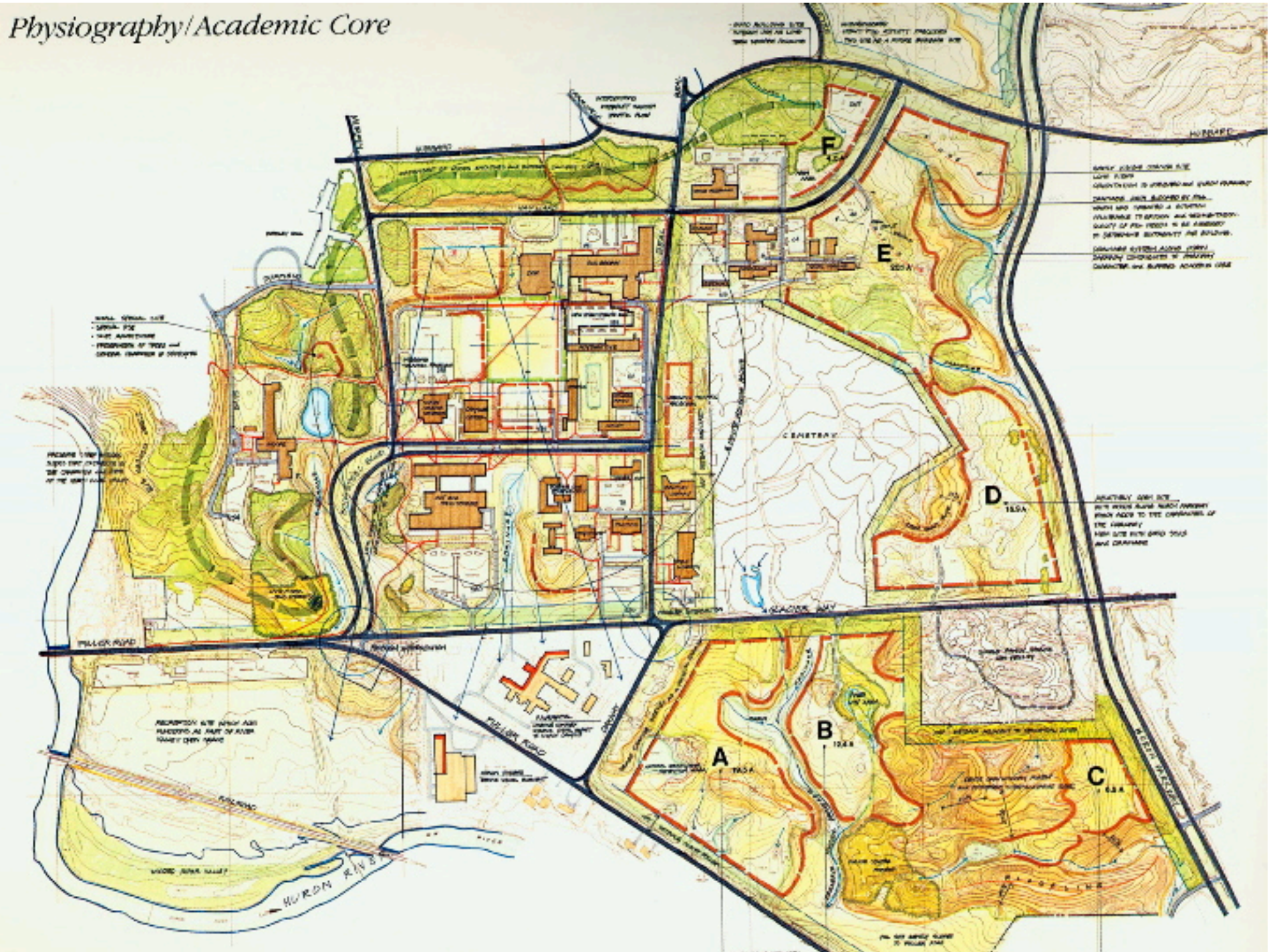




Physiography/Perimeter Land

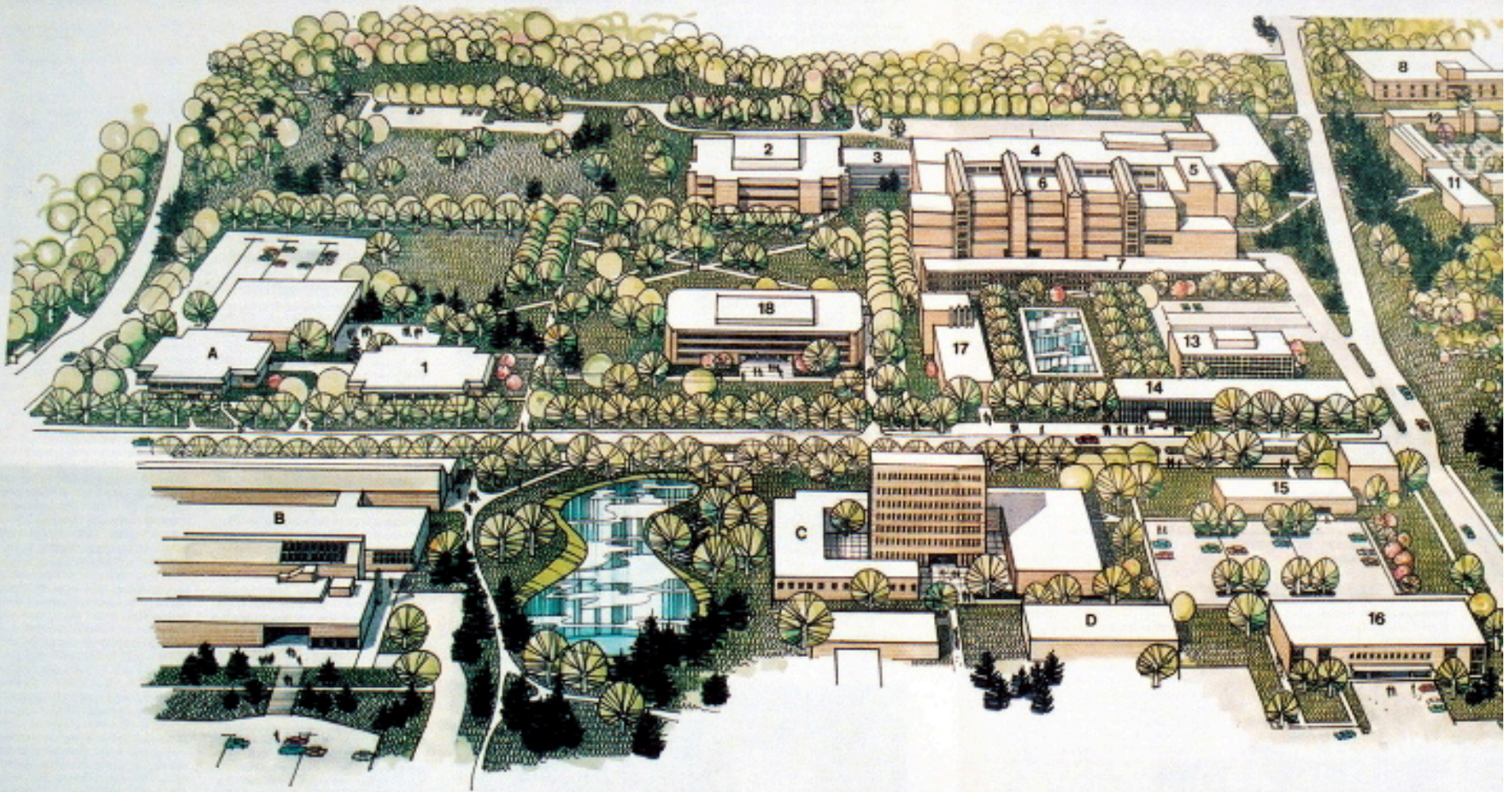


Physiography/Academic Core





The University of Michigan North Campus



COLLEGE OF ENGINEERING FACILITIES

- 1 Chrysler Center
- 2 Herbert H. Dow Building
- 3 Dow Connector (under construction)
- 4 George G. Brown Building
- 5 Engineering 1A Building
- 6 Electrical Engineering and Computer Science Building
- 7 Walter E. Lay Automotive Laboratory
- 8 Space Research Building
- 9 Naval Architecture and Marine Engineering Building
- 10 Aerospace Engineering Building
- 11 AEROSPACE CLASSROOMS AND RESEARCH LABORATORIES*
- 12 Research Activities Building
- 13 Industrial and Operations Engineering
- 14 Melvin E. Cooley Building
- 15 Technical Communications Building
- 16 Center for Research on Integrated Manufacturing Building
- 17 Phoenix Memorial Laboratory and Ford Reactor
- 18 NORTH CAMPUS LIBRARY*

(*In Planning)

FUNDING

FUNDING	YEAR
Gifts	1968
Gifts	1983
Gifts & Univ	—
Federal	1957 (1964 Addition)
State	1975
State	1986
State & Gifts	1995
Federal & Univ	1965 (1986 Addition)
Federal & Gifts	1977 (1978 Addition)
Federal & Univ	1995 (1992 Addition)
—	—
Federal	1963
Univ	1983 (Assigned to College)
State	1983
Univ	1983 (Assigned to College)
Univ	To be occupied in 1987
Gifts	1995
—	—

OTHER UM FACILITIES

- A North Campus Commons (addition under construction)
- B Art and Architecture Building
- C Institute of Science and Technology Buildings
- D Computing Center
- E Bentley Historical Library





















The 1990s







































The New Century



















MEDM UNION
Medicine and Health
1000 University Ave.
Durham, NC 27708

WINDMILL BROTHERS

SMU

SMU









The Media Union







Early concepts

- A North Campus library?
- The mother of all computer clusters?
- A “Media Lab” for Michigan
- A technology “playpen” for faculty and students
- An “intellectual commons” for North Campus
- A “creativity center” as the anchor of “the renaissance campus”
- A “laboratory” for the invention of the “university of the 21st Century”



The Political Concept

- ITIC
- The *Integrated*



The Political Concept

- ITIC
- The Integrated
- ...*Technology*



The Political Concept

- ITIC
- The Integrated
- ...Technology
-**Instructional**



The Political Concept

- ITIC
- The Integrated
- ...Technology
-Instructional
-Center



























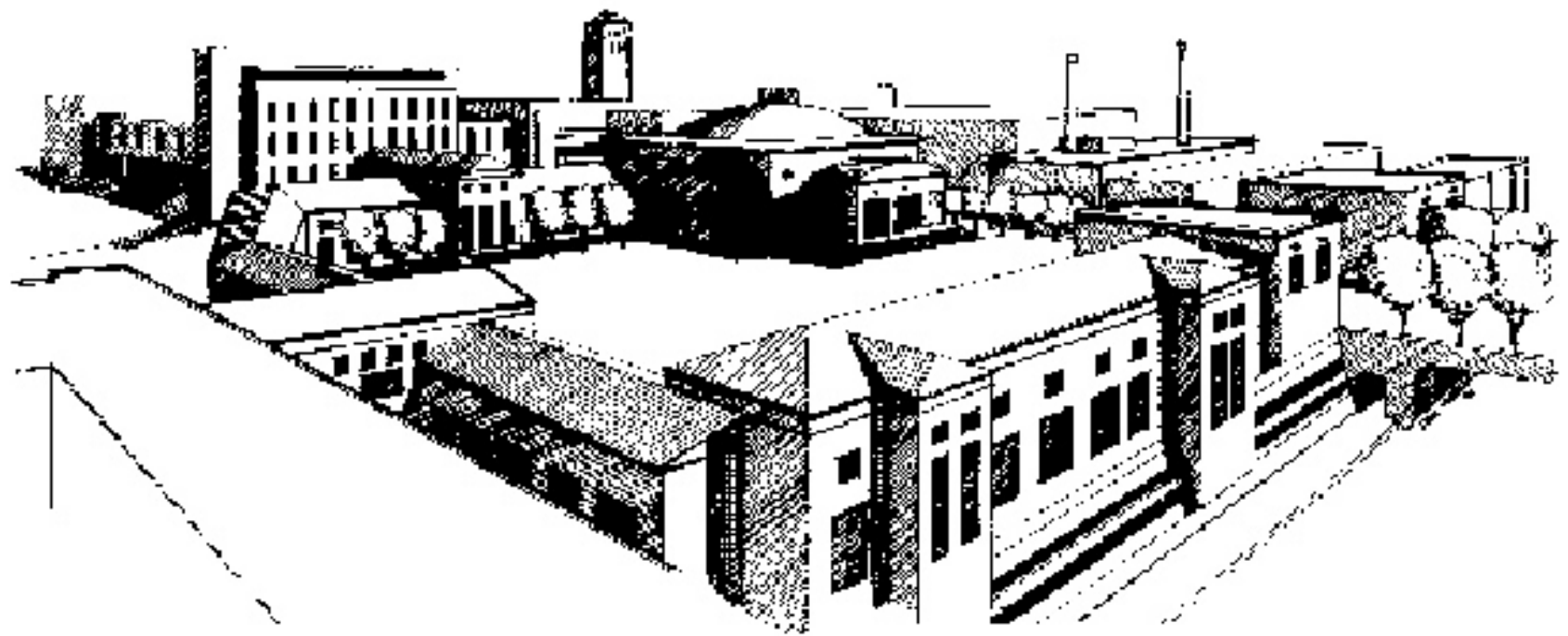


Other Observations

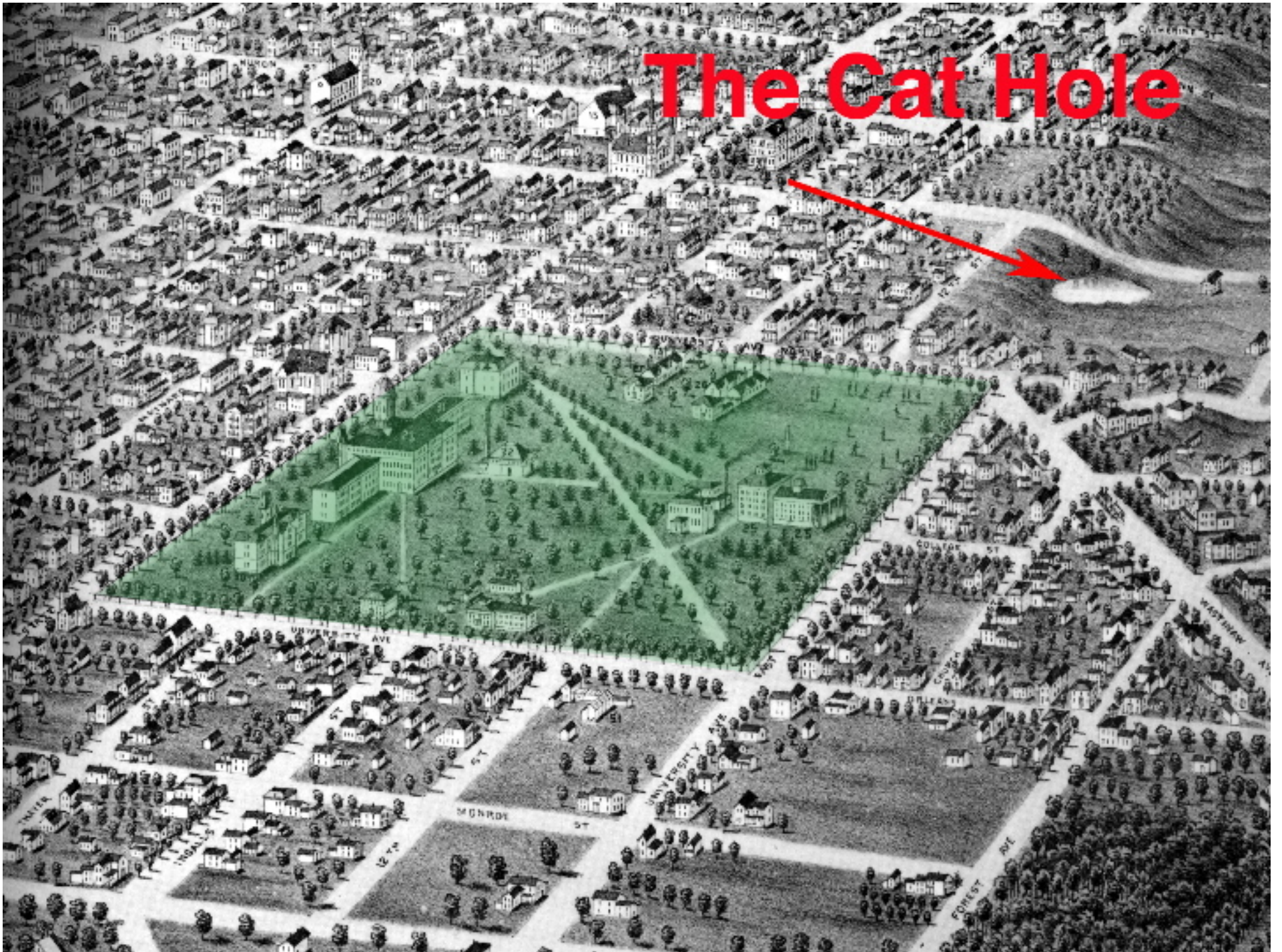
The Media Union was designed to serve primarily the North Campus (the “Gateway Campus” concept was developed for the Central Campus).

It was designed to be highly flexible space, capable of evolving with changing needs and technology.

The programmatic elements (aside from student services) were intended to be supported primarily from external funds (grants, endowment, etc.)







The Cat Hole



Other Observations

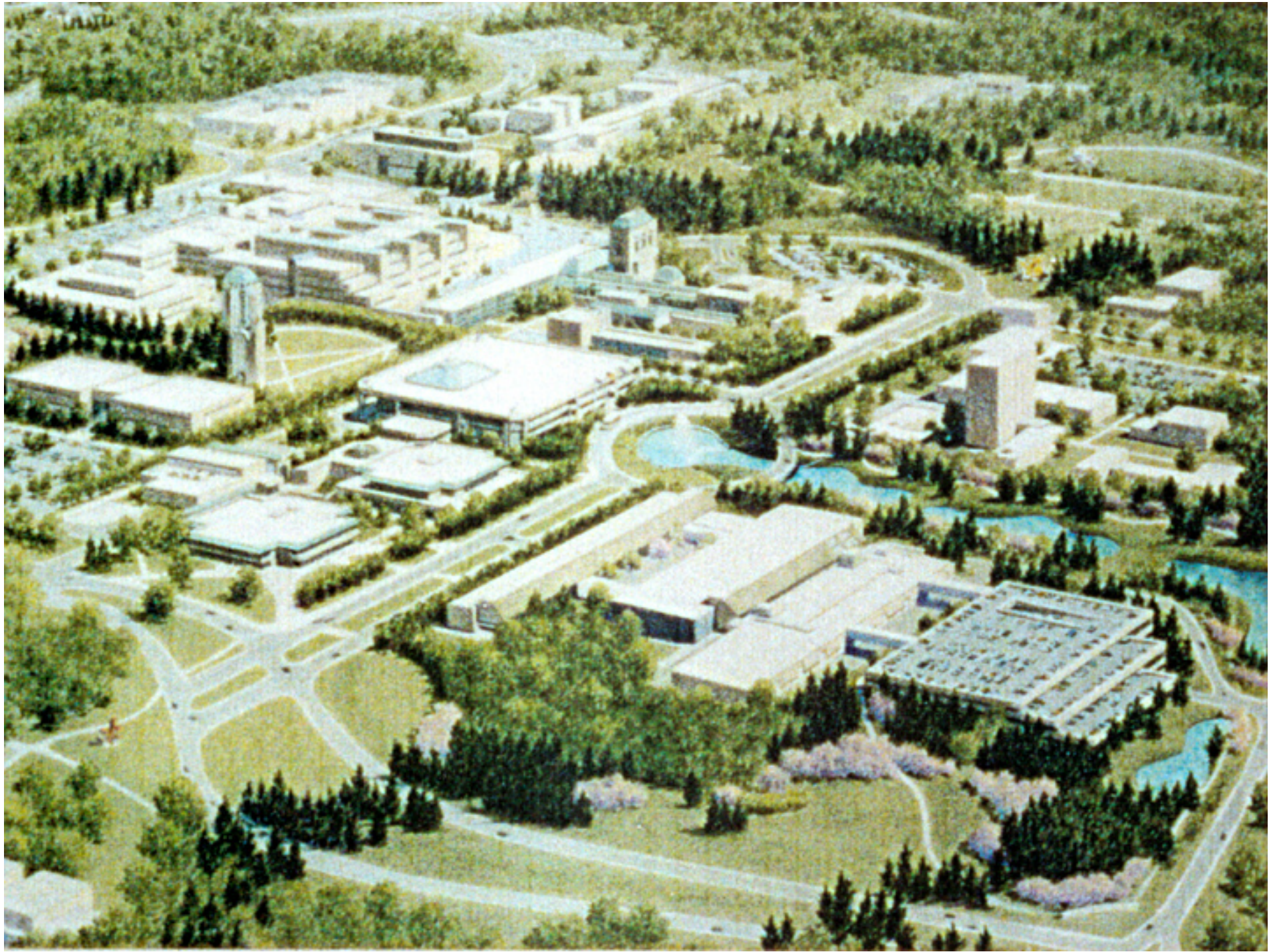
The Media Union was designed to serve primarily the North Campus (the “Gateway Campus” concept was developed for the Central Campus).

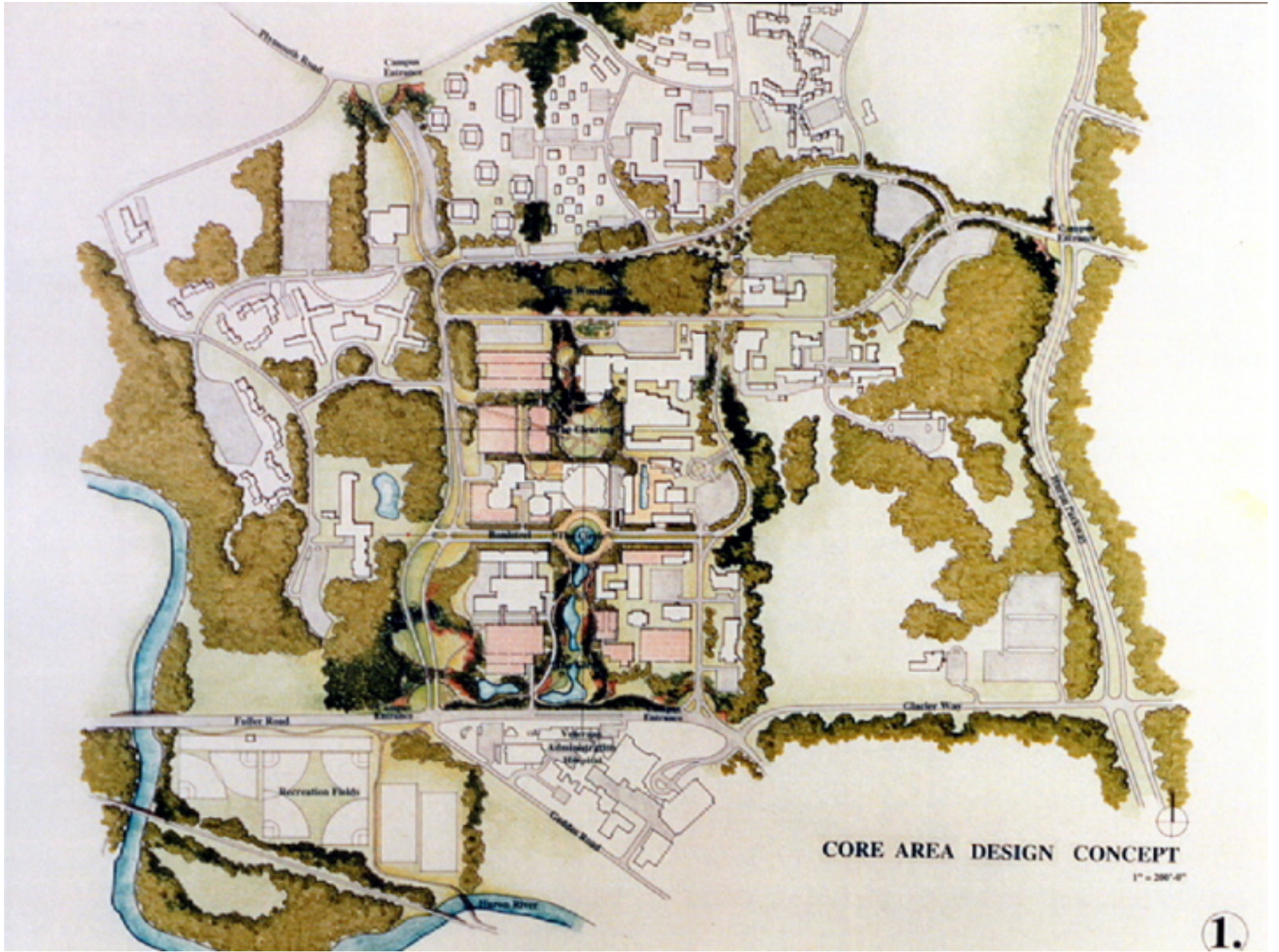
It was designed to be highly flexible space, capable of evolving with changing needs and technology.

The programmatic elements (aside from student services) were intended to be supported primarily from external funds (grants, endowment, etc.)



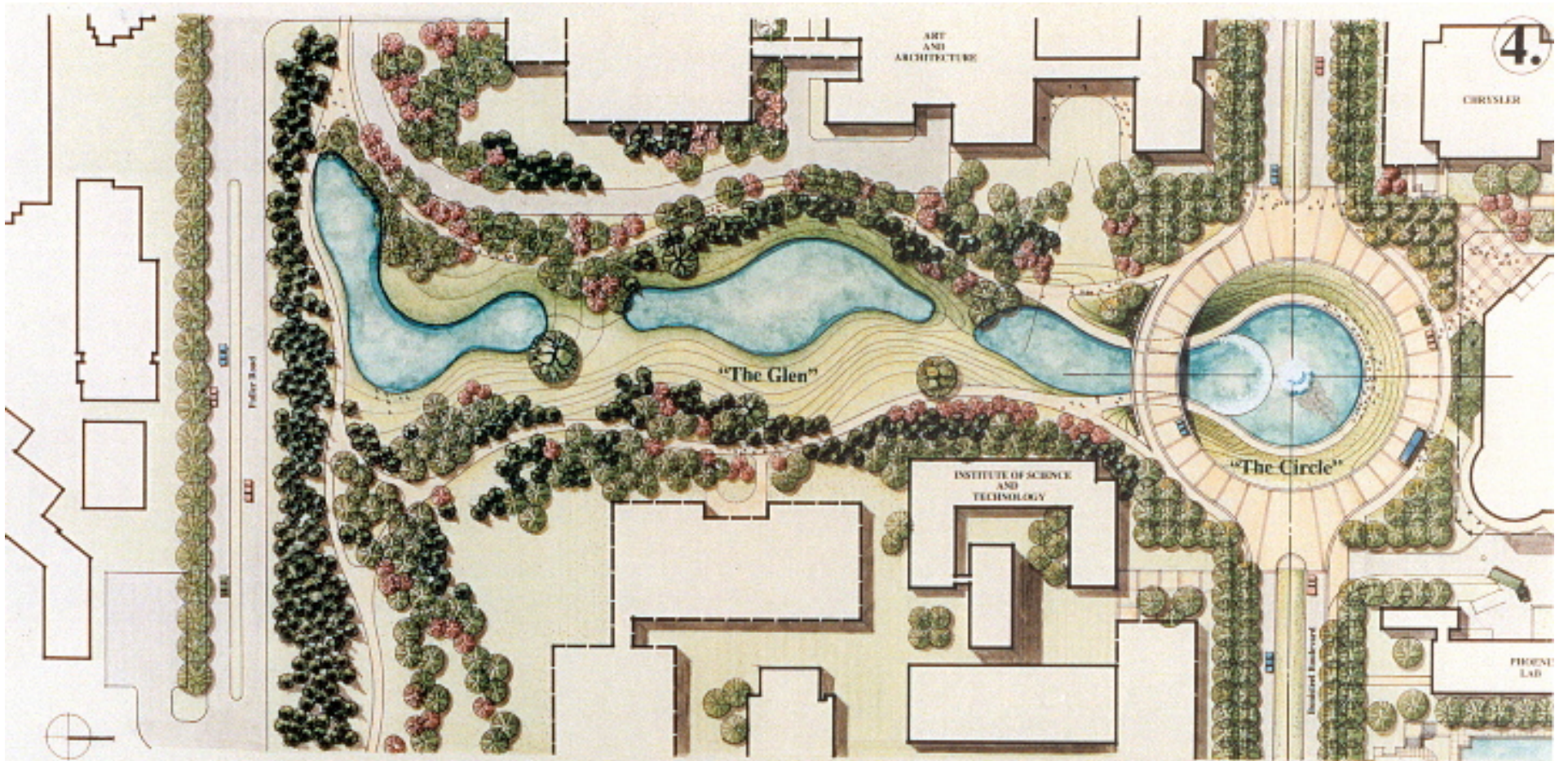
The “North Woods” Plan



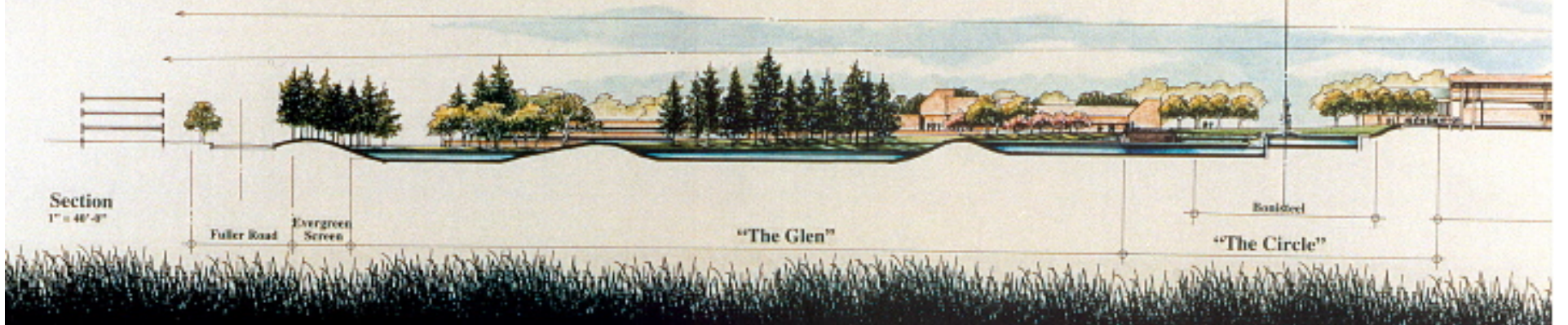


CORE AREA DESIGN CONCEPT

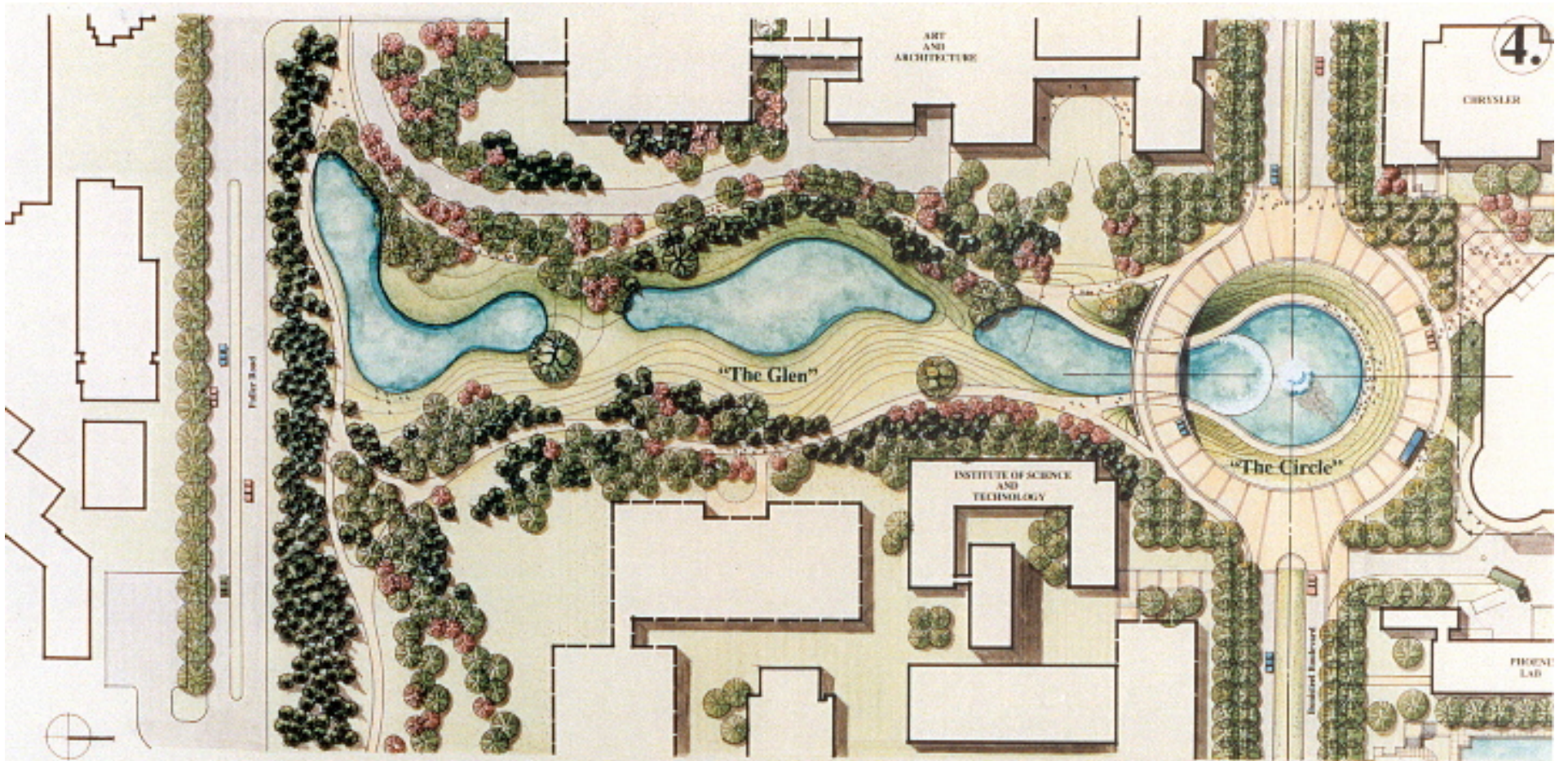
1" = 200'-0"



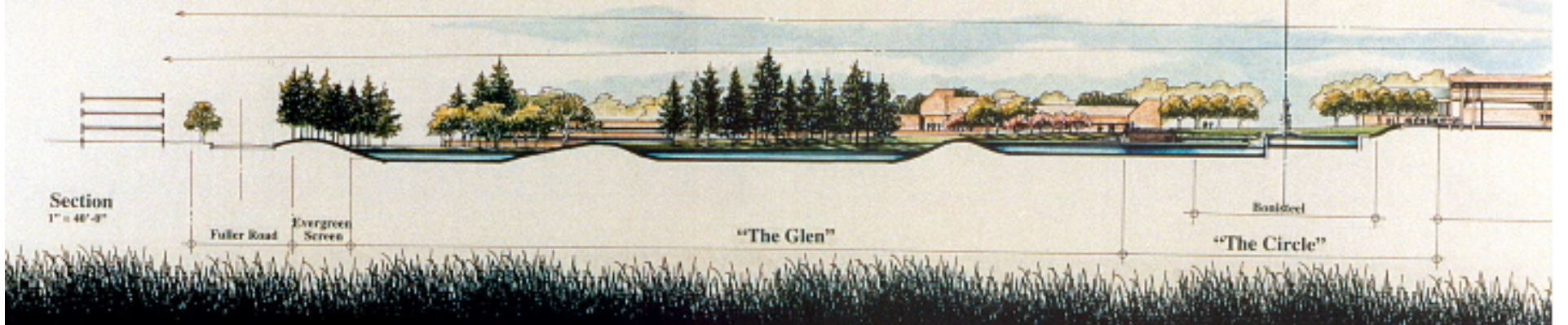
Plan
1" = 40'-0"



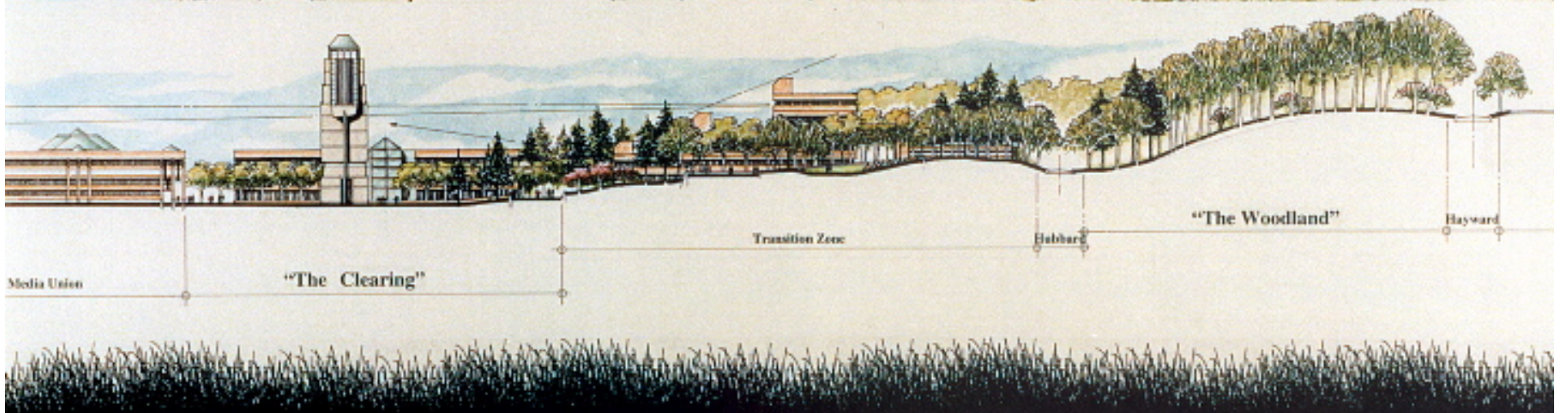
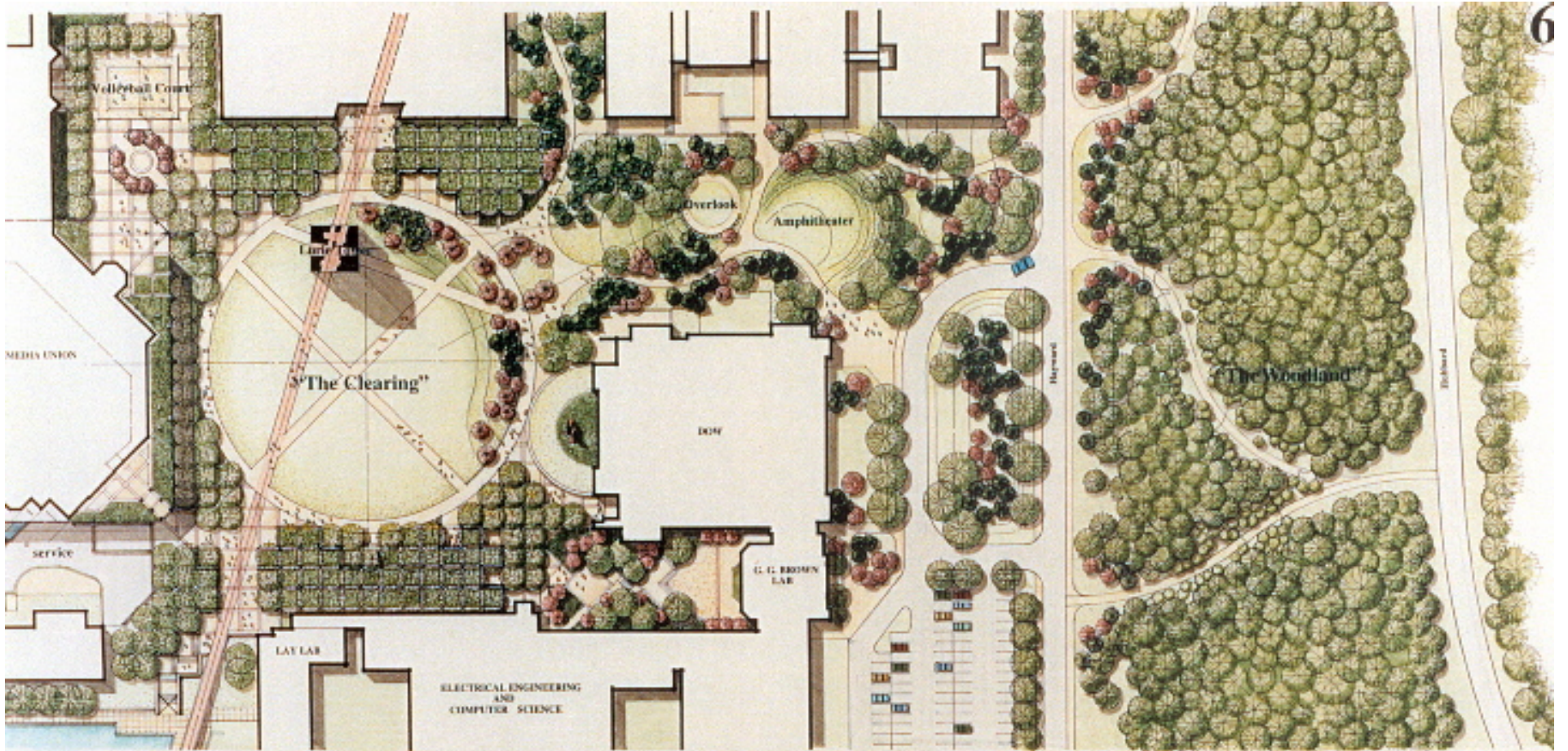
Section
1" = 40'-0"

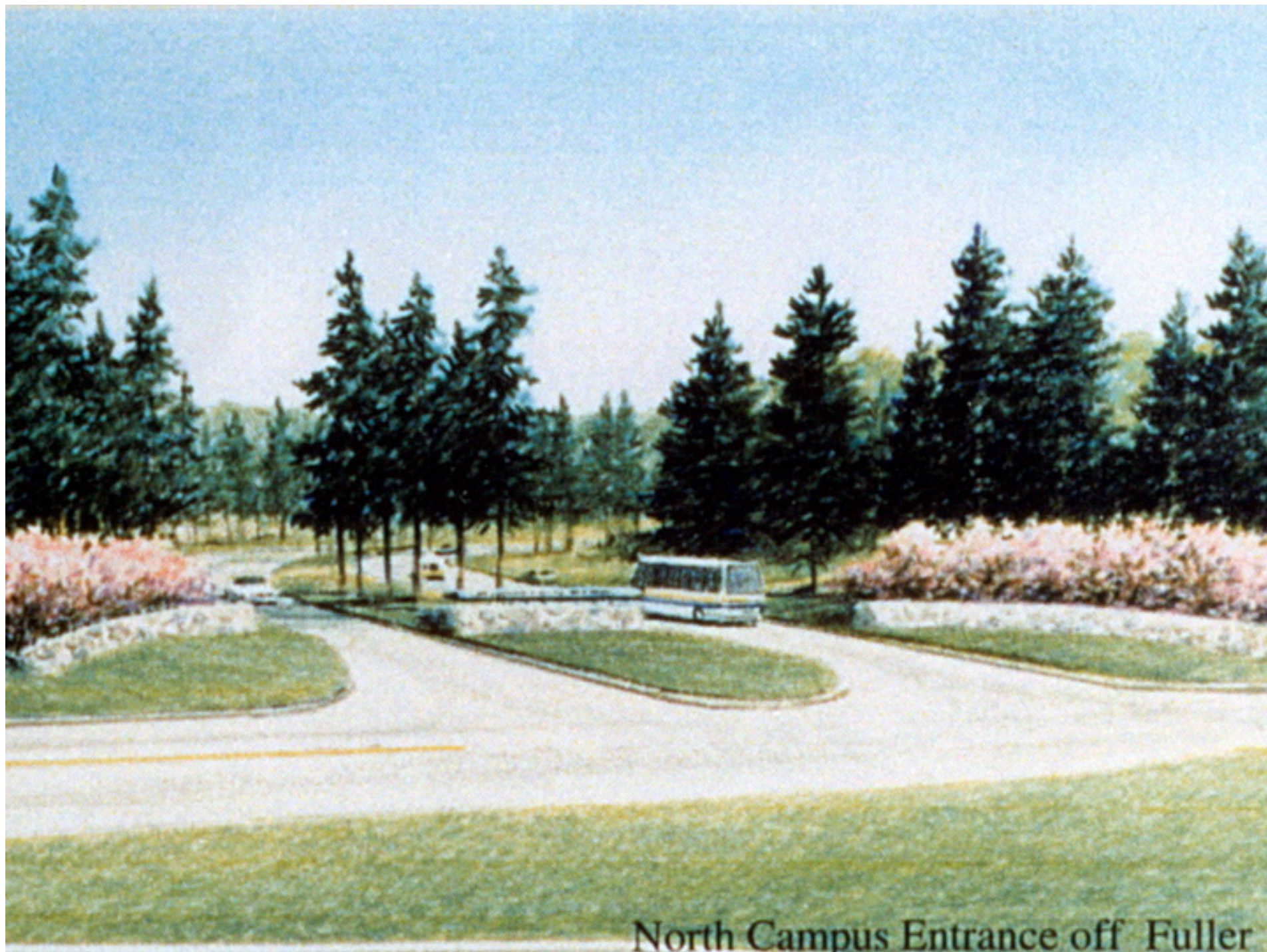


Plan
1" = 40'-0"

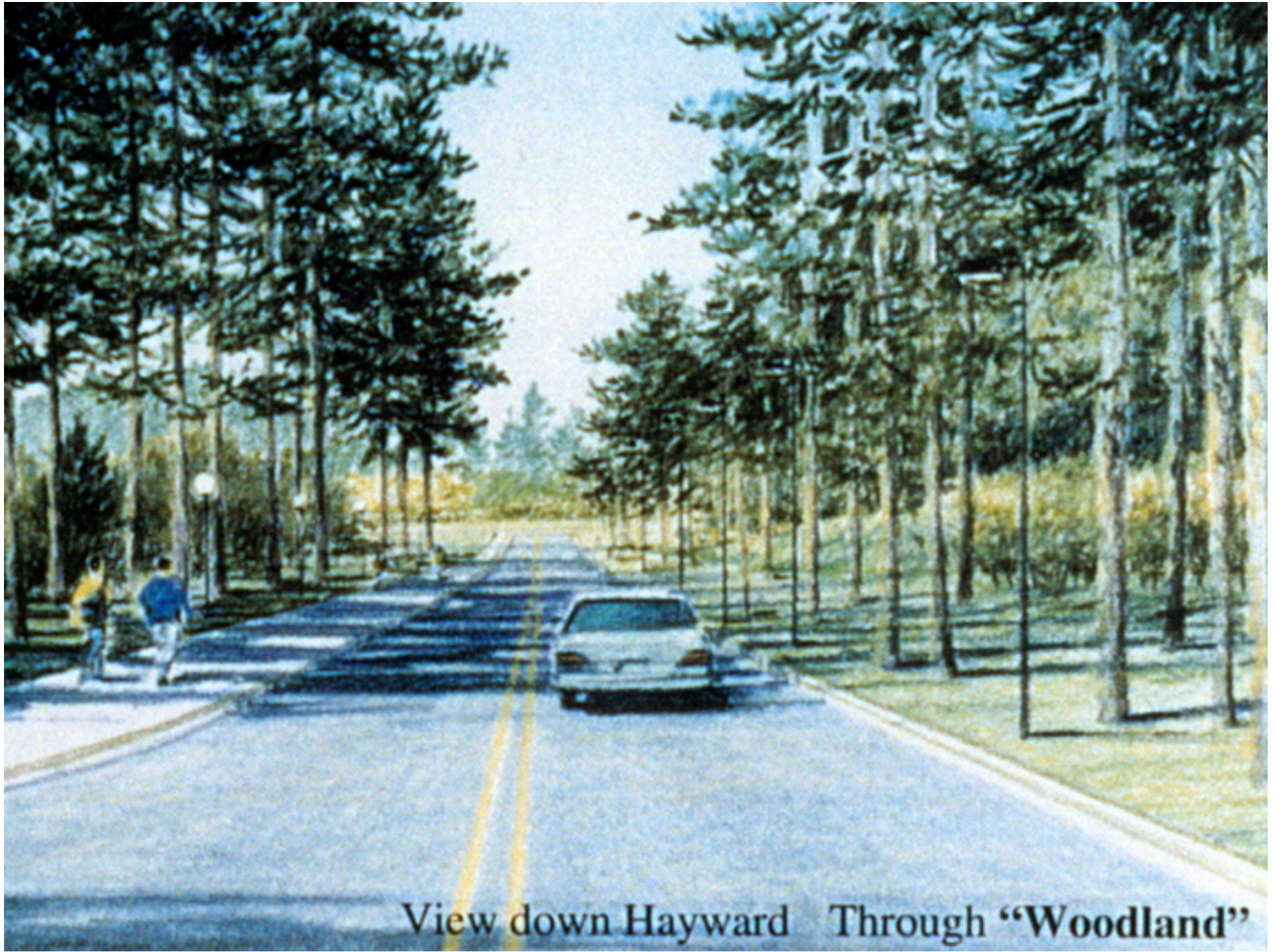


Section
1" = 40'-0"





North Campus Entrance off Fuller



View down Hayward Through "Woodland"



View into "The Clearing" from under bosque

