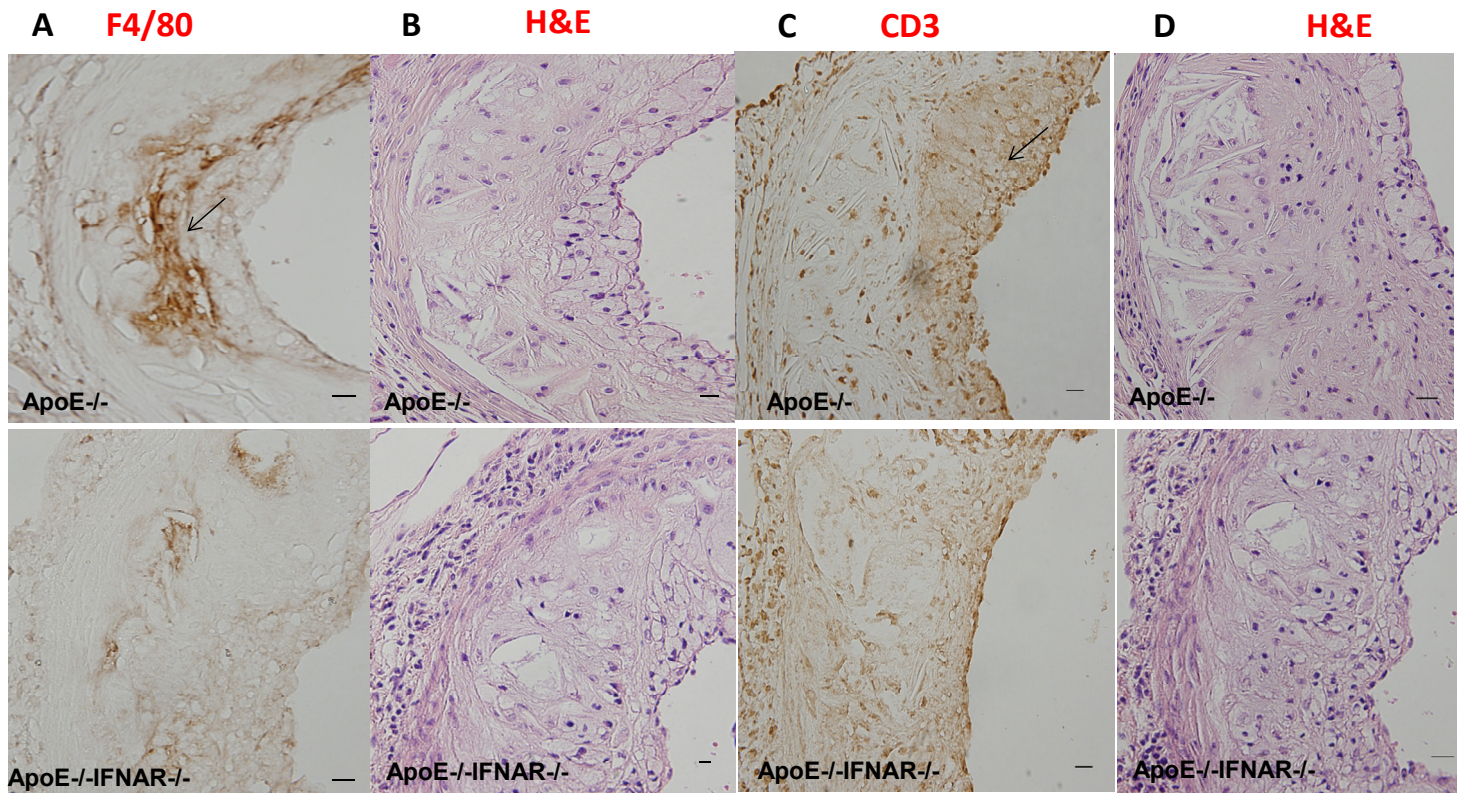


Supplementary Figure 1. Mice lacking type I IFN receptor display increases in bone marrow EPCs. Representative dot plots of bone marrow cells from 30 week female NZM and INZM mice. EPCs were quantified as lineage-negative CD309+CD34+ cells or lineage-negative CD117+Sca1+ cells. Quadrant gates were established using the appropriate isotype controls. Numbers represent % of cells in each quadrant and right upper quadrant (Q2) percentages are indicative of bone marrow EPCs.



Supplementary Figure 2. MØ and T cell vascular infiltration are sensitive to perturbations in type I IFN signaling in ApoE^{-/-} mice (A and C) Representative images of aortic valves of ApoE^{-/-} and ApoE^{-/-}IFNAR^{-/-} mice stained with anti-murine MØ F4/80 mAb (A) or anti-murine CD3 mAb (C). Arrows point at cells staining for Abs. (B and D) Representative images of aortic valves of ApoE^{-/-}IFNAR^{-/-} and ApoE^{-/-} mice stained with H&E, matching the IHC staining for F4/80 (A) and for CD3 (C), respectively. Scale: 400 µm; magnification is 40X.

Supplementary Table I.
Summary of Clinical and Demographic Characteristics of Mice Studied.

Strain	Gender	Age Weeks	Atherosclerosis	Thrombosis	Platelet activation	EPCs number/ function	EC function	In Vivo Angiogenesis	Urine Protein
NZM	F	20	N.D.	N.D.	N.D.				Trace+
INZM	F	20	N.D.	N.D.	N.D.	↑/↑	↑	↑	Trace+
NZM	F	30	N.D.	.					++-+++
INZM	F	30	N.D.	No change	↓	↑/↑	↑	↑	Trace+
NZM	M	30	N.D.	N.D.	N.D.				Trace+
INZM	M	30	N.D.	N.D.	N.D.	No Change	↑	↑	Trace+
NZM	M	40	N.D.						Trace+
INZM	M	40	N.D.	No change	↓	↑/↑	↑	↑	Trace+
NZM + AdControl	F	14	N.D.					N.D.	Trace
NZM + AdIFN α	F	14	N.D.	↑	↑	No change/ ↓	↓	N.D.	++++
NZM + AdControl	M	14	N.D.	N.D.	N.D.			N.D.	Trace+
NZM + AdIFN α	M	14	N.D.	N.D.	N.D.	No Change	↓	N.D.	Trace+
BALB/c + AdControl	M	14	N.D.	N.D.				N.D.	-
BALB/c + AdIFN α	F	14	N.D.	N.D.	↑	No Change/ ↓	↓	N.D.	-
ApoE ^{-/-}	M & F	18-22				N.D.	N.D.		N.D.
ApoE ^{-/-} IFNAR ^{-/-}	M & F	18-22	↓	No change	↓	N.D.	N.D.	↑	N.D.
ApoE ^{-/-} + AdControl	M & F	18-20				N.D.	N.D.	N.D.	N.D.
ApoE ^{-/-} + AdIFN α	M & F	18-20	↑	↑	↑	N.D.	N.D.	N.D.	N.D.

Values on INZM are compared to NZM mice; values on ApoE^{-/-} IFNAR^{-/-} are compared to ApoE^{-/-}; values on AdIFN α -injected mice are compared to AdControl-injected mice. F: female; M: male; N.D.: Not determined; EPCs: endothelial progenitor cells; Ad: adenovirus.