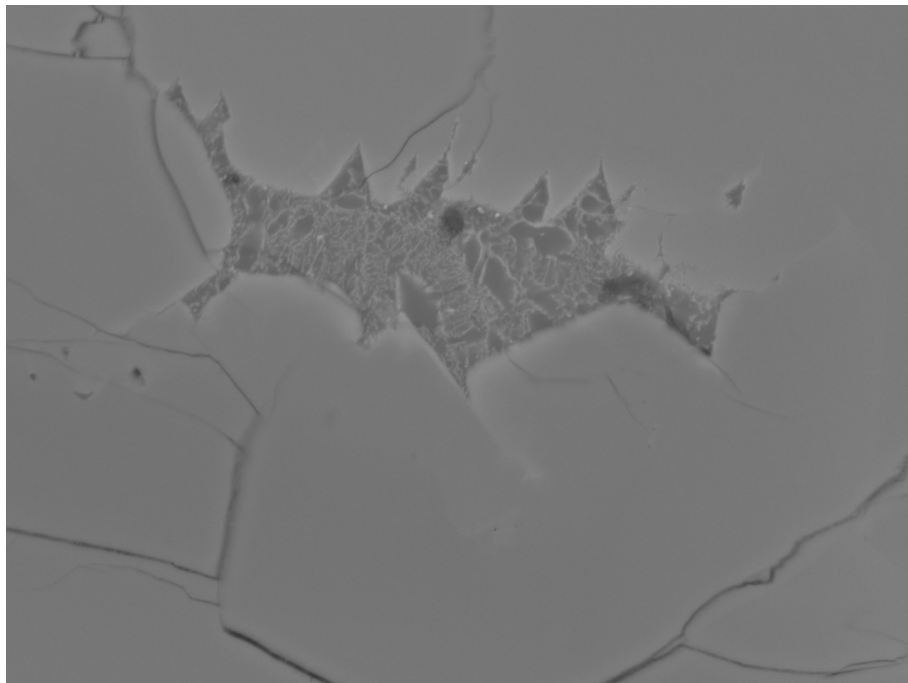
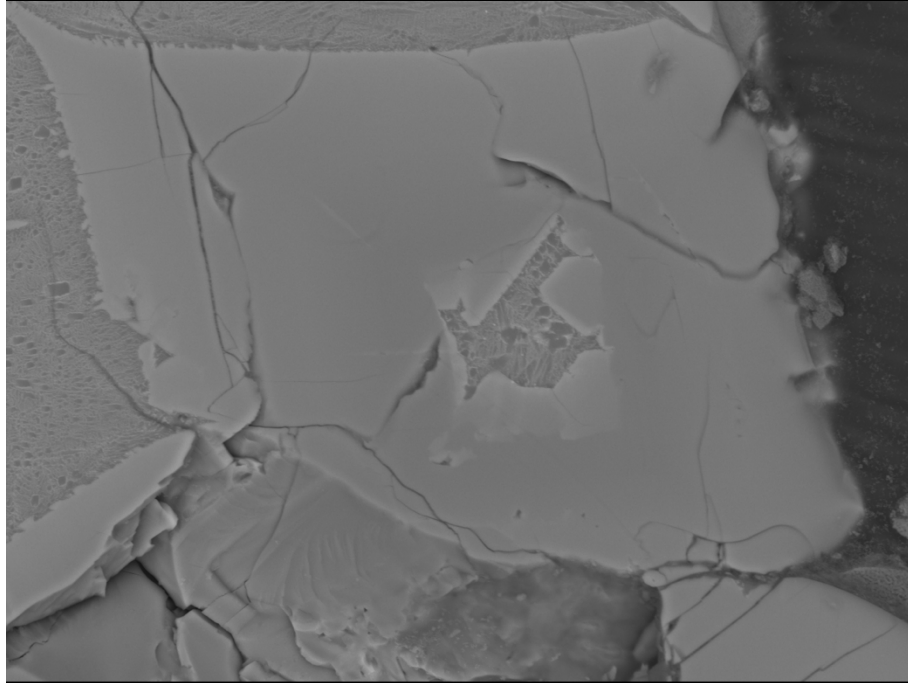


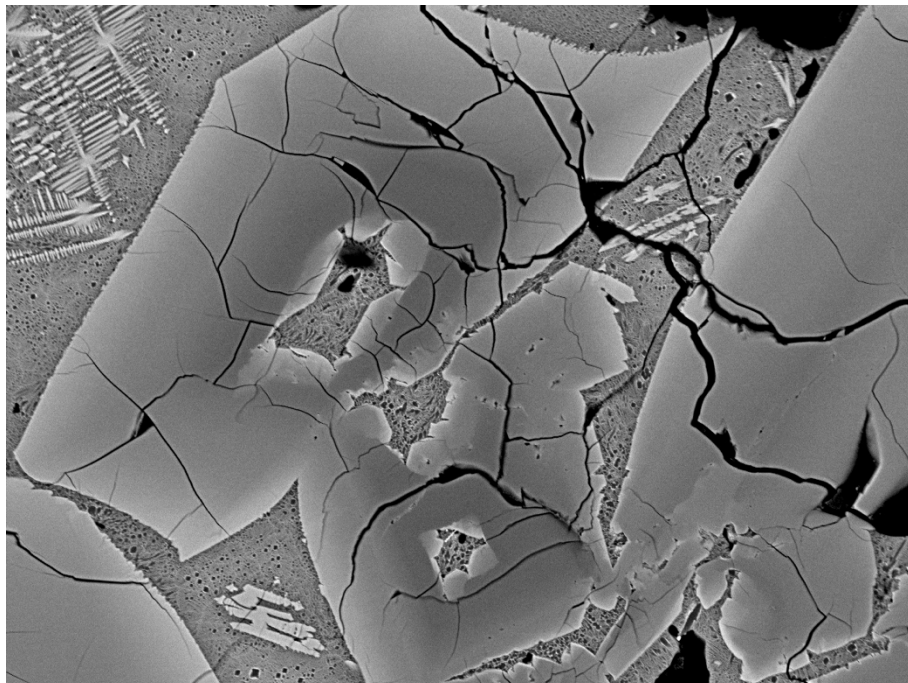
Figure 1. Additional backscattered electron images of lunar sample 15597 basalts showing the groundmass texture and pyroxene phenocrysts.



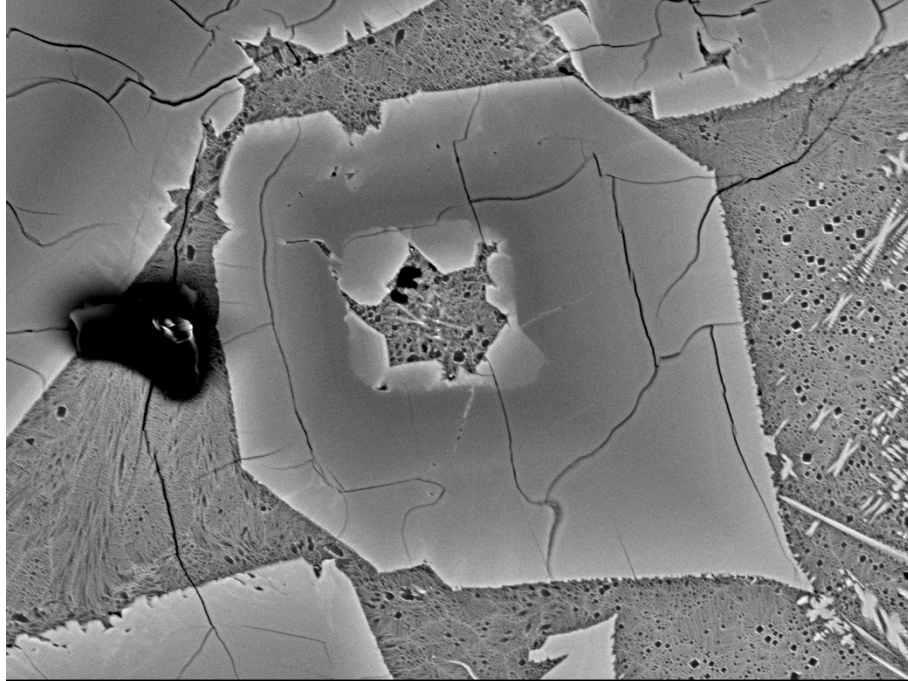
x1,700 20.0kV BED-C SEM 10µm UM-EMAL 2020-07-13 WD 8mm 17:14:10



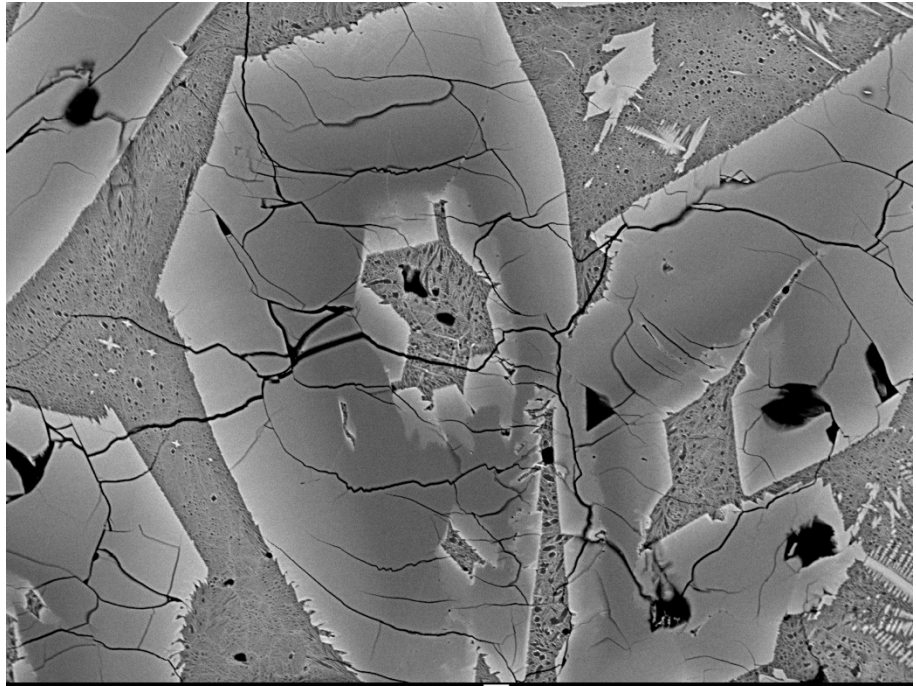
x850 20.0kV BED-C SEM 10µm UM-EMAL 2020-07-13 WD 8mm 17:21:49



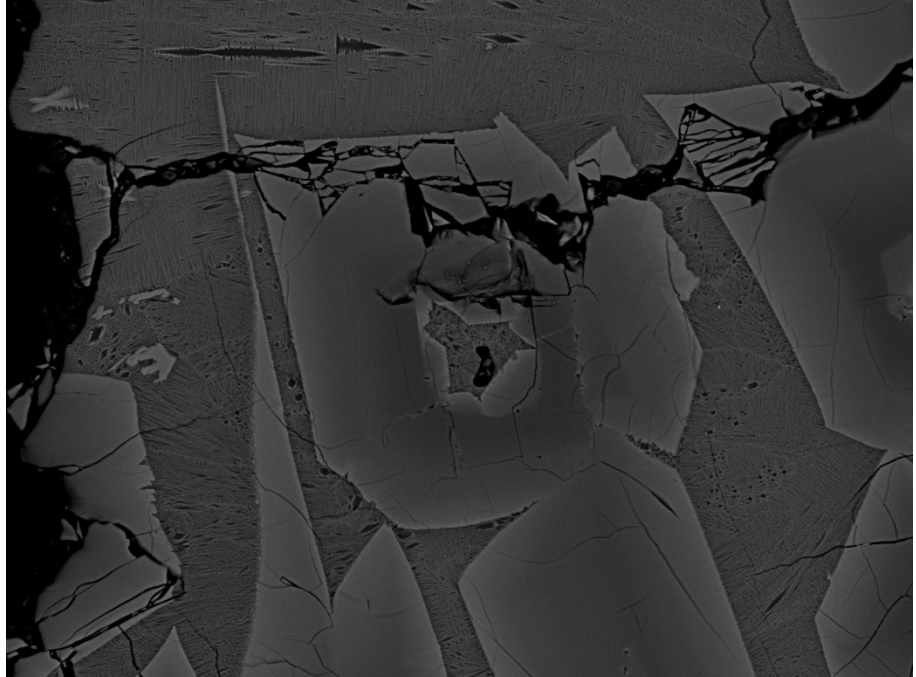
x350 20.0kV BED-C SEM 10µm UM-EMAL 2020-07-22 WD 8mm 16:15:04



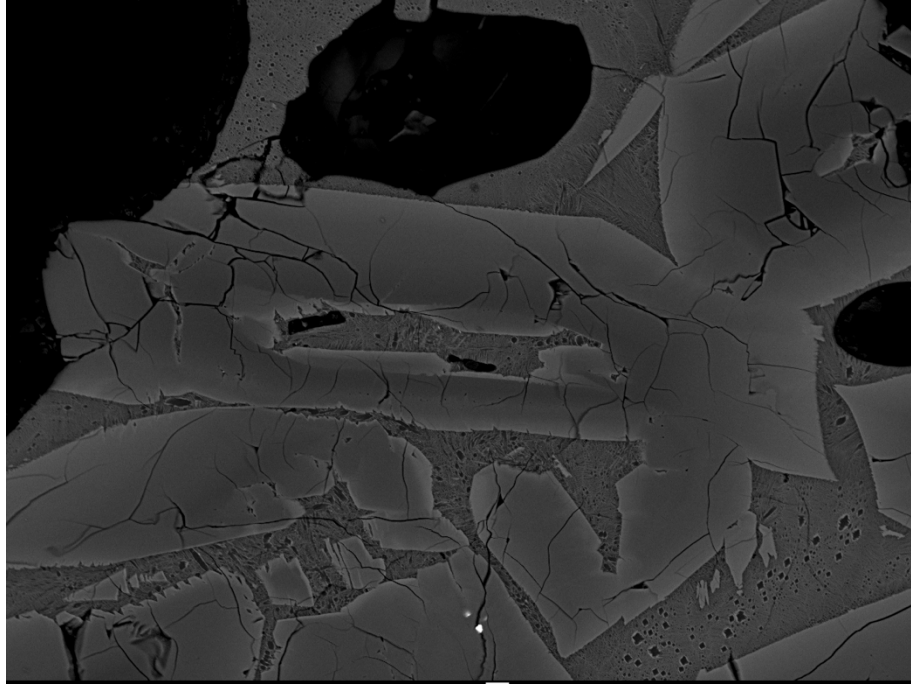
x550 20.0kV BED-C SEM 10µm UM-EMAL 2020-07-22 WD 8mm 16:17:58



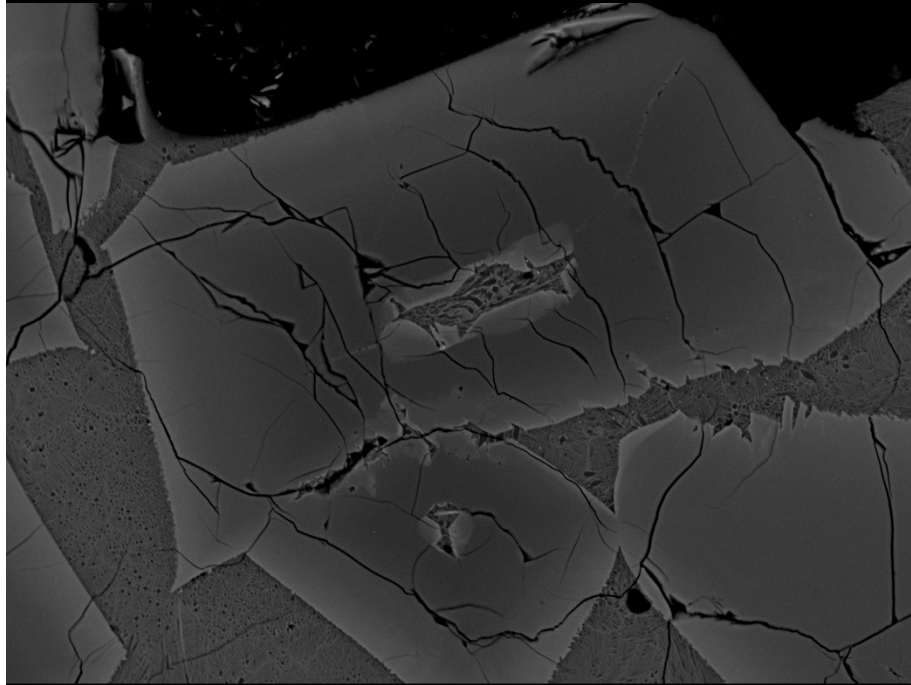
x330 20.0kV BED-C SEM 10µm UM-EMAL 2020-07-22
WD 8mm 16:19:31



x400 20.0kV BED-C SEM 10µm UM-EMAL 2020-08-03
WD 8mm 15:30:19



x300 20.0kV BED-C SEM 10µm UM-EMAL 2020-08-03
WD 8mm 16:03:42



x430 20.0kV BED-C SEM 10µm UM-EMAL 2020-08-03
WD 8mm 16:08:23

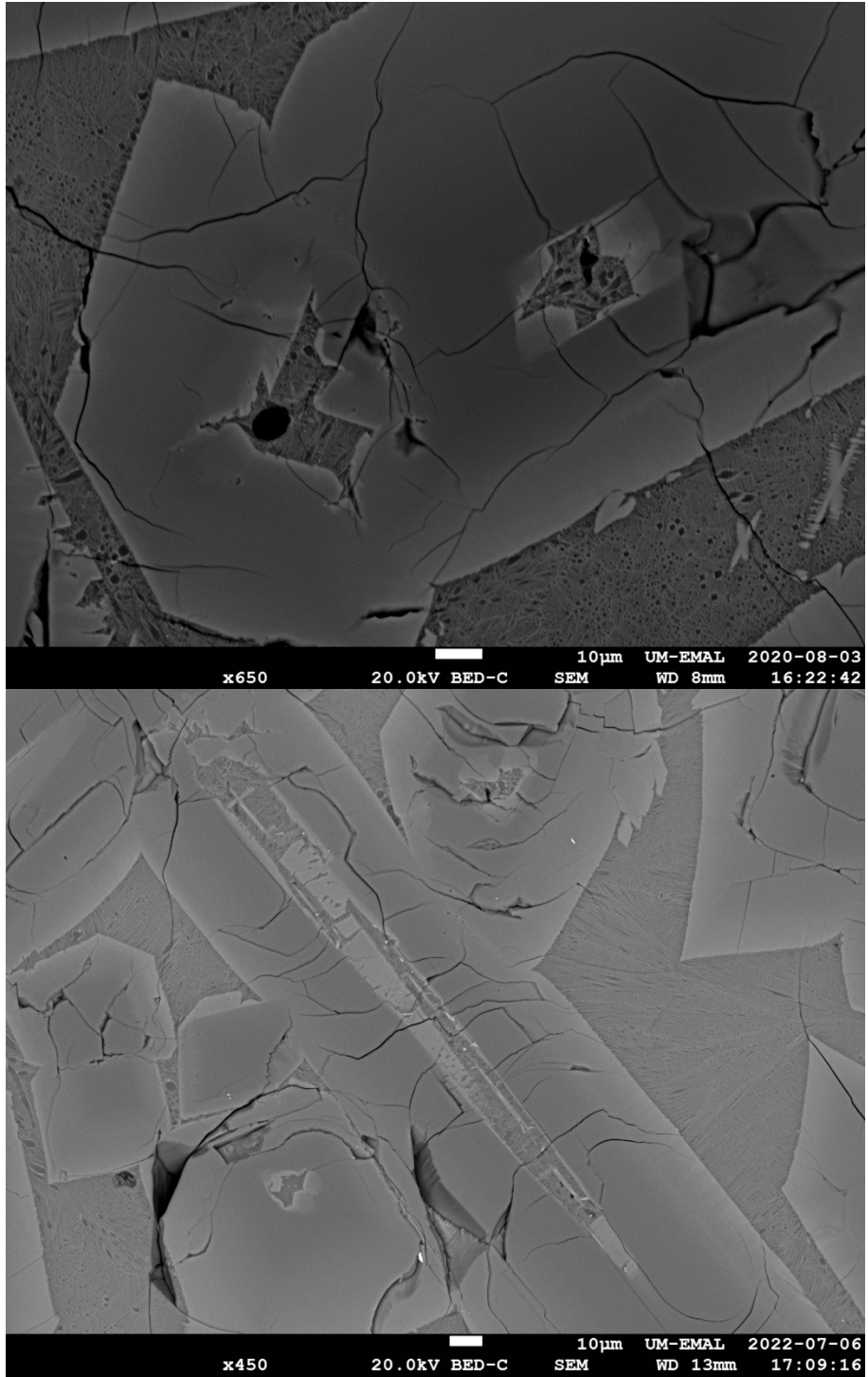
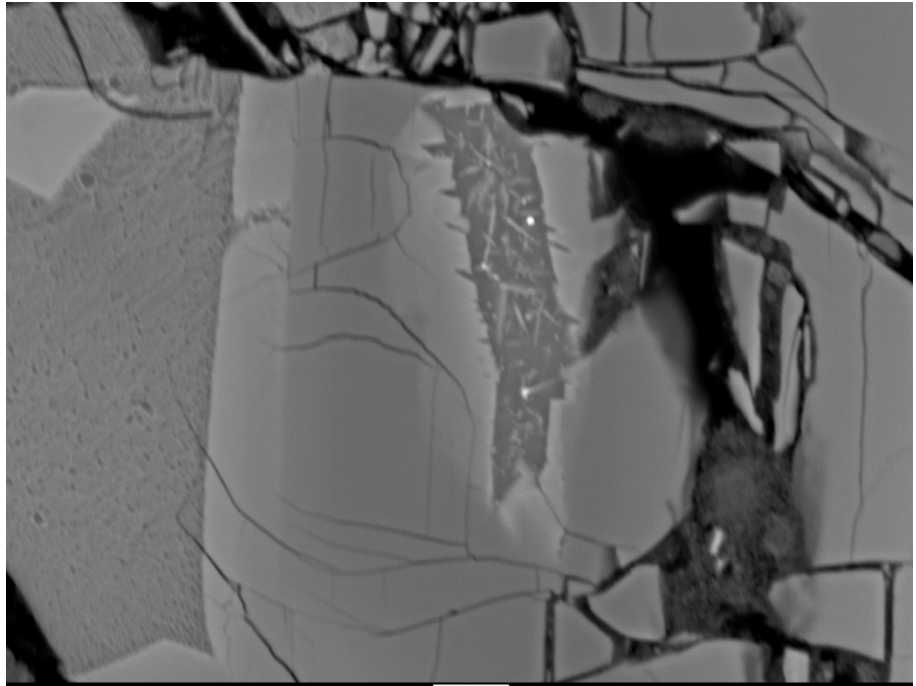
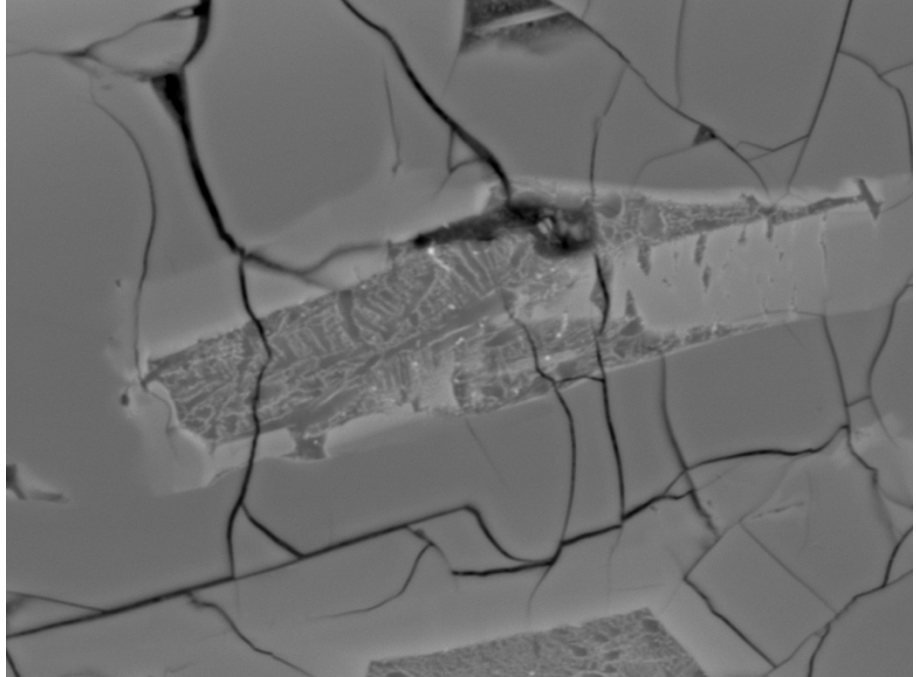


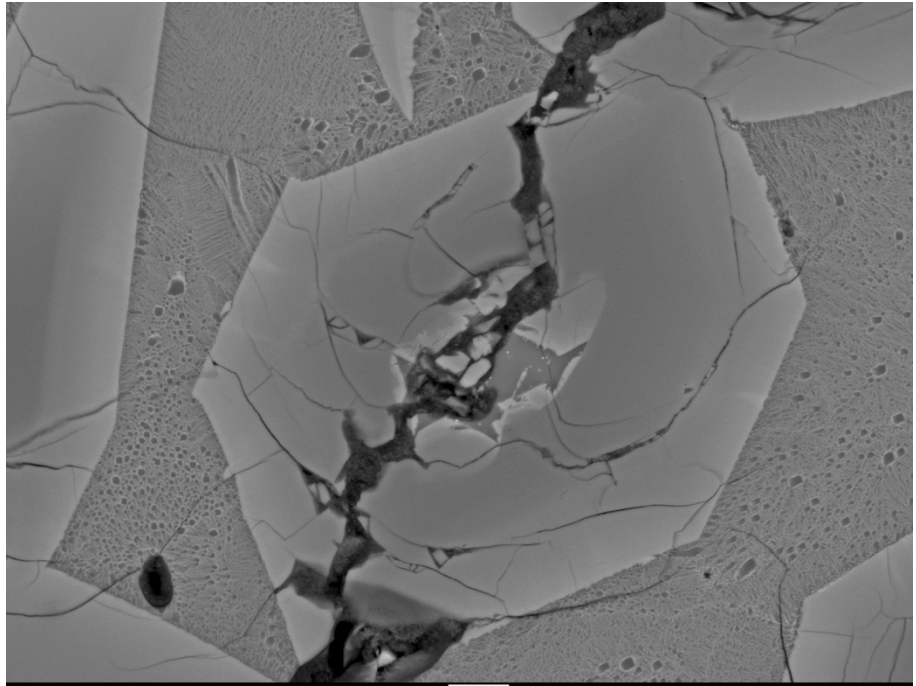
Figure 2. Additional backscattered electron images of 15597 pyroxene-hosted melt inclusions that are crystalline.



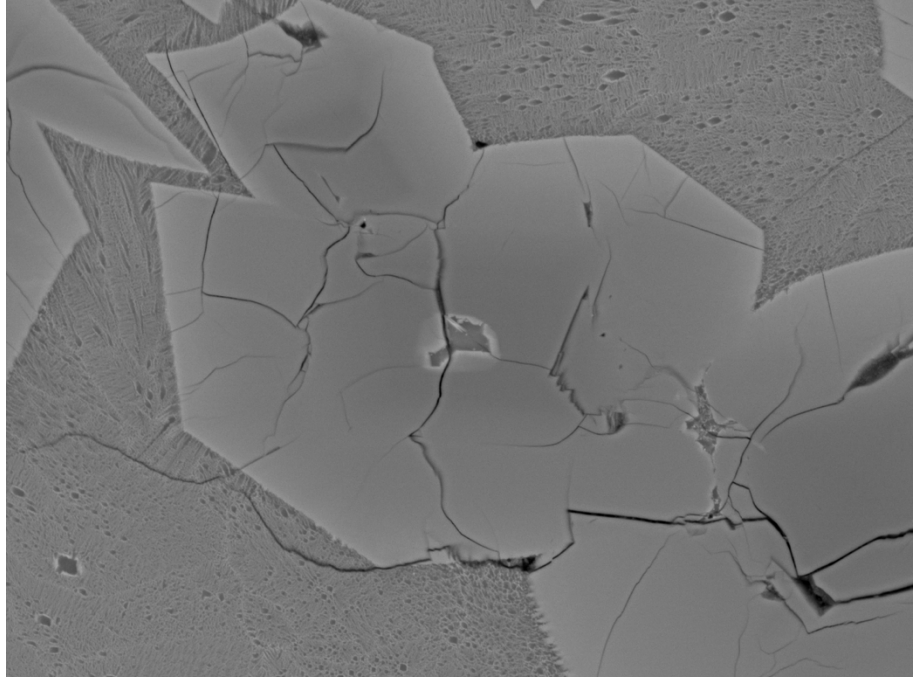
x1,000 20.0kV BED-C SEM 10µm UM-EMAL 2020-07-28 WD 8mm 17:13:16



x1,600 20.0kV BED-C SEM 10µm UM-EMAL 2020-07-28 WD 8mm 17:15:48



10µm UM-EMAL 2020-07-28
x800 20.0kV BED-C SEM WD 8mm 17:22:49



10µm UM-EMAL 2020-07-28
x700 20.0kV BED-C SEM WD 8mm 17:28:30

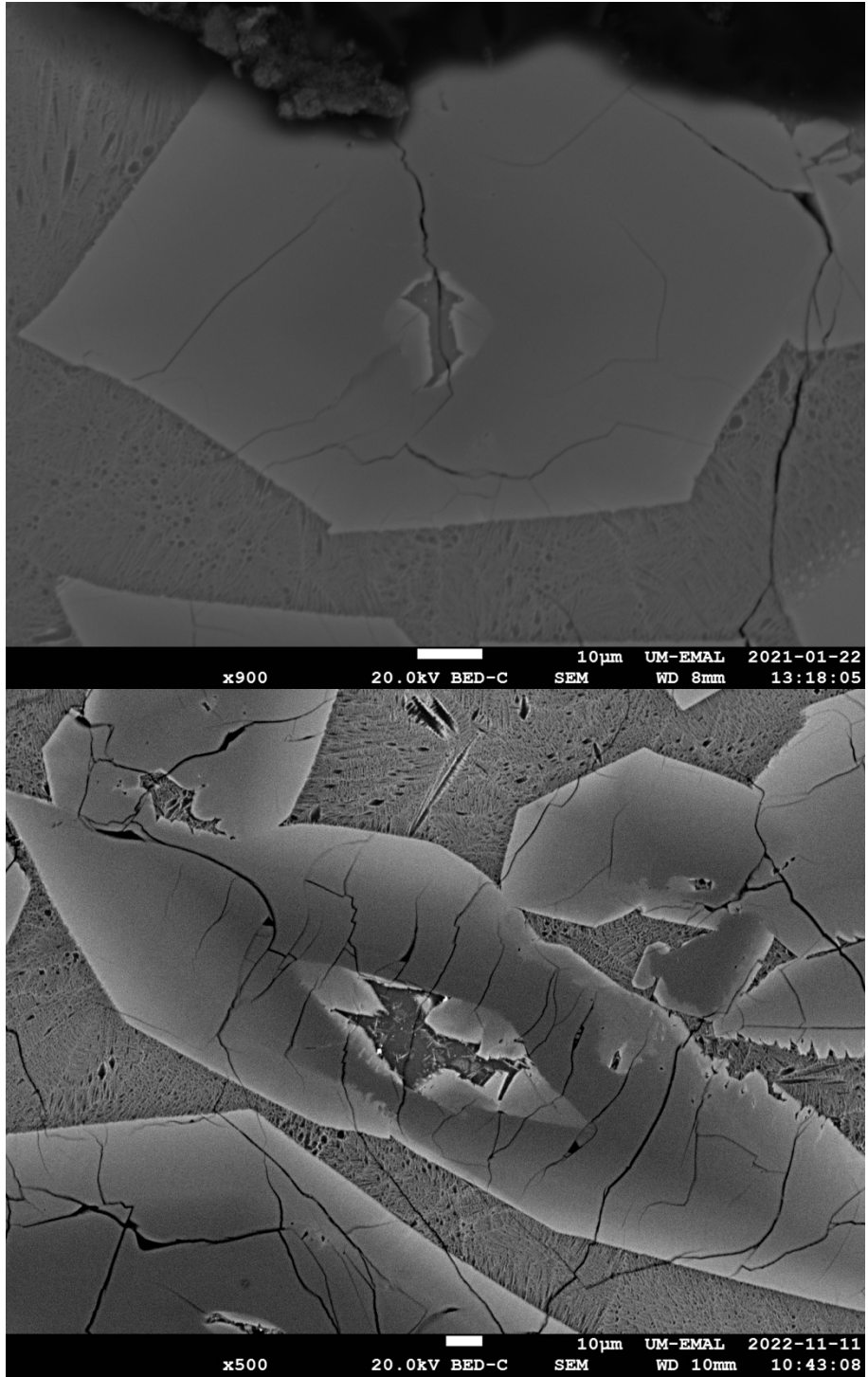
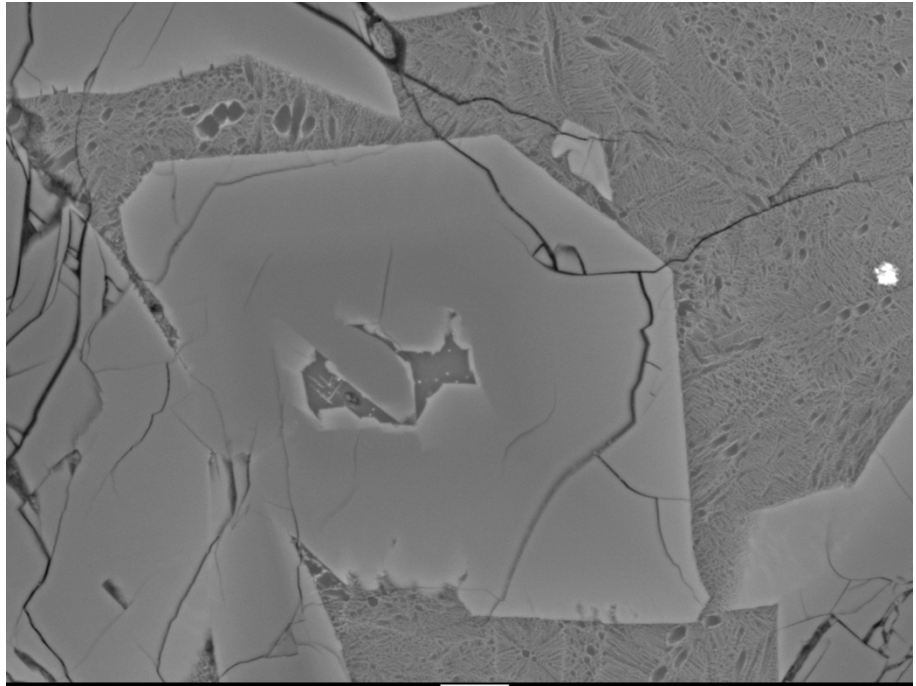


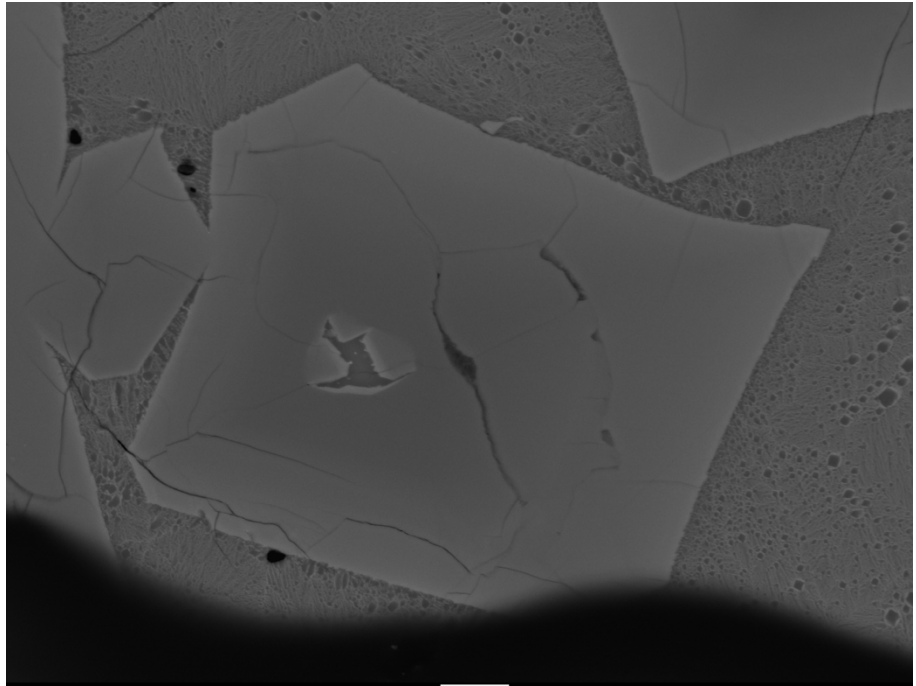
Figure 3. Additional backscattered electron images of 15597 pyroxene-hosted melt inclusions that are broken and/or have cracks.



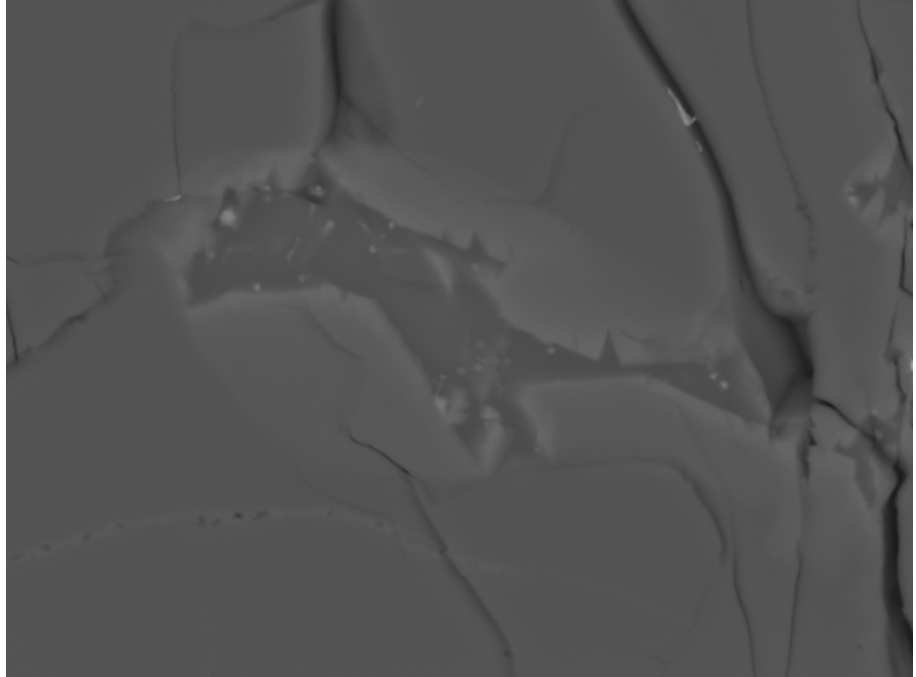
x900 10µm UM-EMAL 2020-07-28
20.0kV BED-C SEM WD 8mm 17:17:11



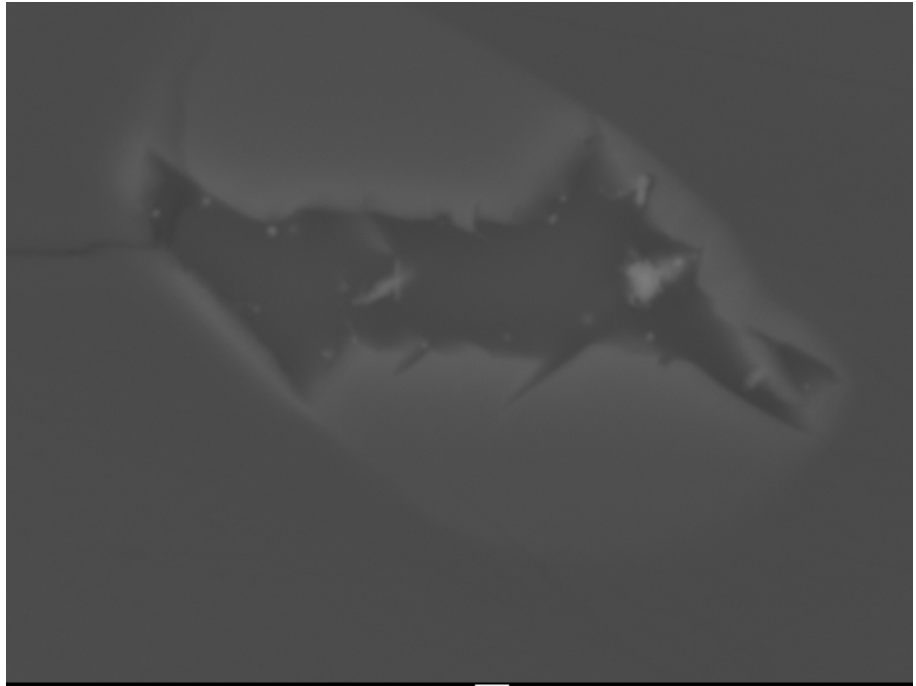
x850 10µm UM-EMAL 2020-08-11
20.0kV BED-C SEM WD 8mm 16:53:43



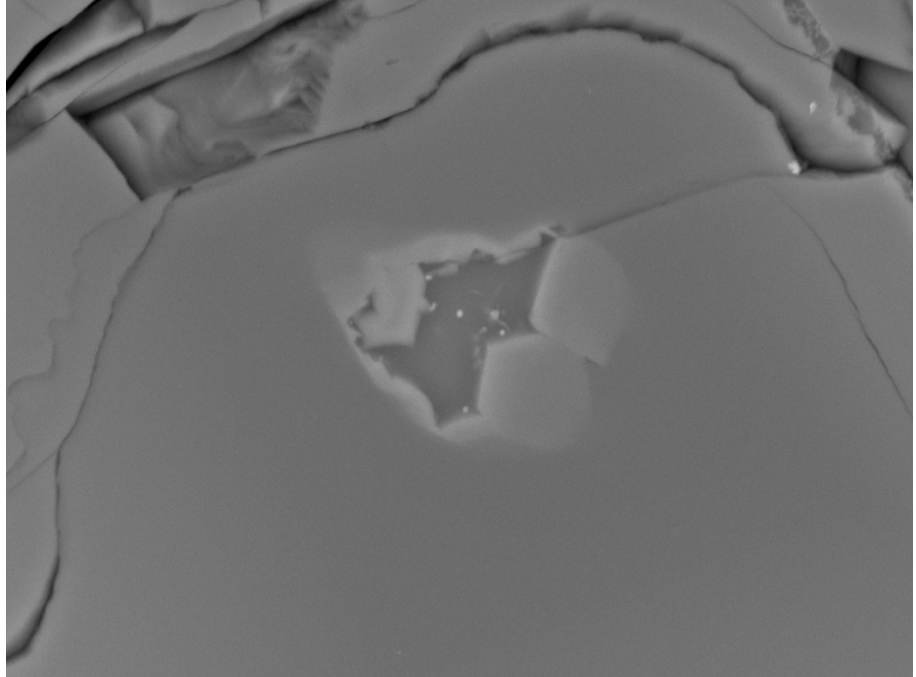
10µm UM-EMAL 2021-01-22
x900 20.0kV BED-C SEM WD 8mm 13:14:23



10µm UM-EMAL 2021-01-29
x2,500 20.0kV BED-C SEM WD 11mm 15:08:30



x4,500 20.0kV BED-C SEM 1μm UM-EMAL 2021-01-29
WD 11mm 15:27:25



x2,200 20.0kV BED-C SEM 10μm UM-EMAL 2022-07-06
WD 13mm 17:07:12

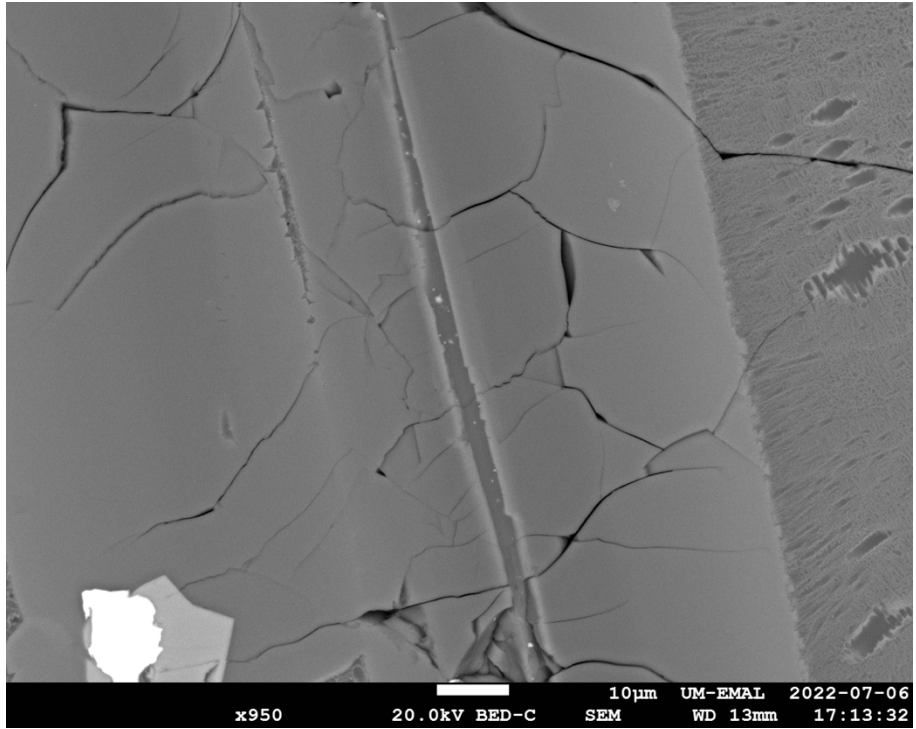
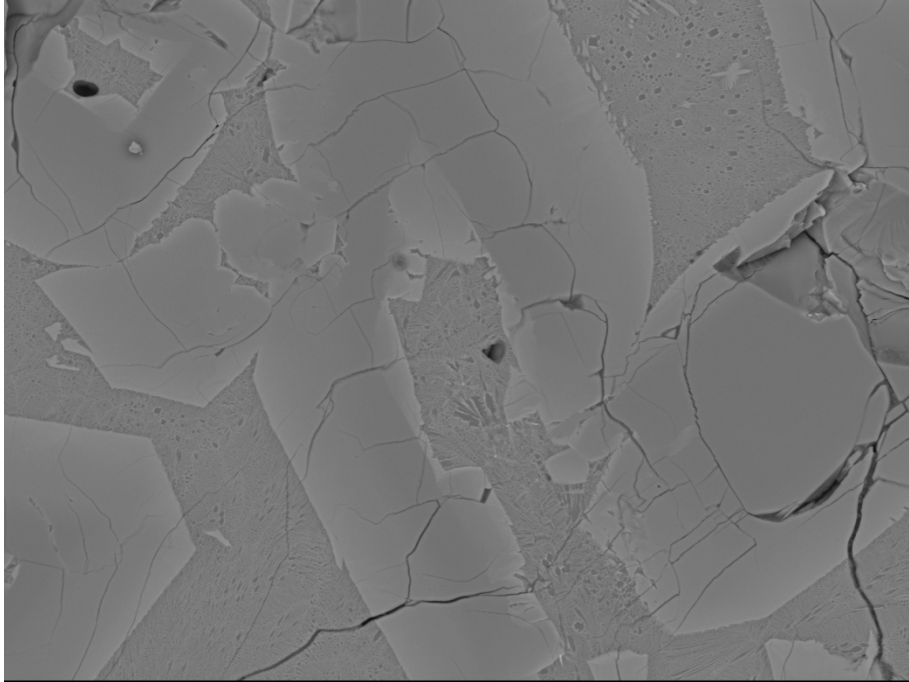
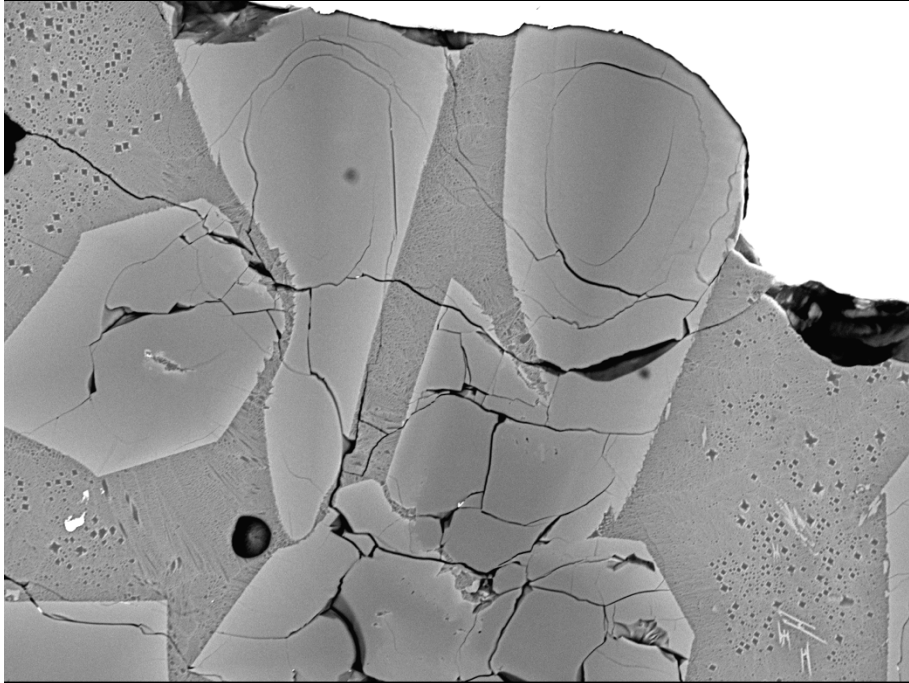


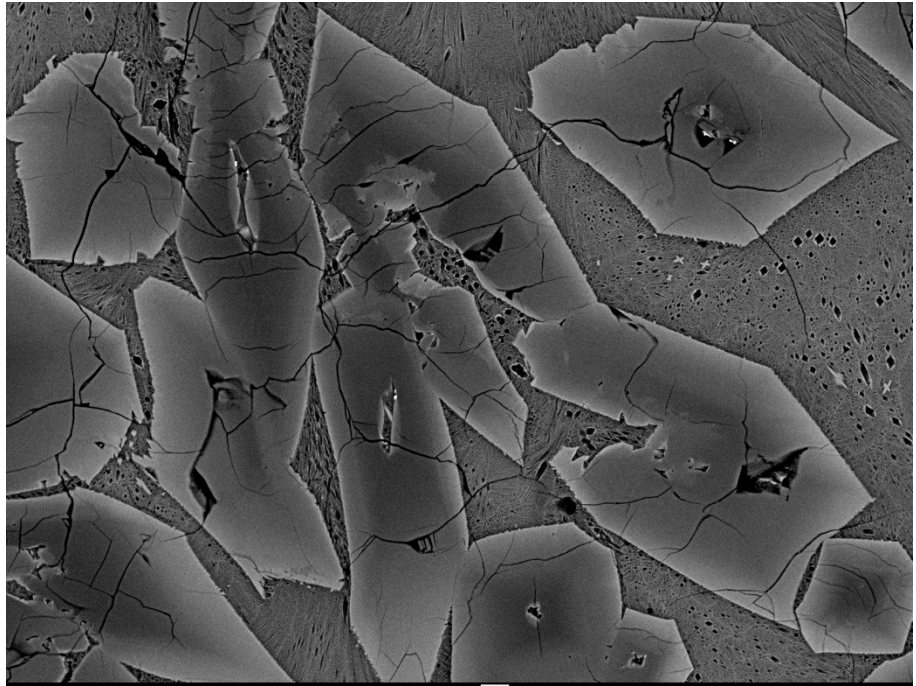
Figure 4. Additional backscattered electron images of 15597 pyroxene-hosted melt inclusions that are glassy but too small.



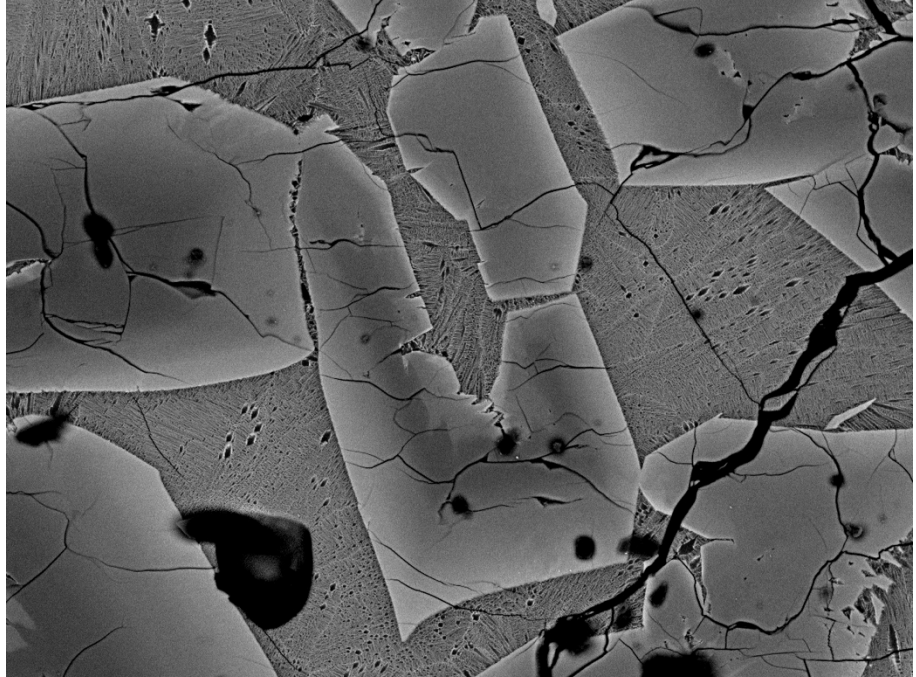
x400 20.0kV BED-C SEM 10µm UM-EMAL 2020-07-13
WD 8mm 17:23:29



x330 20.0kV BED-C SEM 10µm UM-EMAL 2021-01-29
WD 11mm 16:23:17



x370 20.0kV BED-C SEM 10µm UM-EMAL 2022-11-11 WD 10mm 10:36:52



x400 20.0kV BED-C SEM 10µm UM-EMAL 2022-11-11 WD 10mm 10:48:10

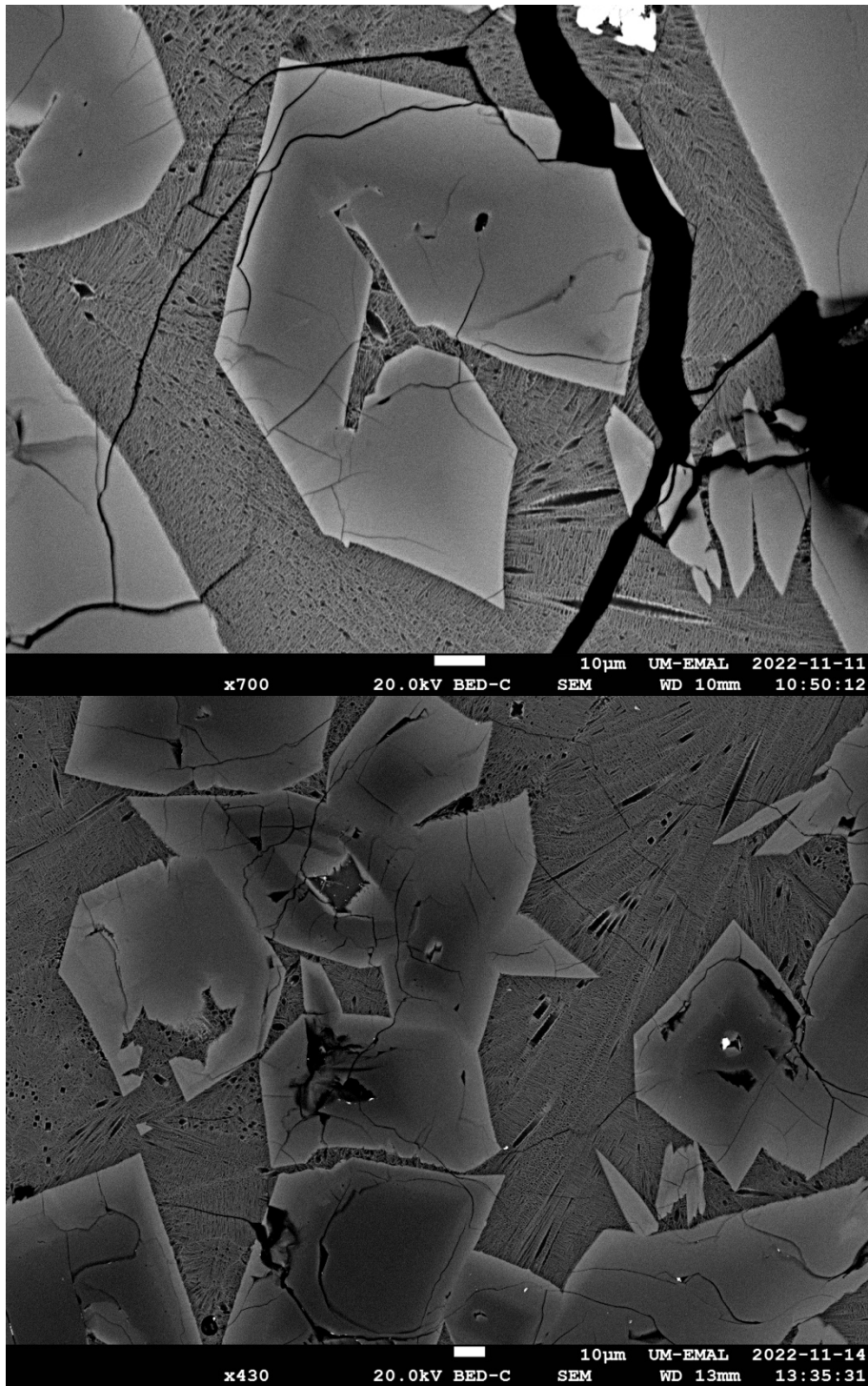


Figure 5. Backscattered electron images of embayment in 15597 pyroxene phenocrysts.