

Team 5: 2012

- 1) Lorenz Bajt --- 4
- 2) Kaidu Kerkas --- 14
- 3) Emir Tofica --- 1
- 4) Sarah James --- 32
- 5) Anisa Burzo --- 33
- 6) Zhaneta Gysmetova --- 39

Zone F Year 2008 001 Tract

Vegetation: ...

Soils: ...

Features: -

Finds: -

4/3/0

Zone F Year 2012 002 Tract

Vegetation: ...

Soils: ...

Features: ...

Finds: ...

5/0/1

Zone F Year 2014 003 Tract

Vegetation: ...

Soils: ...

Features: -

Finds: ...

0/1/0

Zone F Year 2016 004 Tract

Vegetation: ...

Soils: ...

Features: ...

Finds: ...

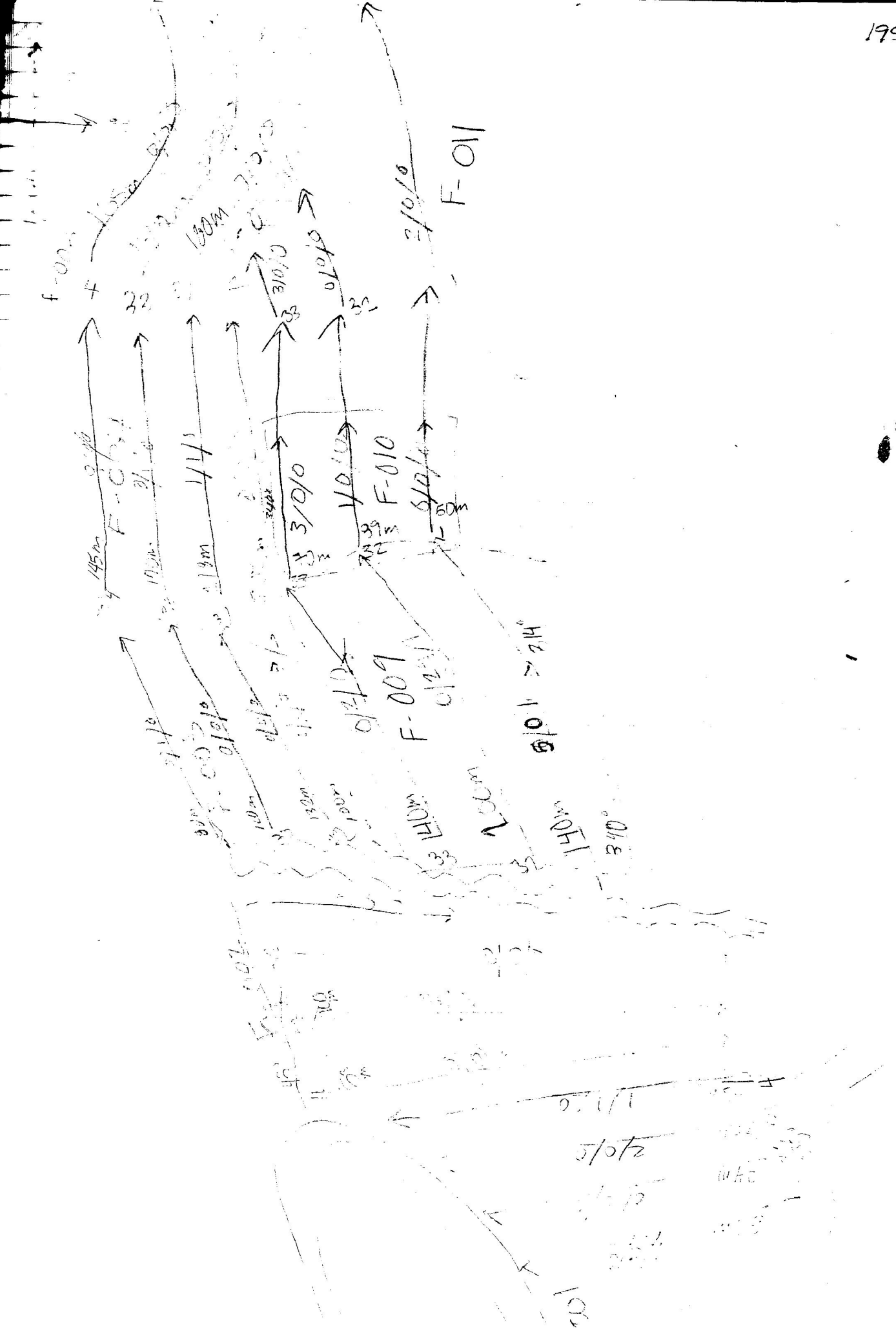
1/1/0

Zone F Year 2018 005 Tract

Vegetation: ...

Soils: ...

0/0/0



Zone F Year 2012 Tract ^F 001

Vegetation dense woods

Area 20'

Features -

Ends electronic street bulb in 22,000 pods

0/0/0

Zone F Year 2012 Tract 007

Vegetation dense woods

Area 20'

Features -

Ends

0/0/0

Zone F Year 2012 Tract 003

Vegetation dense woods

Visibility 95%

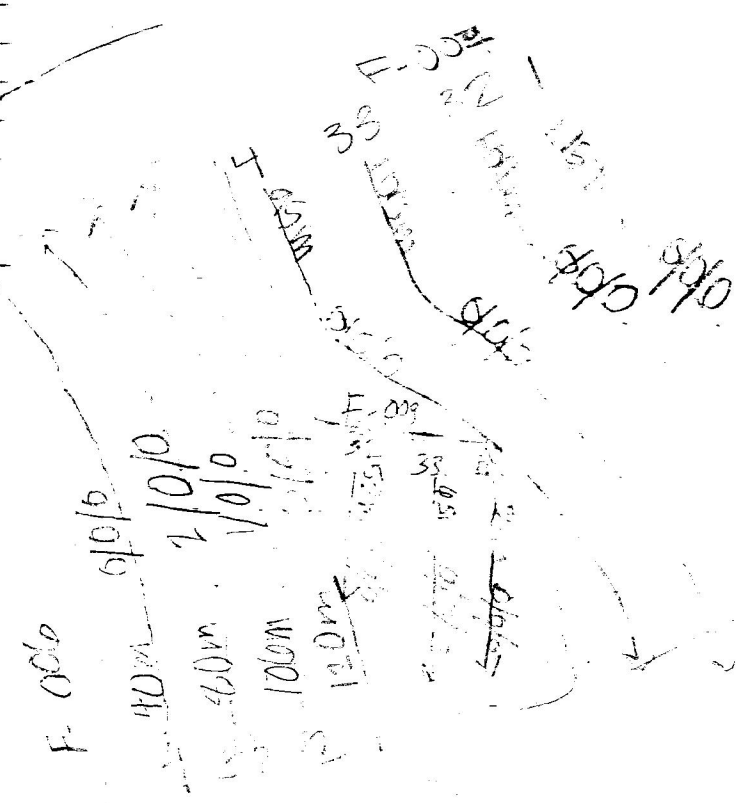
Features -

Area 20'

0/0/0

Zone F Year 2012 Tract

Vegetation



202

Zone: F	Year: 2002	Feet: 009
Vegetation: bushes		
Visibility: 100%		
Features: 50% path row along street wall		
Point: moderate woods, low, 1/2 path		
Side of road, 1/2 path		

5/3/12

Zone: F	Year: 2002	Feet: 010
Vegetation: bushes		
Visibility: 75%		
Features: Feature 1: stone pit, 2: iron, 3: making, 4: 5: 6: 7: 8: 9: 10: 11: 12: 13: 14: 15: 16: 17: 18: 19: 20: 21: 22: 23: 24: 25: 26: 27: 28: 29: 30: 31: 32: 33: 34: 35: 36: 37: 38: 39: 40: 41: 42: 43: 44: 45: 46: 47: 48: 49: 50: 51: 52: 53: 54: 55: 56: 57: 58: 59: 60: 61: 62: 63: 64: 65: 66: 67: 68: 69: 70: 71: 72: 73: 74: 75: 76: 77: 78: 79: 80: 81: 82: 83: 84: 85: 86: 87: 88: 89: 90: 91: 92: 93: 94: 95: 96: 97: 98: 99: 100: 101: 102: 103: 104: 105: 106: 107: 108: 109: 110: 111: 112: 113: 114: 115: 116: 117: 118: 119: 120: 121: 122: 123: 124: 125: 126: 127: 128: 129: 130: 131: 132: 133: 134: 135: 136: 137: 138: 139: 140: 141: 142: 143: 144: 145: 146: 147: 148: 149: 150: 151: 152: 153: 154: 155: 156: 157: 158: 159: 160: 161: 162: 163: 164: 165: 166: 167: 168: 169: 170: 171: 172: 173: 174: 175: 176: 177: 178: 179: 180: 181: 182: 183: 184: 185: 186: 187: 188: 189: 190: 191: 192: 193: 194: 195: 196: 197: 198: 199: 200: 201: 202: 203: 204: 205: 206: 207: 208: 209: 210: 211: 212: 213: 214: 215: 216: 217: 218: 219: 220: 221: 222: 223: 224: 225: 226: 227: 228: 229: 230: 231: 232: 233: 234: 235: 236: 237: 238: 239: 240: 241: 242: 243: 244: 245: 246: 247: 248: 249: 250: 251: 252: 253: 254: 255: 256: 257: 258: 259: 260: 261: 262: 263: 264: 265: 266: 267: 268: 269: 270: 271: 272: 273: 274: 275: 276: 277: 278: 279: 280: 281: 282: 283: 284: 285: 286: 287: 288: 289: 290: 291: 292: 293: 294: 295: 296: 297: 298: 299: 300: 301: 302: 303: 304: 305: 306: 307: 308: 309: 310: 311: 312: 313: 314: 315: 316: 317: 318: 319: 320: 321: 322: 323: 324: 325: 326: 327: 328: 329: 330: 331: 332: 333: 334: 335: 336: 337: 338: 339: 340: 341: 342: 343: 344: 345: 346: 347: 348: 349: 350: 351: 352: 353: 354: 355: 356: 357: 358: 359: 360: 361: 362: 363: 364: 365: 366: 367: 368: 369: 370: 371: 372: 373: 374: 375: 376: 377: 378: 379: 380: 381: 382: 383: 384: 385: 386: 387: 388: 389: 390: 391: 392: 393: 394: 395: 396: 397: 398: 399: 400: 401: 402: 403: 404: 405: 406: 407: 408: 409: 410: 411: 412: 413: 414: 415: 416: 417: 418: 419: 420: 421: 422: 423: 424: 425: 426: 427: 428: 429: 430: 431: 432: 433: 434: 435: 436: 437: 438: 439: 440: 441: 442: 443: 444: 445: 446: 447: 448: 449: 450: 451: 452: 453: 454: 455: 456: 457: 458: 459: 460: 461: 462: 463: 464: 465: 466: 467: 468: 469: 470: 471: 472: 473: 474: 475: 476: 477: 478: 479: 480: 481: 482: 483: 484: 485: 486: 487: 488: 489: 490: 491: 492: 493: 494: 495: 496: 497: 498: 499: 500: 501: 502: 503: 504: 505: 506: 507: 508: 509: 510: 511: 512: 513: 514: 515: 516: 517: 518: 519: 520: 521: 522: 523: 524: 525: 526: 527: 528: 529: 530: 531: 532: 533: 534: 535: 536: 537: 538: 539: 540: 541: 542: 543: 544: 545: 546: 547: 548: 549: 550: 551: 552: 553: 554: 555: 556: 557: 558: 559: 560: 561: 562: 563: 564: 565: 566: 567: 568: 569: 570: 571: 572: 573: 574: 575: 576: 577: 578: 579: 580: 581: 582: 583: 584: 585: 586: 587: 588: 589: 590: 591: 592: 593: 594: 595: 596: 597: 598: 599: 600: 601: 602: 603: 604: 605: 606: 607: 608: 609: 610: 611: 612: 613: 614: 615: 616: 617: 618: 619: 620: 621: 622: 623: 624: 625: 626: 627: 628: 629: 630: 631: 632: 633: 634: 635: 636: 637: 638: 639: 640: 641: 642: 643: 644: 645: 646: 647: 648: 649: 650: 651: 652: 653: 654: 655: 656: 657: 658: 659: 660: 661: 662: 663: 664: 665: 666: 667: 668: 669: 670: 671: 672: 673: 674: 675: 676: 677: 678: 679: 680: 681: 682: 683: 684: 685: 686: 687: 688: 689: 690: 691: 692: 693: 694: 695: 696: 697: 698: 699: 700: 701: 702: 703: 704: 705: 706: 707: 708: 709: 710: 711: 712: 713: 714: 715: 716: 717: 718: 719: 720: 721: 722: 723: 724: 725: 726: 727: 728: 729: 730: 731: 732: 733: 734: 735: 736: 737: 738: 739: 740: 741: 742: 743: 744: 745: 746: 747: 748: 749: 750: 751: 752: 753: 754: 755: 756: 757: 758: 759: 760: 761: 762: 763: 764: 765: 766: 767: 768: 769: 770: 771: 772: 773: 774: 775: 776: 777: 778: 779: 780: 781: 782: 783: 784: 785: 786: 787: 788: 789: 790: 791: 792: 793: 794: 795: 796: 797: 798: 799: 800: 801: 802: 803: 804: 805: 806: 807: 808: 809: 810: 811: 812: 813: 814: 815: 816: 817: 818: 819: 820: 821: 822: 823: 824: 825: 826: 827: 828: 829: 830: 831: 832: 833: 834: 835: 836: 837: 838: 839: 840: 841: 842: 843: 844: 845: 846: 847: 848: 849: 850: 851: 852: 853: 854: 855: 856: 857: 858: 859: 860: 861: 862: 863: 864: 865: 866: 867: 868: 869: 870: 871: 872: 873: 874: 875: 876: 877: 878: 879: 880: 881: 882: 883: 884: 885: 886: 887: 888: 889: 890: 891: 892: 893: 894: 895: 896: 897: 898: 899: 900: 901: 902: 903: 904: 905: 906: 907: 908: 909: 910: 911: 912: 913: 914: 915: 916: 917: 918: 919: 920: 921: 922: 923: 924: 925: 926: 927: 928: 929: 930: 931: 932: 933: 934: 935: 936: 937: 938: 939: 940: 941: 942: 943: 944: 945: 946: 947: 948: 949: 950: 951: 952: 953: 954: 955: 956: 957: 958: 959: 960: 961: 962: 963: 964: 965: 966: 967: 968: 969: 970: 971: 972: 973: 974: 975: 976: 977: 978: 979: 980: 981: 982: 983: 984: 985: 986: 987: 988: 989: 990: 991: 992: 993: 994: 995: 996: 997: 998: 999: 1000		
Features: 3 of the dynamics were too small to		

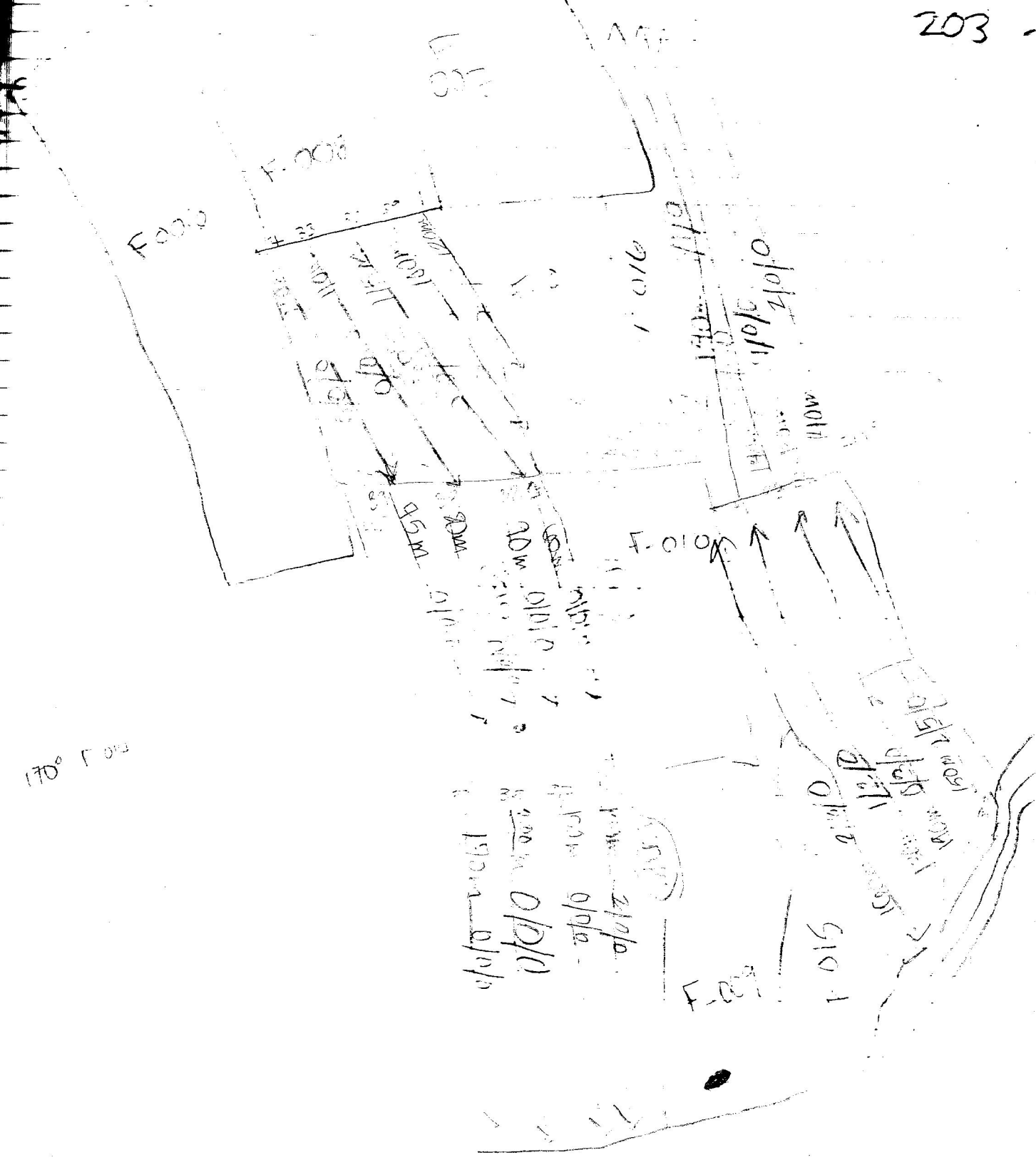
4/0/0

Zone: F	Year: 2002	Feet: 011
Vegetation: bushes		
Visibility: 60%		
Features: Ran into front of 00's		

5/0/0

Zone: F	Year: 2002	Feet: 012
Vegetation: Shrub		
Visibility: 85%		
Features: trail ran into a		

0/0/0



247

Zone: F Year: 2012 Tract: 013

Vegetation: Noque

Vis. 40% for 41/30% for 33, 39, 32

Features: Trench for utility found in yard
Finds: nothing new found

0/0/0

Zone: F Year: 2012 Tract: 014

Vegetation: Noque

Vis. 75%

Features: vegetation, trench for utility
Finds: brick wall, pipe, etc. items included

2/0/0

Zone: F Year: 2012 Tract: 015

Vegetation: Noque to deciduous

Vis. 40%

Features: ^{steps} Wall seen thru #15 data. Foundation wall
Finds: ^{steps} = 21's sink and 2 circular items found
at end of tract in a wall clearing

nothing modern found 5/13/0

Zone: F Year: 2012 Tract: 016

Vegetation: Sit-Union

Vis. 40%

Features: tract is flat, utility trench in yard
Finds: nothing new found

Zone: F Year: 2012 Tract: 017

Vegetation: sparse
visibility: 40%
Features: track ended at glass wall that marks boundary
Modernistic

0/2/1

Zone: F Year: 2012 Tract: 019

Vegetation: sparse
visibility: 20%
Features: foundation walls found in the path
32

1/0/0

Zone: F Year: 2012 Tract: 019

Vegetation: cut grass
visibility: 25%
Features: Hole at beginning of track, small
in the middle of 32's path
Finds: mostly modern

2/4/0

Zone: F Year: 2012 Tract: 020

Vegetation: cut grass
visibility: 80%
Features: two groups of 100 #1's path
modern

F-017

50	400	0/10/0	→
50	800	0/10/0	→
50	1200	0/2/0	→

F-016

1000 0/10/0 →

1400 0/10/0 →

2000 0/10/0 →

1400 0/10/0 →

800 0/10/0 →

F-015

|||||

Zone F Year 2012 Tract 021

Vegetation: low grass, some shrubs
 Visibility: 50%

Features: Cave located at beginning of tract
 Fossils: —

0/4/0

Zone F Year: 2012 Tract 022

Vegetation: tall grass, some shrubs
 Visibility: 50%

Features: three pits w/ cranium located at end of
 Fossils: —

0/0/0

Zone F Year: 2012 Tract 023

Vegetation: low grass, some shrubs
 Visibility: 65%

Features: —

Fossils: Modern finds

2/3/0

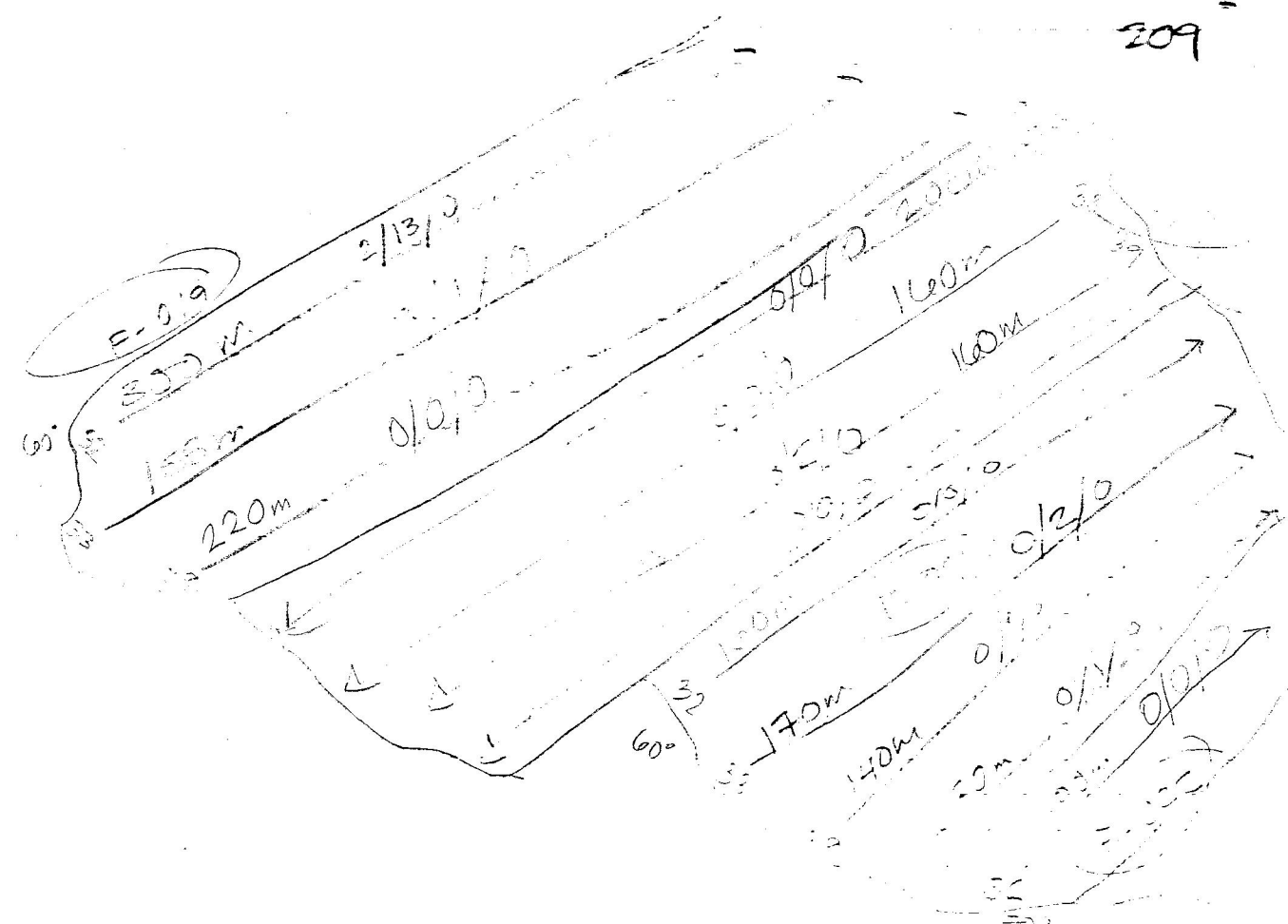
Zone F Year: 2012 Tract: 024

Vegetation: low grass
 Visibility: 60%

Features: —

Fossils: —

1/1/1



Zone F

Year 2002

Plot: 025

Height: 50 cm

Moisture: 30%

Features: First pit at beginning of #22's path

0/0/0

Zone F

Year 2002

Plot: 026

Height: 40 cm

Moisture: 35%

Features: —

Notes: —

0/0/0

Zone F

Year 2002

Plot: 027

Height: 40 cm

Moisture: 55%

Features: Jura in the middle of #22's path

Notes: —

0/0/0

Zone F

Year 2002

Plot: 028

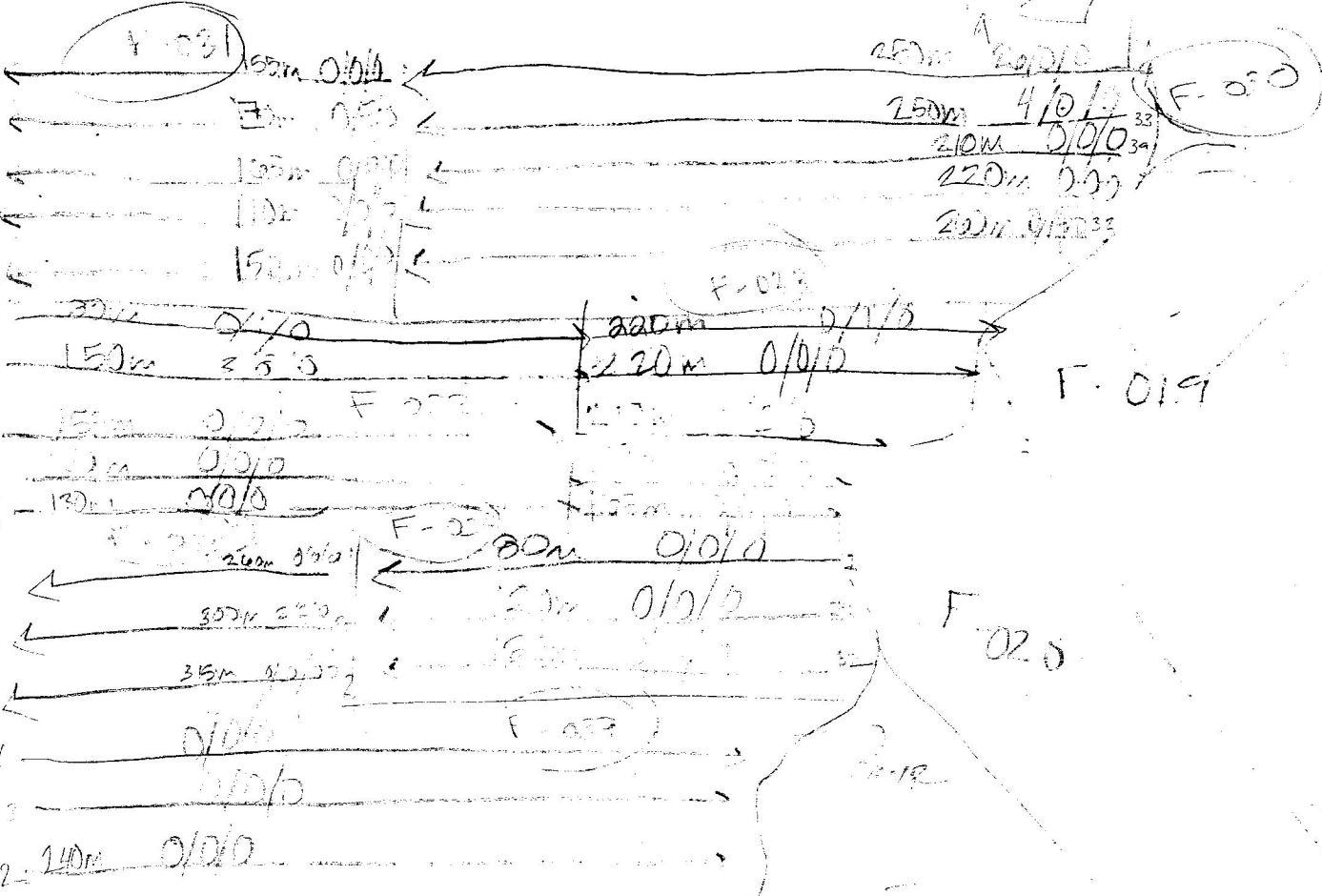
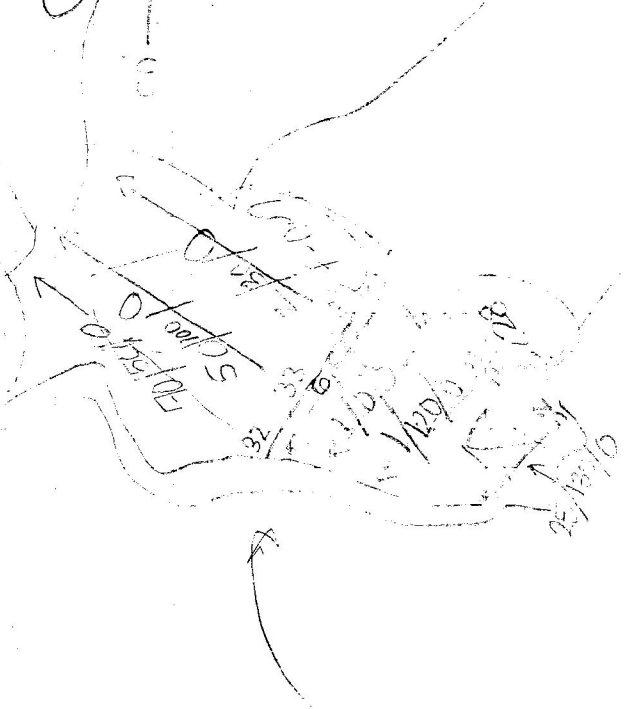
Height: 40 cm

Moisture: 60%

Features: Jura in middle of #22's path

Notes: —

S → NW



F-032

Zone E

Map 2012

Time 030

Vegetation: *Styphelia* *serotina* *subserotina*

cover: 30%

Features: Hedges, etc.

Notes: Many modern fences and structures

120/180/0

Zone E

Map 2012

Time 030

Vegetation: *Erkenia* *sp.* *serotina*

cover: 40%

Features: *Proli*, *and* *etc.* - *Many* *wallet*
wood forming *etc.* *etc.*
Notes: Mostly modern fences

30/4/0

Zone F

Map 2012

Time 031

Vegetation: *Sida* *sp.* *serotina*

cover: 45%

Features: Military structures, *etc.* *etc.*
Notes: Mostly modern fences

0/7/0

Zone F

Map 2012

Time 032

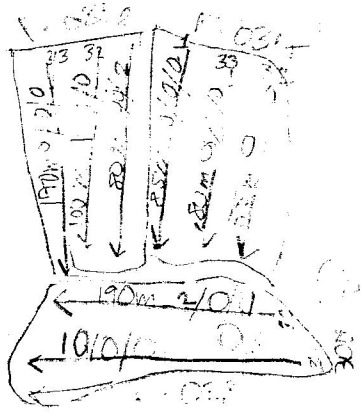
Vegetation: *Styphelia* *serotina*

cover: 50%

Features: Military structures, *etc.* *etc.*
Notes: Mostly modern fences

90

135



Zone F

Year: 2012

Tract 02

Vegetation: 3-4' dense

Viability: 20%

Features: (M) Faint road in center of tract
Grades: -

0/2/11

Zone F

Year: 2012

Tract: 02

Vegetation: 10-12' dense

Viability: 30%

Features: two walls on west side of tract.

Grades: Nothing

0/0/0

Zone F

Year: 2012

Tract: 035

Vegetation: dense dense

Viability: 20%

Grades: -

Grades: -

2/2/10

Zone F

Year: 2012

Tract: 030

Vegetation: cut off and low

Viability: 65%

Grades: -

140
100

F-040

115m 0/0/1
160m 0/2/0
130m 1/1/0
120m 0/0/0

045

130m 0/0/0
120m 0/0/0
110m 0/0/0

170m 1/0/0

220m 0/0/0
210m 0/0/0
190m 0/0/0
165m 0/0/0

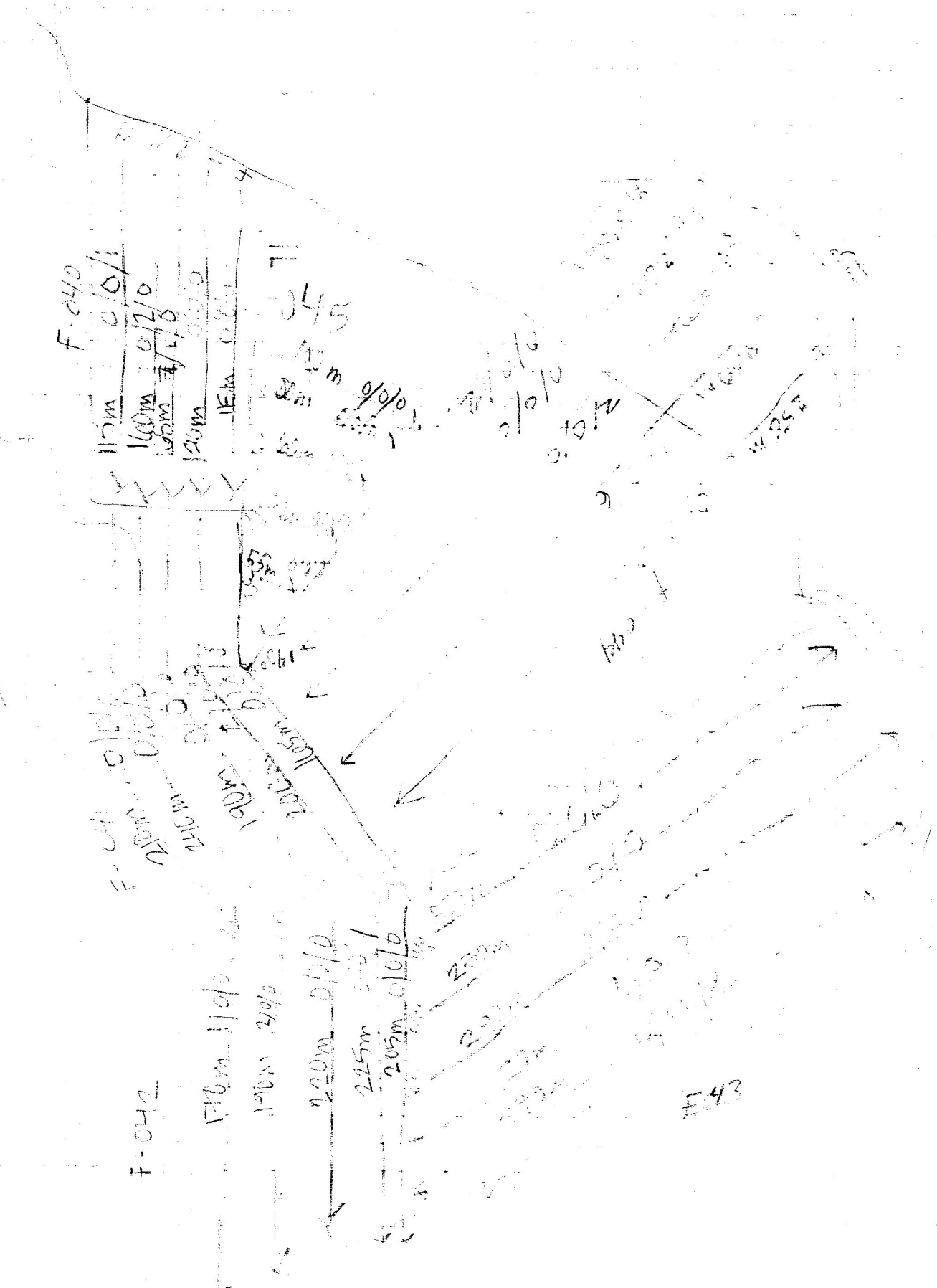
F-042

170m 1/0/0
100m 1/0/0

220m 0/0/0
215m 0/0/1
205m 0/0/0

230m
220m
210m
200m

F-43



Zone F

Year 2012

Track 35

Vegetation: ...
visibility: ...
features: ...
notes: ...

0/2/0

Zone F

Year 2012

Track 36

Vegetation: ...
visibility: ...
features: ...
notes: ...

12/10/11

Zone F

Year 2012

Track 37

Vegetation: ...
visibility: 20%
features: ...
notes: Nothing.

0/0/0

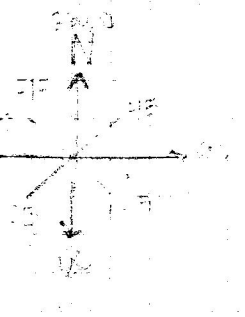
Zone F

Year 2012

Track 40

Vegetation: ...
visibility: ...
features: ...
notes: ...

7/2/11



Zone: F Year: 2012 Tract: 34

Vegetation: dense woods
 Visibility: 100
 Features: —
 Birds: —

Zone F Year: 2012 Tract: 04E

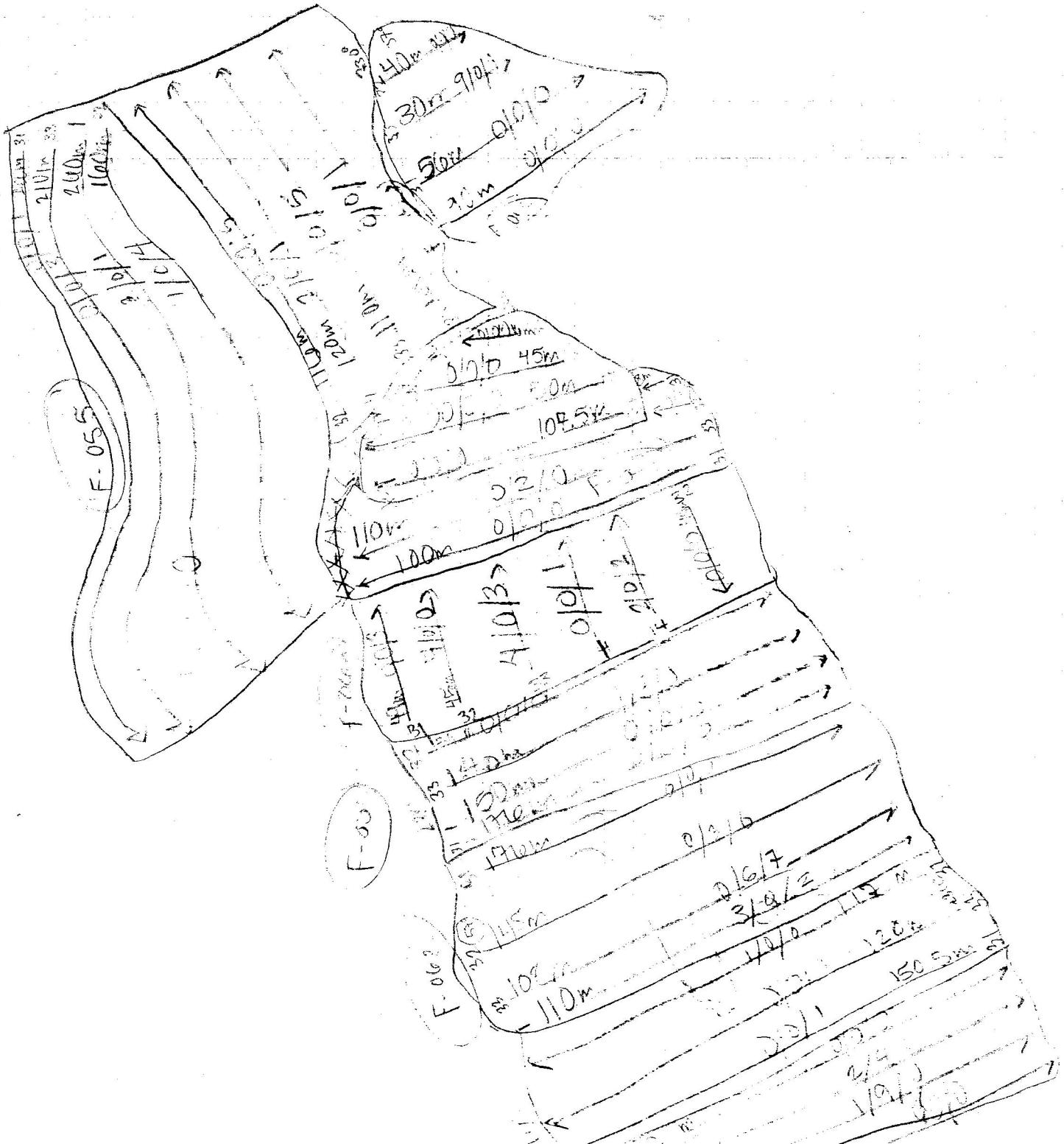
Vegetation: —
 Visibility: 87
 Features: —
 Birds: —

Zone F Year: 2012 Tract: 04E

Vegetation: low brush
 Visibility: 90
 Features: —
 Birds: —

Zone F Year: 2012 Tract: 04E

Vegetation: —
 Visibility: —
 Features: —
 Birds: —



Zone F Year: 2012 Tract 400

Vegetation: ...
Visibility: 40%
Features: ...

0/0/0

Zone F Year: 200 Tract 400

Vegetation: ...
Visibility: 90%
Features: ...

4/0/0

Zone F Year: 200 Tract 400

Vegetation: ...
Visibility: ...
Features: ...

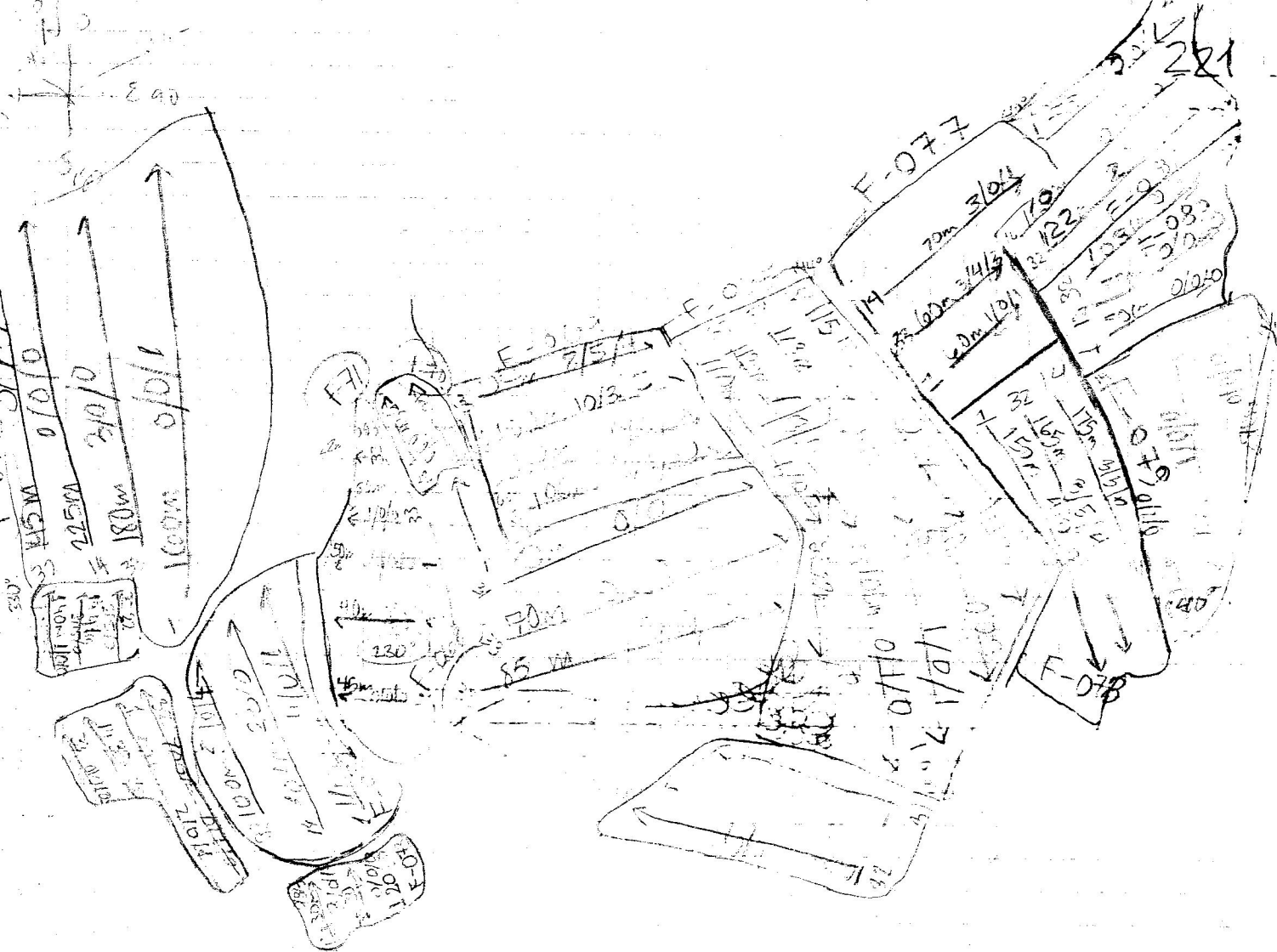
7/0/2

Zone F Year: 202 Tract 400

Vegetation: ...
Visibility: ...
Features: ...

Revisit on 29/05/13
Added lithics

New total:
16/3/2



POST

Zone F Year 2012 Tract 40

Vegetation: ...

...

...

...

2

Zone F Year 2012 Tract 40

Vegetation: ...

...

...

...

1/3/12

Zone F Year 2012 Tract 41

Vegetation: ...

...

...

...

1/3/12

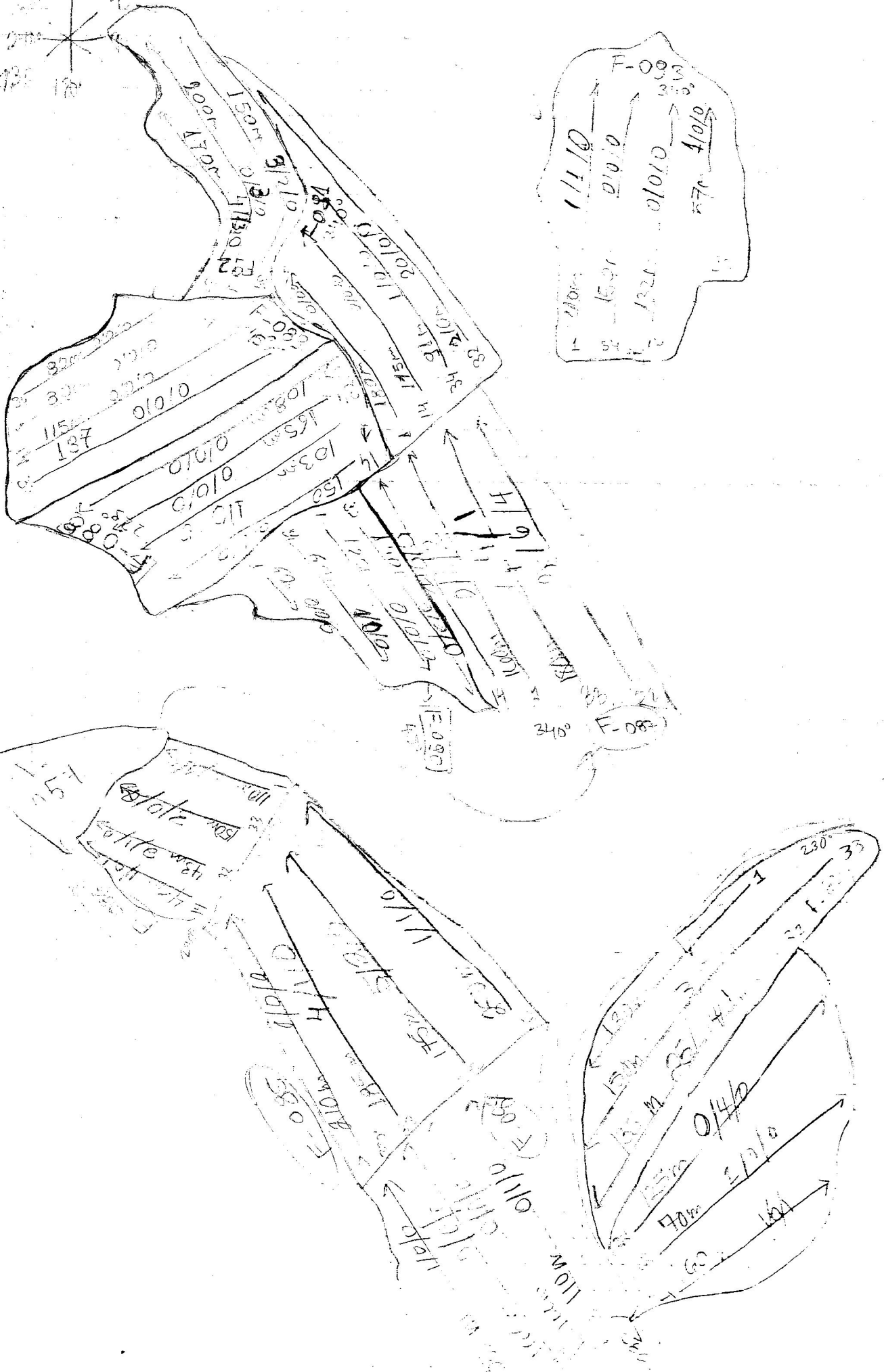
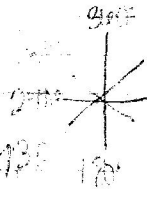
Zone F Year 2012 Tract 52

Vegetation: ...

...

...

...

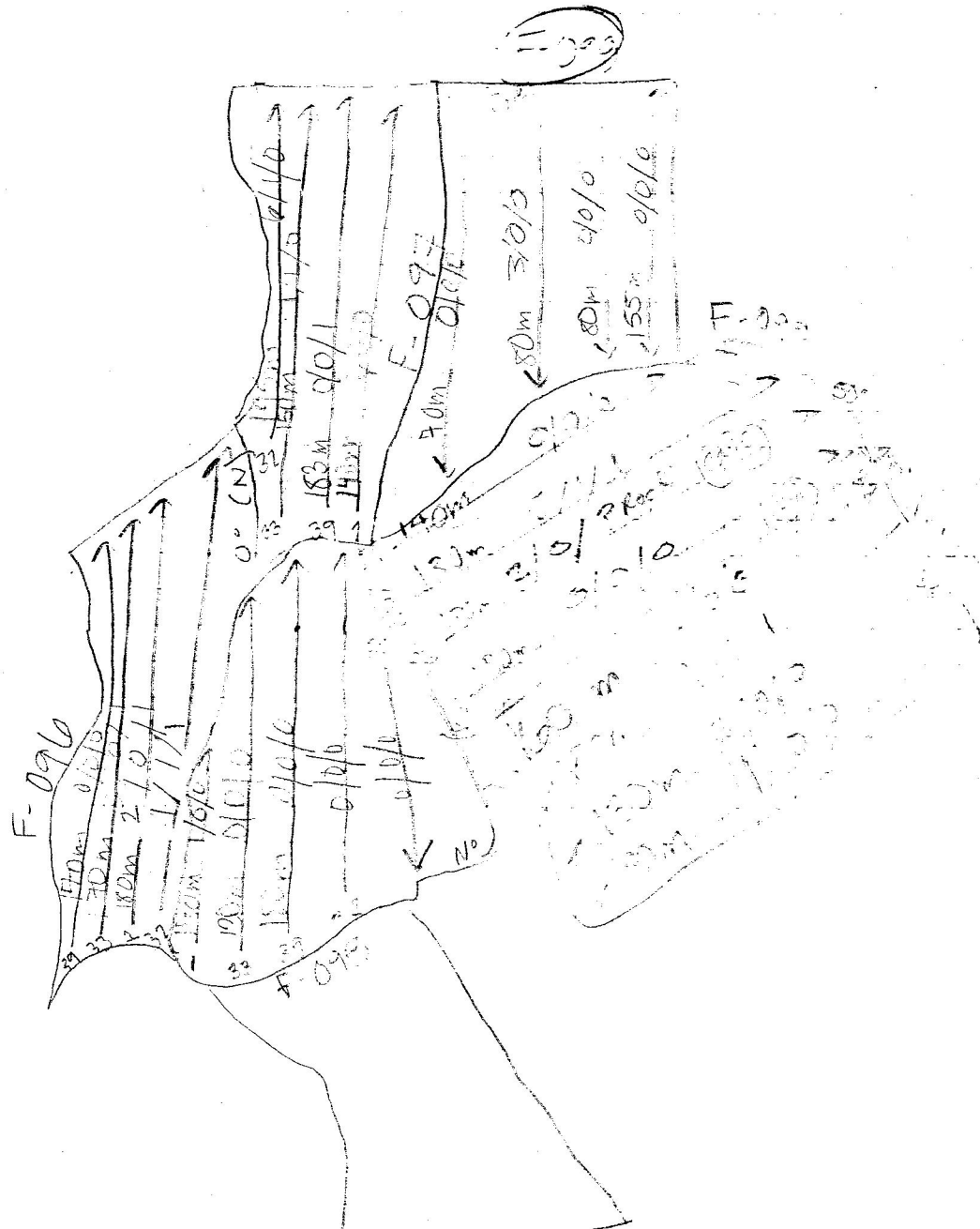


Zone F	2012	F-053
Vegetation - cut grass, low meadow shrubby 30% grasses - 40% ferns -		

Zone F	2012	12/3	F-054
Vegetation - cut grass, low meadow shrubby 30% grasses - 40% ferns -			

Zone F	2012	F-055
Vegetation - cut grass, low meadow shrubby 30% grasses - 40% ferns -		

Zone F	2012	F-056
Vegetation - cut grass, low meadow shrubby 30% grasses - 40% ferns -		



2012

F

2012

F-057

Vegetation cut grass - uncut

Humidity: 57% Jan = 80% Jan = 52.5%

Structure -

Wind -

F

2012

F-058

Vegetation cut grass - few weeds at edge of field

Humidity: 90%

Structure -

Wind -

2012

F-059

Vegetation cut, most grasses down

Humidity: 80%

Structure - large shed at edge of field

Wind - Old, modern quads

0/2/p

Vegetation cut grass

Humidity: 75% Jan = 20% Jan =

Structure -

Wind - some old quads at edge of field

1/4/10

F

2012

F-060

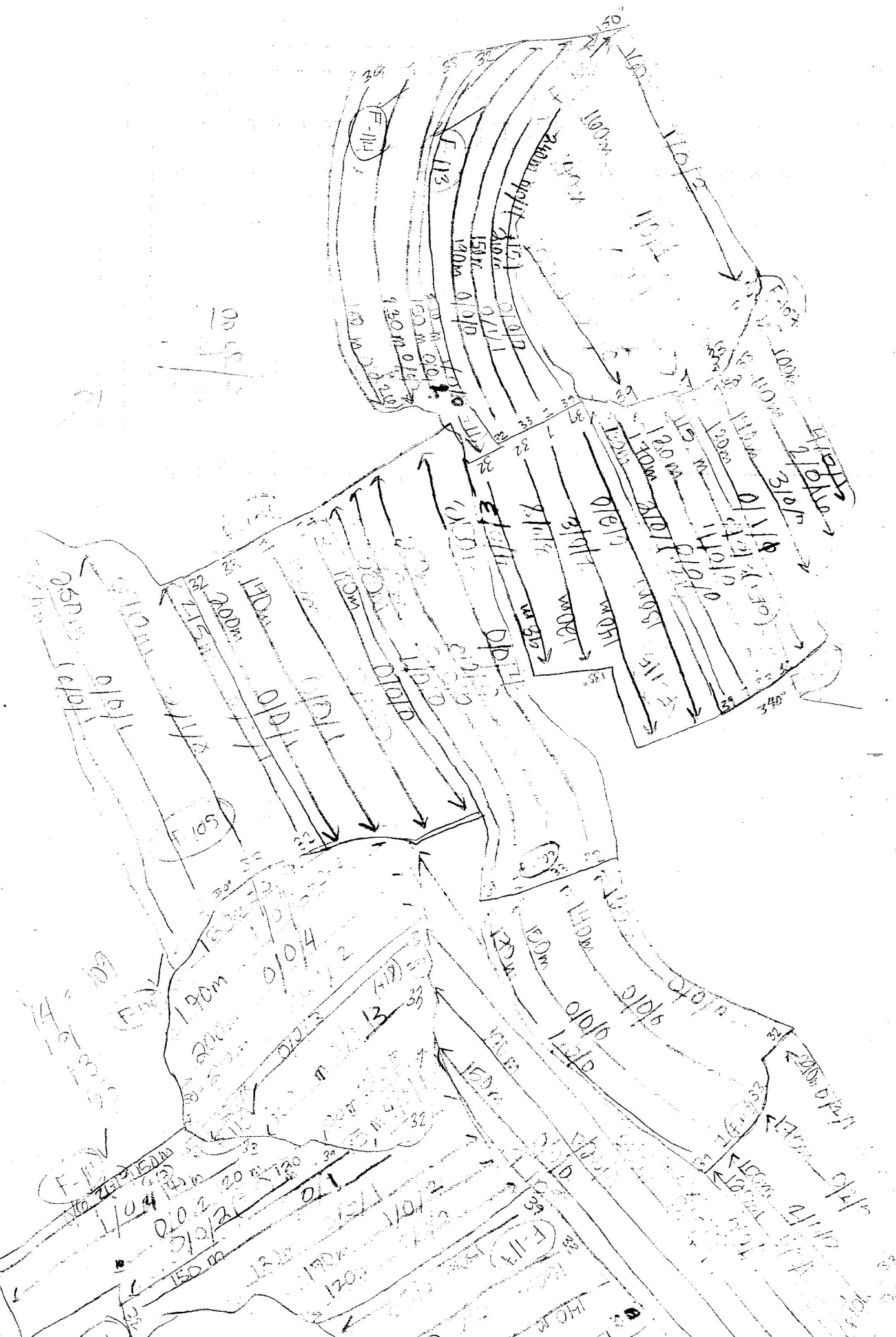
Vegetation cut grass - few weeds

Humidity: 90%

Structure - large shed at edge of field 32, 33 & 130m

Wind - two old quads at edge of field

0/7/10



Clay

2012

F-020

Vegetation cut zone

Vegetation 90%

Soil in soil and soil of road

1/10/11

F

2012

F-021

Vegetation cut zone

Vegetation 80%

Soil in soil

Soil

2/10/11

F

2012

F-022

Vegetation cut zone

Vegetation 95%

Soil in soil

Soil large prehistoric shard found

1/10/11

F

2012

F-023

Vegetation cut zone

Vegetation 80%

Soil in soil - lower zone

Soil. Prehistoric shard found in vegetation

1/10/11

F

2012

F-024

Vegetation cut zone

Vegetation 80%

Soil in soil and soil of road

Soil in soil

1/10/11



Team F

608

F 068

2 units cut grass

1 unit cut grass

1 unit cut grass

1 unit cut grass

0/0/0

Team F

608

F 300

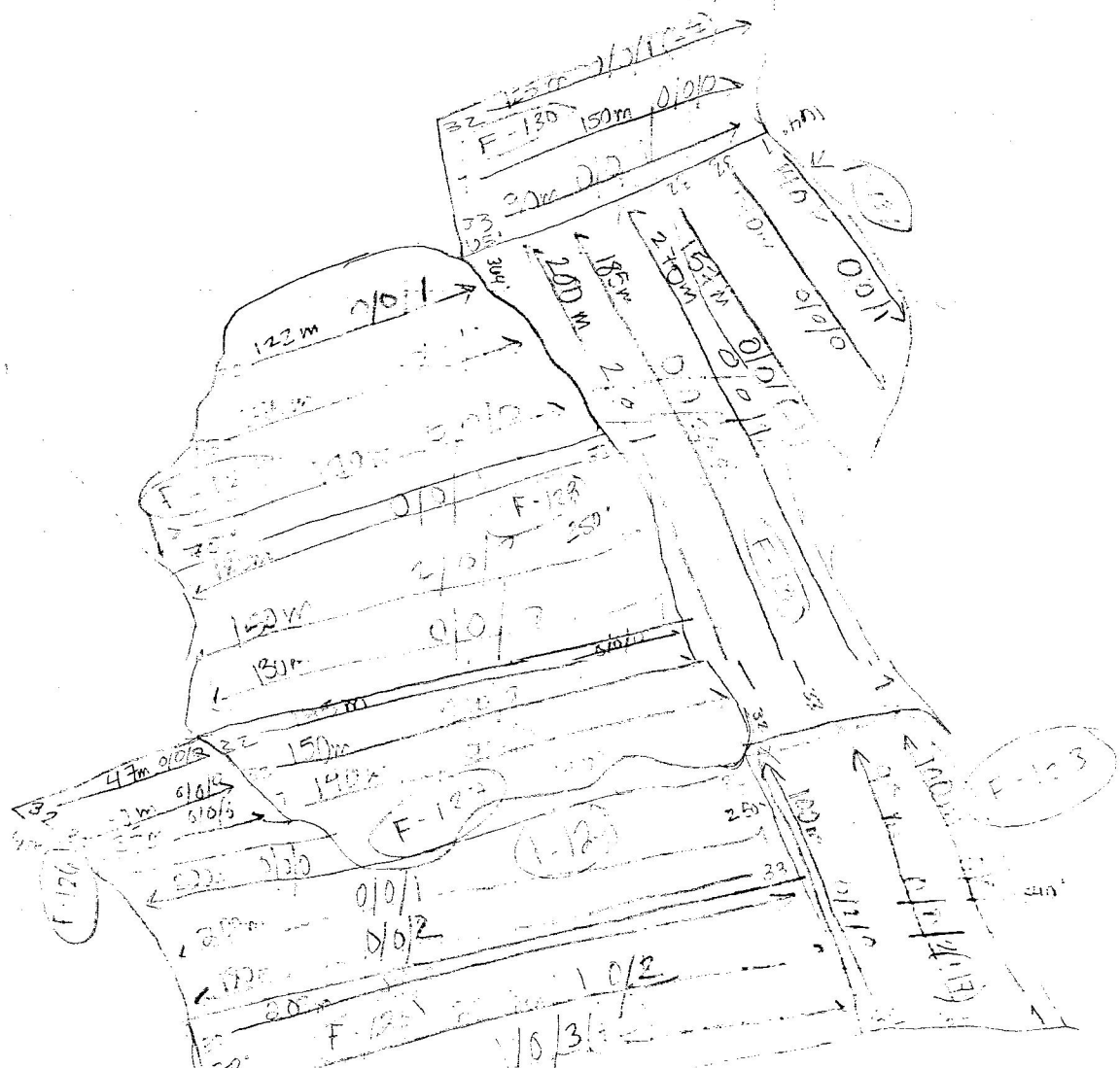
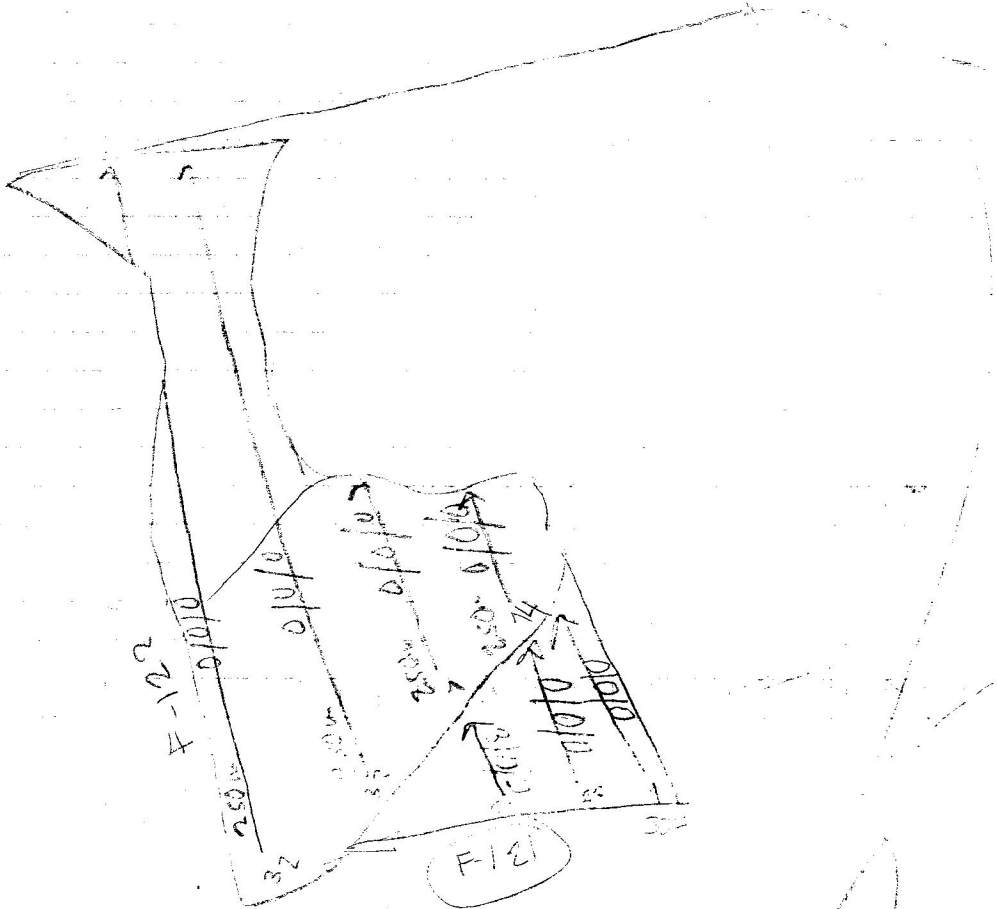
1 unit cut tobacco cut grass

1 unit cut grass

1 unit cut grass

Food arrived at 11:00 AM. The ground is very dry.

1/1/0



52

Zone F Temp 25C T 000 000

Section 2000 2000

1000 93%

features -

solid a lot of water ...

22/0/0

Zone F Temp 20C T 000 010

Section 2000 2000

1000 93%

features -

solid ...

0/0/0

Zone F Temp 20C T 000 071

Section 2000 2000

1000 93%

features -
solid ...

1/0/0

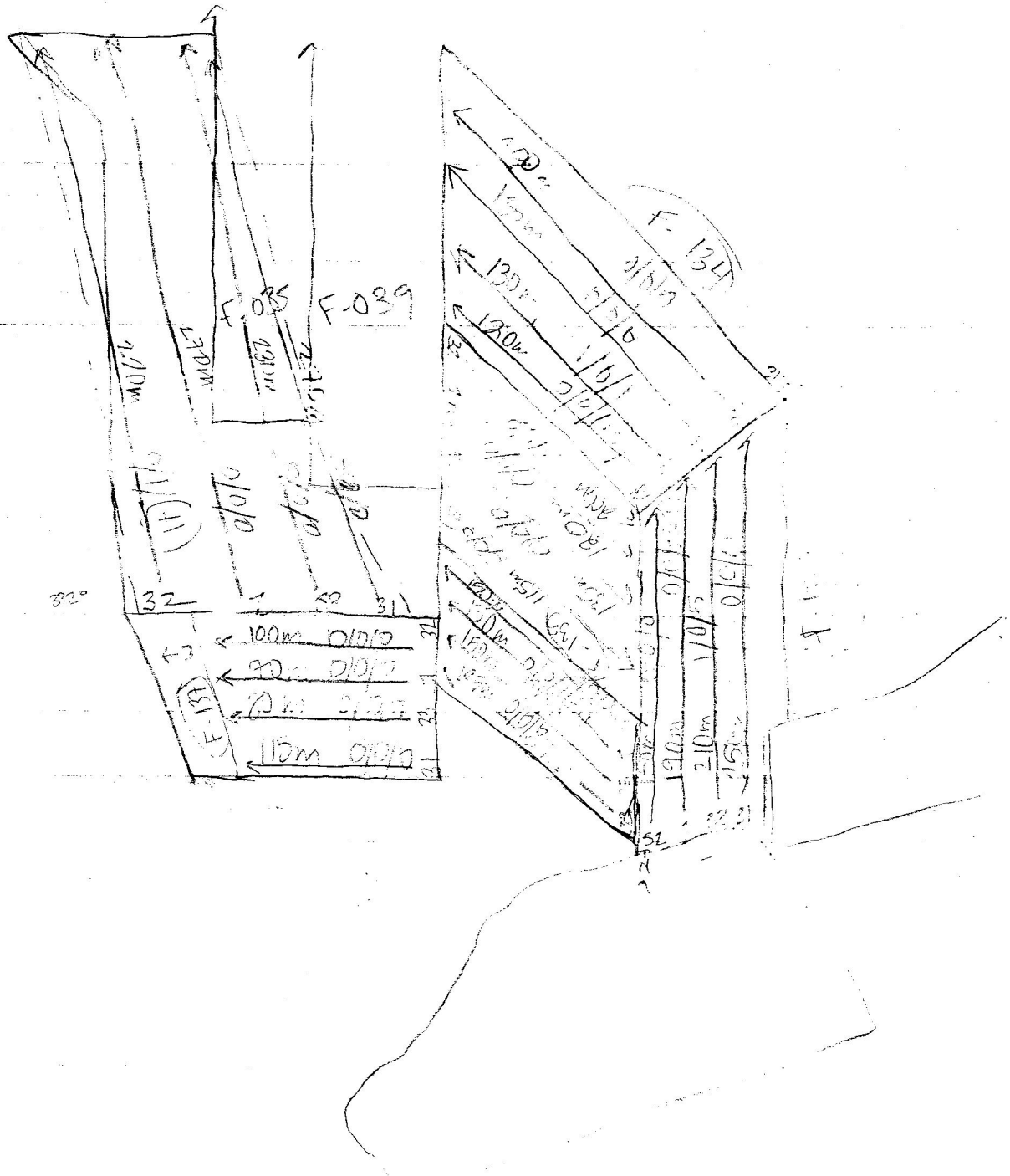
Zone F Temp 20C T 000 000

Section 2000 2000

1000 93%

features -
solid ...

11/0/0



254

Zone F Year 2010 Total 075

Vegetation on 1/20/10 for 3/10
70%
1/20/10
3/10/10

3/10/10

Zone F Year 2010 Total 074

Vegetation on 1/20/10 for 3/10
70%
1/20/10
3/10/10

2/1/10

Zone F Year 2010 Total 065

Vegetation on 1/20/10 for 3/10
70%
1/20/10
3/10/10
a lot of vegetation on 1/20/10
70%
1/20/10
3/10/10

12/20/10

Zone F Year 2010 Total 070

Vegetation on 1/20/10 for 3/10
70%
1/20/10
3/10/10
a lot of vegetation on 1/20/10
70%
1/20/10
3/10/10

200

Zone F	Year 2000	Treat 077
Vegetation cut grass		
visibilty 95%		
Grass: -		
insects: lots of modern tile, ^{open to the north} dirt center around 3/22/02		

7/4/5

Zone F	Year 2000	Treat 078
Vegetation cut grass		
visibilty 95%		
Grass: -		
insects: lots of modern tile		

15/8/4

Zone F	Year 2000	Treat 079
Vegetation cut grass		
visibilty 45%		
Grass: -		
insects: - only one modern tile		

1/2/0

Zone F	Year 2000	Treat 030
Vegetation cut grass		
visibilty 70%		
Grass: -		

0/0/0

1978

Zone F	Year 700	Point 031
Vegetation: low brush in stream		
visibility: 50%		
features: -		
Lichen on rocks, rocks, grass		

12/2/1

Zone F	Year 700	Point 032
Vegetation: dense brush		
features: 20%		
visibility: terrain with brush, through stream		

3/4/1

Zone F	Year 700	Point 033
Vegetation: brush, grass		
visibility: 50%		
features: -		
Lichen		

29/12/1

Zone F	Year 700	Point 034
Vegetation: Out grass, brush		
visibility: 70%		
Lichen on rocks, grass, brush		

Zone F Year: 2012 Tract: 085

Vegetation: dense meadow
 Visibility: 30%
 Features: — track and old fence line
 Ponds: —

10/14/0

Zone F Year: 2012 Tract 086

Vegetation: dense meadow
 Visibility: 40%
 Features: — track and old fence line of
 Pond: F-057
 Ponds: —

6/11/3

Zone F Year: 2012 Tract 87

Vegetation: dense meadow
 Visibility: 70%
 Features: — track and old fence line
 Ponds: —

57/10/7

Zone F Year: 2012 Tract 033

Vegetation: shrubs and low bushes
 Visibility: 50%
 Features: — track and old fence line
 Ponds: —

Tract 89

Vegetation: 2m tall grass in dense shrubs

visibility: 50%

features: Wind noise is heard to the south

birds: -

0/0/0

Tract 090

Vegetation: Bar in shrubs

visibility: 75%

features: No wind noise filling to the south

birds: mostly birds

birds: quite a few birds & frog sounds

1/0/0

Tract 091

Vegetation: Shrub to the north

visibility: 70%

features: No wind noise to the north

birds: quite a few birds, mostly birds, probably

2/0/0

Tract 092

Vegetation: Bush

visibility: 50%

features: No wind noise to the north, some

birds: mostly birds

birds: mostly birds, some

birds: mostly birds

birds: mostly birds

birds: mostly birds

Tract F-093

Vegetation: low scrub

Visibility: 50%

Features: No vegetation on the hill (side of hill)
No roads

2/1/0

Tract: 094

Vegetation: dense mangroves, all grass

Visibility: 50%

Features: Walls seen on the tract and there was
also some terracing

0/0/0

Tract 095

Vegetation: Mangroves and tall grass
Shrub

Visibility: 70%, 75%

Features: —

Roads: —

1/0/0

Tract: 096

Vegetation: few mangroves and tall grass

Visibility: 70%

Features: Red sand soil found

tract F-097

Vegetation ^{Forest} ~~Forest~~

visibility 70%

features —

fields ^{fragments} ~~fragments~~ ^{granite} (granite outcrops?)

8/7/0

tract 098

Vegetation ^{Forest} ~~Forest~~

visibility 80%

features ^{fields} ~~fields~~ ^{granite} (granite outcrops?)

fields

3/0/0

tract 099

Vegetation ^{Forest} ~~Forest~~

visibility 50%

features ^{fields} ~~fields~~ ^{granite} (granite outcrops?)

fields ^{fragments} ~~fragments~~ ^{granite} (granite outcrops?)

8/1/40

Tract 100

Vegetation ^{Forest} ~~Forest~~

visibility 50%

features ^{fields} ~~fields~~ ^{granite} (granite outcrops?)

fields ^{fragments} ~~fragments~~ ^{granite} (granite outcrops?)

Tract: 101

Vegetation: few weeds

visibility: 80%

features: terracing

6/4/1

Tract: 102

Vegetation: few weeds

visibility: 80%

features: 32's path followed along the terrace,
no barriers were given

1/0/0

Tract: 103

Vegetation: few weeds

visibility: 80%

features: 32's path continued along terrace,
no barriers were given

1/0/4

Tract: 104

Vegetation: very few weeds

visibility: 90%

features: tract ended at wall that stretched a
small overgrown path

Tract 105

Vegetation: sparse

visibility: 100%

features: —

finds: —

10/1/83

Tract: 106

Vegetation: sparse

visibility: 80%

features: —

finds: —

2/0/7

Tract: 107

Vegetation: ^{low} sparse

visibility: 60%

features: —

finds: Mineral of copper found at the beginning of 33's path

9/1/88

Tract: 108

Vegetation: in bushes

visibility: 85%

features: small fields and 2 circular holes

finds: —

Very little material found

Tract 109

Walter J. ...

... = 5%

...

A lot of ... found in ...

0/20/1

Tract 110

Walter J. ...

... 70%

... found in ...

A lot of copper ... found in ...

6/1/28

Tract 111

Walter J. ...

... 85%

... found in ...

A lot of copper ... found in ...

1/6/105

Tract 112

Walter J. ...

... (95%)

...

A lot of copper ... found in ...

Tract 113

Vegetation: ³⁰⁰⁰alloquie

Visibility: 90%

Features: Tract followed the wall of an enclosed field. no iron or copper ore found in 395 tract

0/1/2

Tract 114

Vegetation: few weeds

Visibility: 95% (80% for 32)

Features: ^{Top} followed edge of line for tract 113; no barbing was visible

Soils: Iron/Copper ore found in 395 tract

1/0/39

Tract 115

Vegetation: few weeds

Visibility: 80%

Features: —

Soils: —

9/2/14

Tract 116

Vegetation: few weeds

Visibility: 85%

Features: —

Soils: —

Tract 117

Vegetation: few magnific

visibility: 80%

Seeds: field scattered w/ stone at the beginning of 3L's path.

1/8/2

Tract 118

Vegetation: magnific

visibility: 85%

Seeds: some found in 1300th field of the spring

5/2/4

Tract 119

Vegetation: few magnific

visibility: 90%

Seeds: —

Seeds: very few seeds

2/0/1

Tract 120

Vegetation: few magnific

visibility: 80%

Seeds: —

Seeds: few seeds

tract: 121

Vegetation: ...

visibility: ...

features: ...

birds: ...

3/0/0

tract: 122

Vegetation: ...

visibility: ...

features: ...

birds: ...

0/0/0

Tracts 123

Vegetation: ...

visibility: ...

features: ...

Birds: ... [in 33rd tract]

0/2/19

Tracts 124

Vegetation: ...

visibility: ...

features: ...

birds: ... Strallat

Tract: 125

Vegetation: 110 ft

visibility: 85%

features: —

guides: —

2/0/7

Tract: 126

Vegetation: 120 ft

visibility: 80%

features: —

guides: —

0/0/0

Tract: 127

Vegetation: very dense

visibility of: 60% for 30'; 15% for 40'

features: track, road, fence, etc.

guides: —

2/0/0

Tract: 128

Vegetation: Very, very dense

visibility: 5%

features: military base, etc.

guides: —

Tract 129

Vegetation: low density, marginal

visibility: 95%

features: —

birds: — several mixed

0/0/2

Tract 130

Vegetation: very few marginal

visibility: 90%

features: —

birds: 100% mixed found in 30's path

0/0/3

Tract 131

Vegetation: low density, marginal

visibility: 80%

features: —

birds: — 100% mixed found in 30's path

0/0/2

Tract 132

Vegetation: low density

visibility: 95%

features: —

birds: 100% mixed found in 30's path

Tract 133

Vegetation dense mesquite

Acidity 5%

Potassium —

Iron mineral present in soil

1/10/1911

Tract 134

Vegetation dense mesquite

Acidity 20%

Potassium —

Iron mineral present in soil

1/10/1911

Tract 135

Vegetation dense mesquite

Acidity 5%

Potassium —

Iron —

1/10/1911

Tract 136

Vegetation dense mesquite

Acidity 20%

Potassium —

Iron mineral

present in soil

Trail 137

Vegetation - mostly

open 15%

Wetland - 4/10 - very fresh in 30' water

Trail -

1

Trail 138

Vegetation - mostly

open 15%

Wetland - 4/10 - very fresh in 30' water

Wetland - 4/10 - very fresh in 30' water

2/110

Trail 139

Vegetation - mostly

open 75%

Wetland -

Wetland - a few patches of

2/110

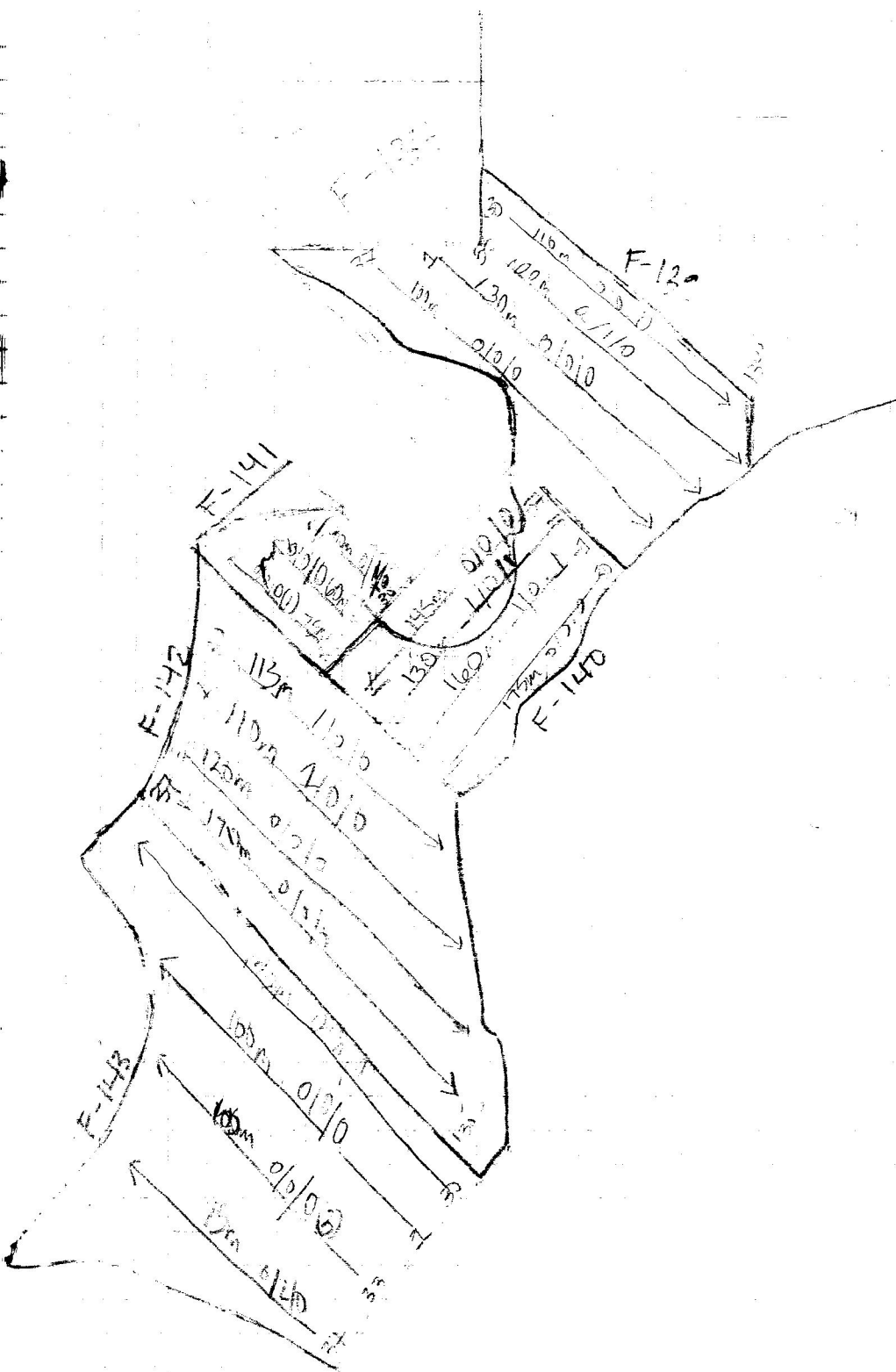
Trail 140

Vegetation - mostly

open 75%

Wetland - a few patches of

Wetland - a few patches of



Trail 141

Winters (see map)

altitude 70'

features: ... in ...
... ..

0/1/1

Trail 142

Winters (see map)

altitude 35'

features:

3/1/1

Trail 143

Winters (see map)

altitude 35'

features:

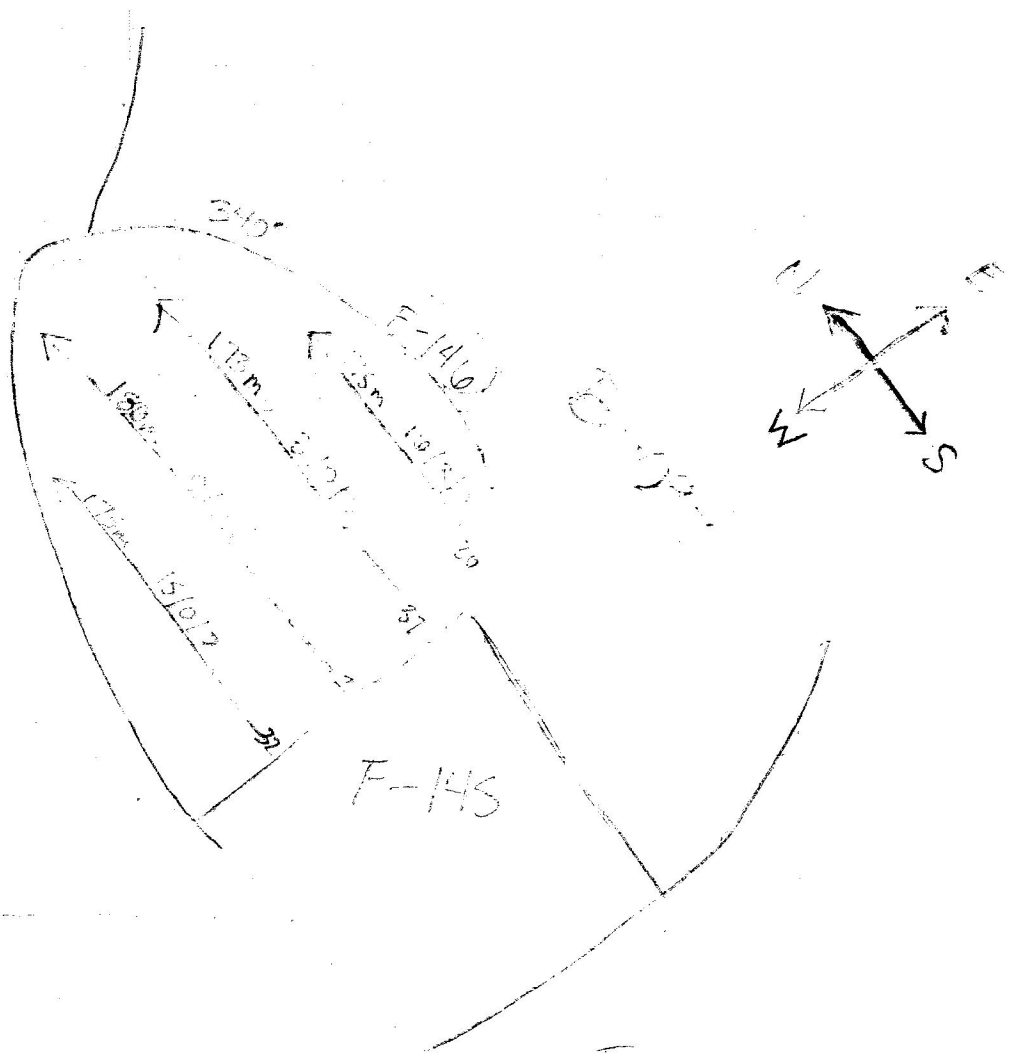
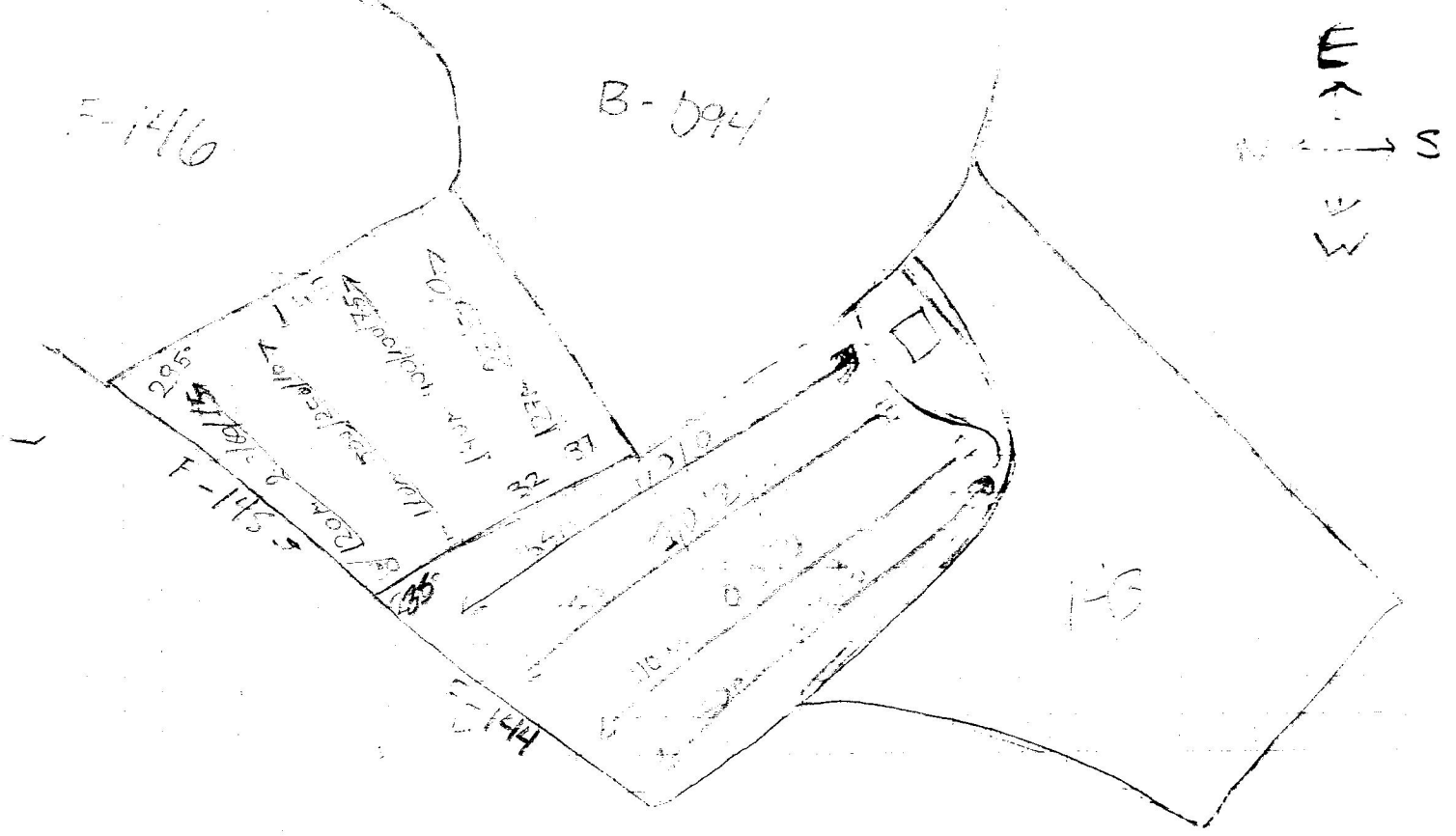
0/1/3

Trail 144

Winters (see map)

altitude 35'

features:



145

Vegetation: Sparse

Visibility: 75%

Features: Terrace wall visible

Grass: 90% in clumps, sparse, patchy

143-81D-95

146

Vegetation: Sparse

Visibility: 75%

Features: Wall visible, showing to top

Grass: patchy, low cover

24/3/0

147

Vegetation:

Visibility:

Features:

Grass:

148