

Team I

"We're all
about the 'I'
in team."

Team Members:

- 1.) Kailey Rocker --- 14
- 2.) Michael Galaty --- 3
- 3.) Zhaneta Gjusia --- 39
- 4.) Zamir Tafilica --- 1
- 5.) Rudenc --- 46
- 6.) Alba Selita --- 28

"There's an 'I' in our and it's us."

Tract: 001

Vegetation: low grass

visibility: (low) 20%

features: nothing found

finds: Tract on lower terrace 1 mile of the river

GPS:

0/0/0

Tract: 002

Vegetation: low grass

visibility: 95%

features: 1st level of terracing

finds: Modern?

GPS:

0/1/0

Tract: 003

Vegetation: 80% grass

visibility: 95%

features: Lower-level terrace

finds: Nothing, old modern?

GPS:

0/0/0 1/1/0

Tract: 004

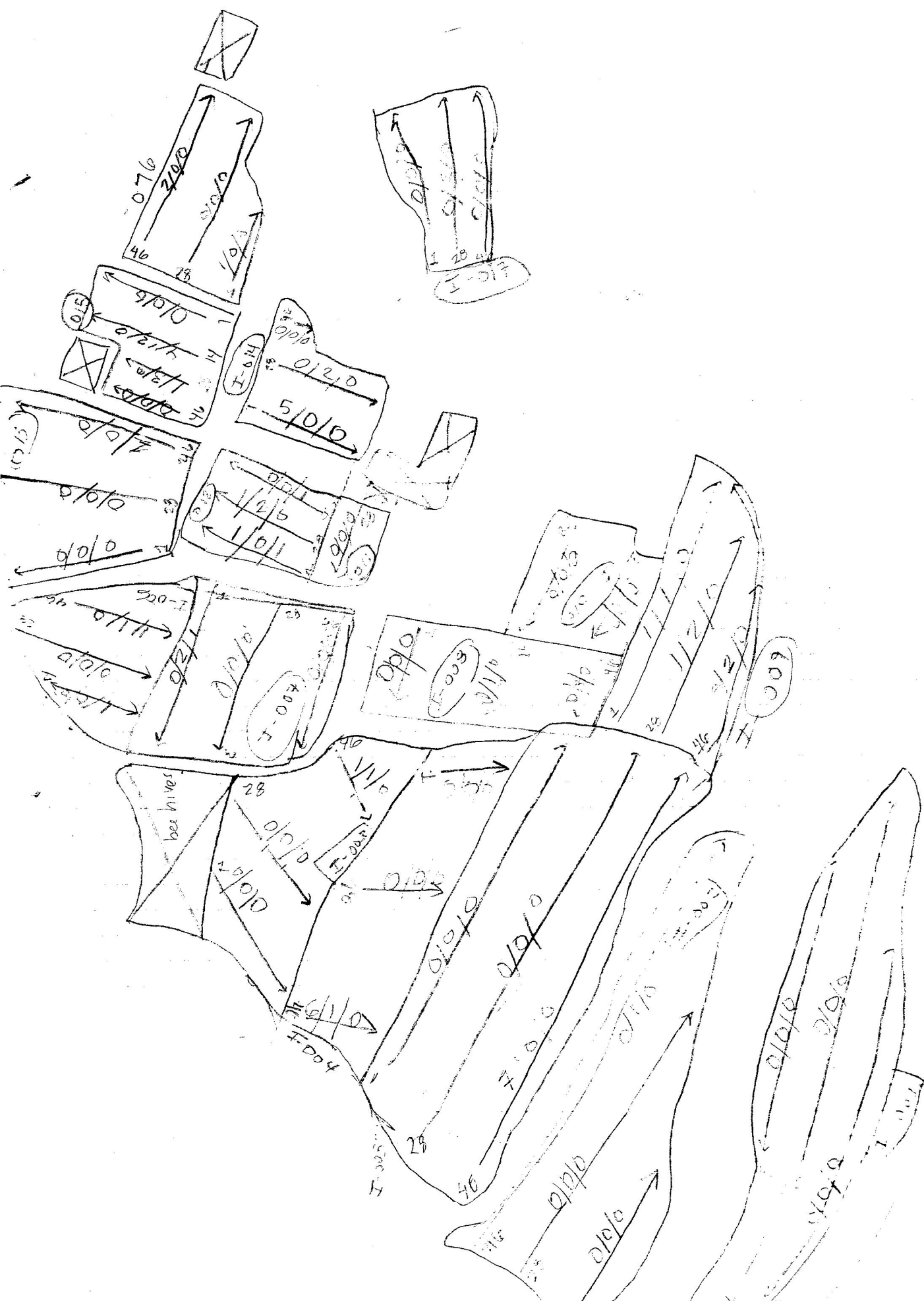
Vegetation: low grass

visibility: 95%

features: upper level to tract 1-003

finds:

0/1/0

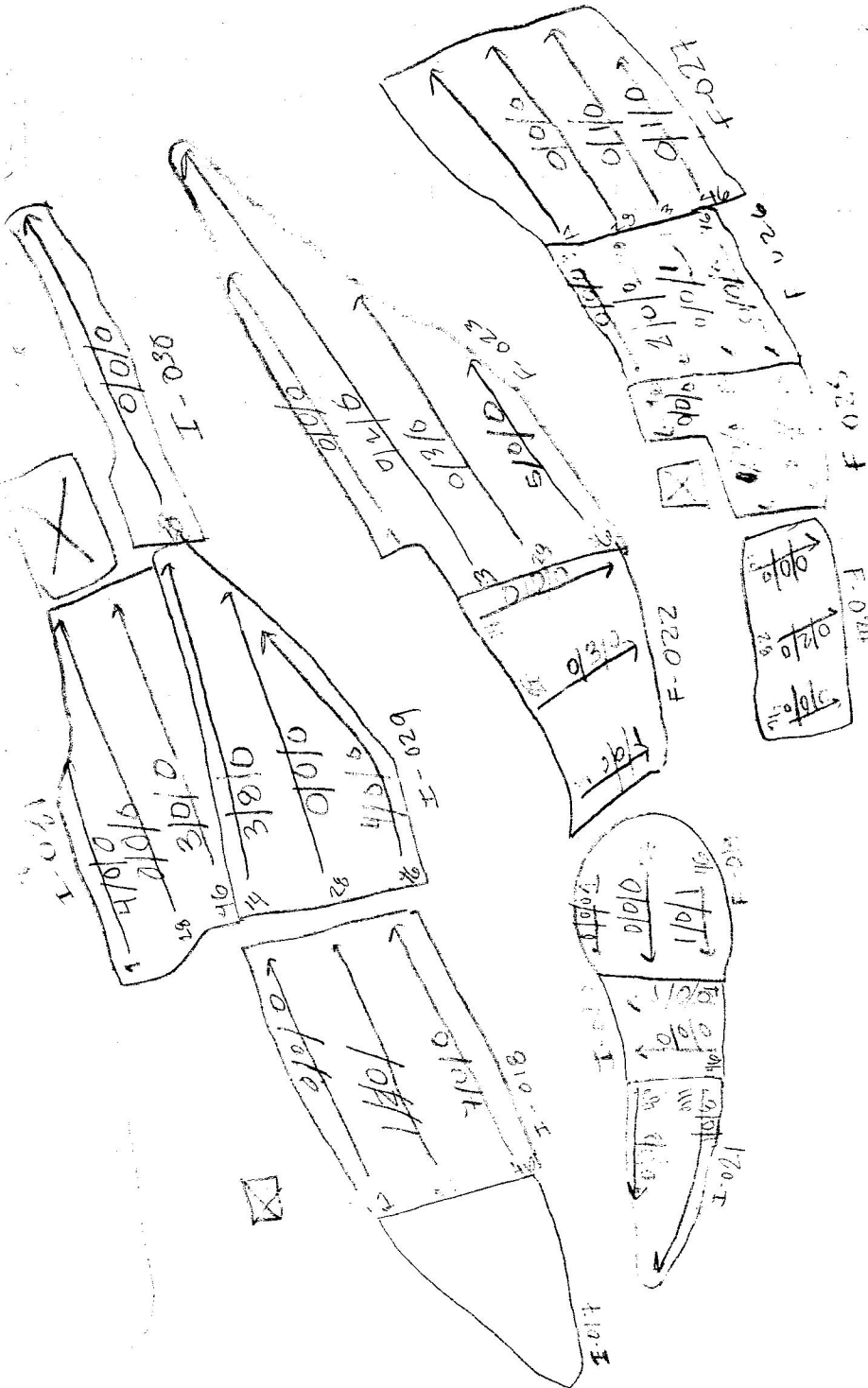
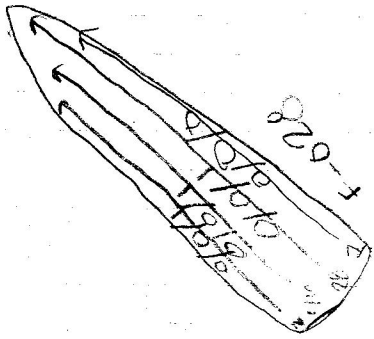


1360
Tract: I-005
Vegetation: 30% cut grass
Features: upper level terrace
GPS: 7/0/0

Tract: I-006
Vegetation: 30% cut grass
Features: upper level terrace
GPS: 2/1/0

Tract: I-007
Vegetation: cut grass
• Visibility: 50%
Features: upper level terrace
Note: the two tiles were modern
GPS: 0/2/1

Tract: I-008
Vegetation: 30% cut grass
Features: upper level terrace



Tract 000

Vegetation: grass, shrubs, etc.

Features: —

Grass: —

Grass: Mostly Modern fields

10/5/0

Grass

Tract 010

Vegetation: grass, shrubs, etc.

Features: —

Grass: —

Grass:

Grass

0/0/0

Tract 011

Vegetation: grass, shrubs, etc.

Visibility: 85%

Features: —

Grass: —

Grass

0/0/0

Tract 012

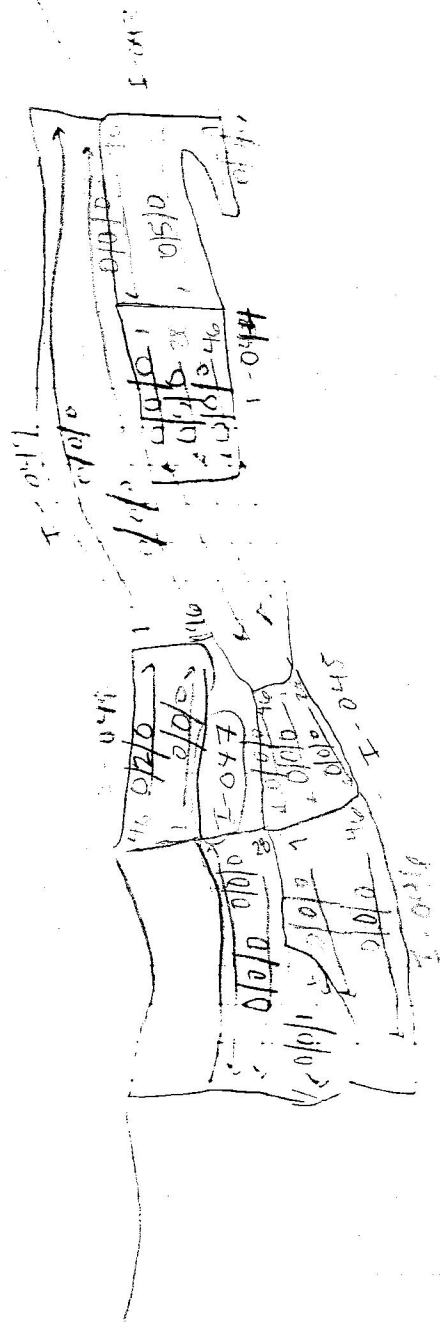
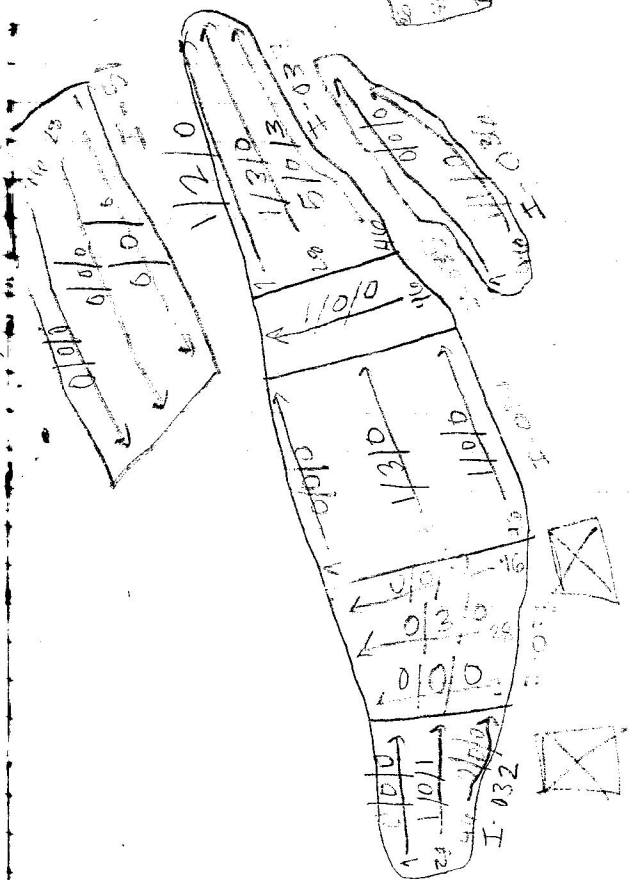
Vegetation: grass, shrubs, etc.

Features: —

Grass: —

Grass: —

2/2/2



Tract: 013

Viso 82.05

11/11/00 - 11/11/00

Features -

Grass - medium

GPS -

1/0/0

Tract: 014

Viso 82.05 for 46 = 2% 95% for 28 and 1

Vegetation: olive trees for 46; played soil for 7m 28

Features -

Grass - medium

GPS -

5/2/0

Tract: I-015

Viso - 85%

11/11/00 - 11/11/00

Features -

Grass - medium

GPS -

5/15/0

Tract: I-016

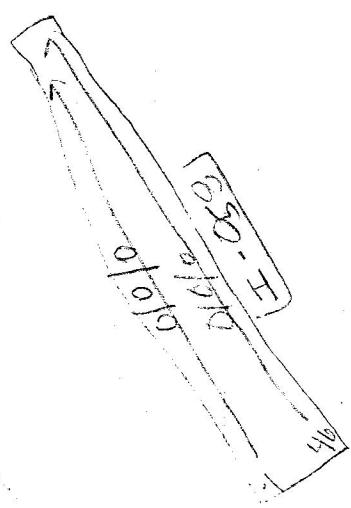
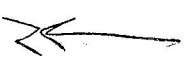
Viso 90%

11/11/00 - 11/11/00

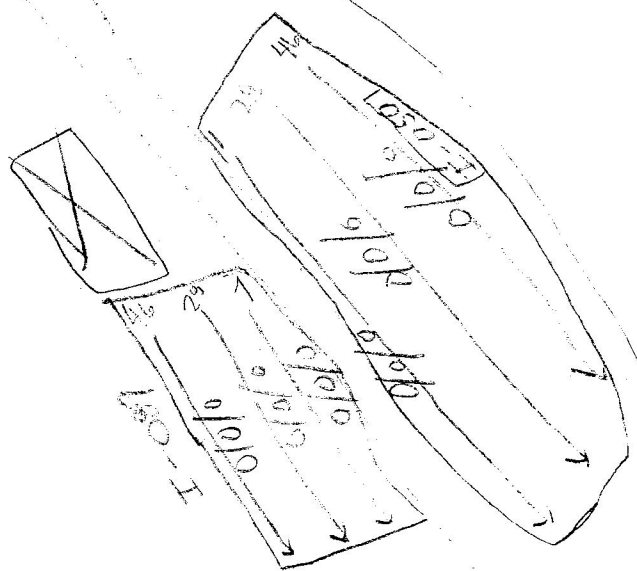
Features -

Grass -

3/0/0



ruge



234

Tract I-017

Vis - 157

Reg - P.H. - P.H.

Structure -

In the only modern, table

Sp -

0/2/0

Tract I-018

Vis - 157

Reg - P.H. - P.H.

Structure -

In the - Modern

8/2/0

Tract I-019

Vis - 157

Reg - P.H. - P.H.

Structure -

In the -

1/0/1

Tract I-020

Vis - 157

Reg - P.H. - P.H.

Structure -

1/0/0

(Linn) Kinn

E-059

01010 01010 01010

118

E-059

E-059

01010 01010 01010

E-052

01010 01010 01010

E-053

01010 01010 01010

E-055

01010 01010 01010

E-057

01010 01010 01010

E-059

01010 01010 01010

E-059

01010 01010 01010

Tract # 021

Vegetation - 100%

Vegetation - 100%

Vegetation -

Vegetation -

Vegetation -

3/0/0

Tract # 022

Vegetation - 100%

Vegetation - 100%

Vegetation -

Vegetation -

Vegetation -

0/3/1

Tract: 0-23

Vegetation for 100% 200% 50% 100% 100% 100% 100% 100%

Vegetation - 100% 100% 100% 100% 100% 100% 100% 100%

Vegetation -

Vegetation -

Vegetation -

5/5/0

Tract # 024

Vegetation - 95%

Vegetation - 95% 100% 100% 100% 100% 100% 100% 100%

Vegetation -

Vegetation - only 100%

Vegetation -

0/2/0

208

I-025

vis: 33%

vegetation: 0

birds: 1

insects: -

GPS:

0/2/0

I-026

vis: 35% - 50%

veg: - 100%

birds:

insects:

GPS:

2/0/1

I-027

vis: 35%

veg: 30% on, 10% off

birds:

insects: 3 dls, 1 large
of 2 small

GPS:

0/2/0

I-028

vis: 100%

veg: onions, plowed soil

birds:

insects: 4 levels of 100%

0/0/5

Tract: 029

Year: 2013

Zone: I

Vegetation: cut grass and tobacco

visibility: 25% for 23° 46', 95% for 14

features: The tract was on two levels of
terracing
funds: -GPS: 0331399
4667050

7/8/0

Tract: 030

Year: 2013

Zone: I

Vegetation: grass and weeds

visibility: 30%

features: -

funds: -

GPS: 03366667
4664860

0/0/0

Tract: 031

Year 2013

Zone: I

Vegetation: cut grass, tobacco, tomatoes, phy:
Mandarin, grapes, etc.

visibility: 10%

features: on an upper level terrace

funds: -

GPS: 03360725
4665185

7/0/0

Tract: 032

Year 2013

Zone: I

Vegetation: onions

visibility: 95%

features: on upper level terrace

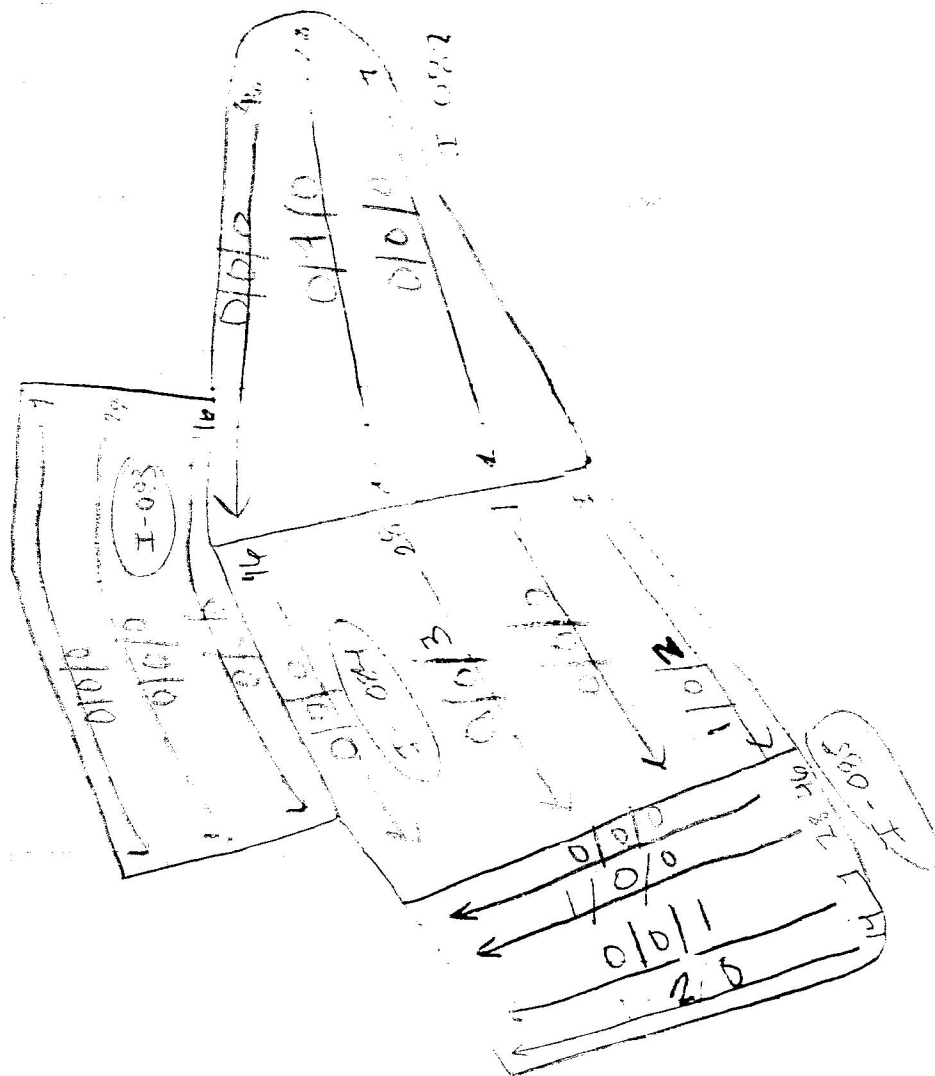
622

Tract: 033	Year: 2013	Zone: I
Vegetation: old woods		
Visibility: 95%		
Features: on upper level terrace		
Finds: - Modern tools		
GPS: 0386195 4665282	0/3/0	

Tract: 034	Year: 2013	Zone: I
Vegetation: woods		
Visibility: 80%		
Features: on an upper level terrace		
Finds: Modern finds		
GPS: 0386247 4665333	2/3/0	

Tract: 035	Year: 2013	Zone: I
Vegetation: old woods		
Visibility: 95%		
Features: on an upper level terrace		
Finds: -		
GPS: 0386248 4665338	1/0/0	

Tract: 036	Year: 2013	Zone: I
Vegetation: woods		
Visibility: 90%		
Features: on terrace below Tract 035		
Finds: - Medieval finds		
1/1/0		

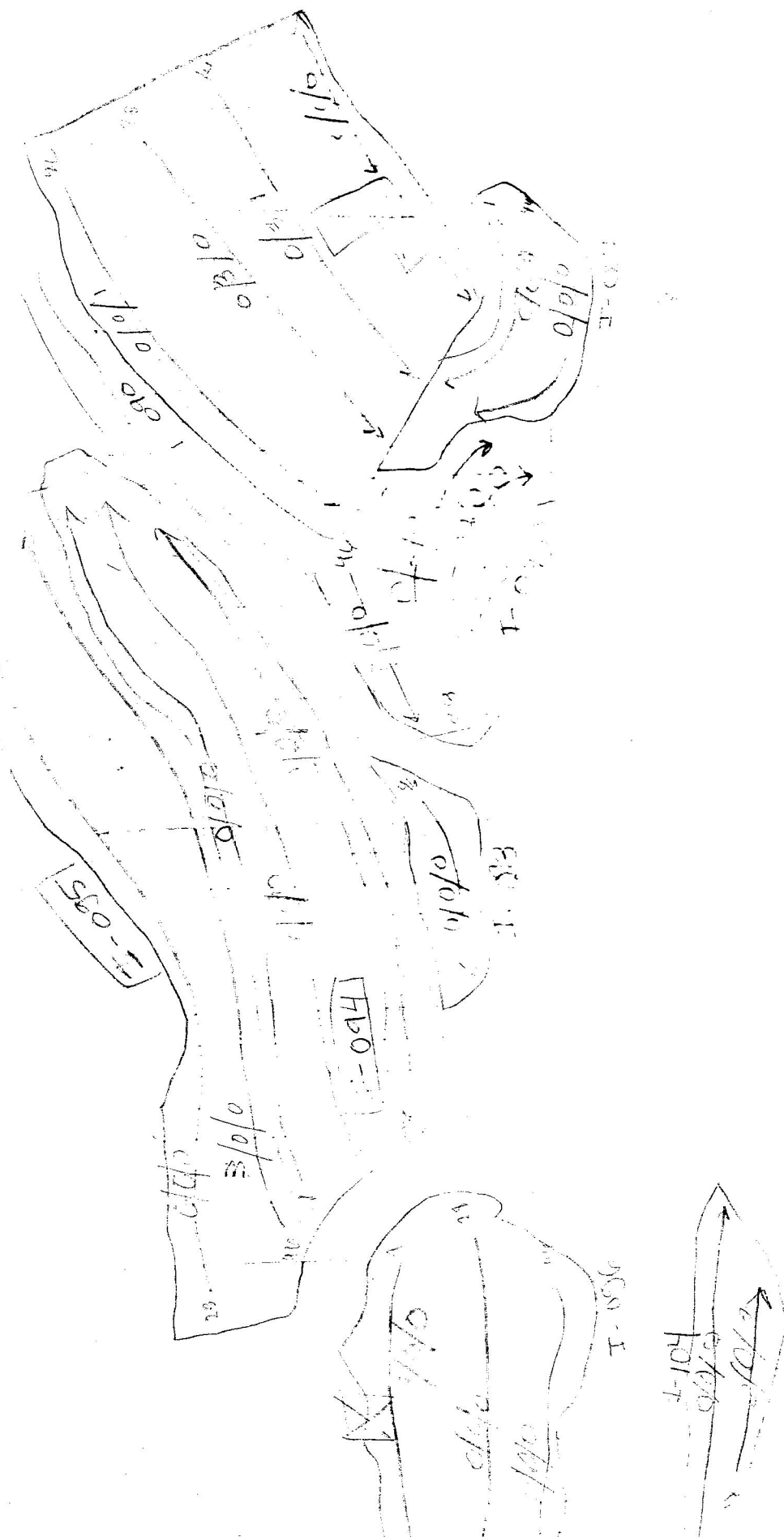


tract: 037	Year 2013	Zone I
Vegetation: low forest old slash area		
visibility: 35% - 95%		
features: on an upper level of terrace		
finds: iron ore found		
GPS: 03860265 4665360	7/5/3	

tract: 038	Year 2013	Zone I
Vegetation: low forest old slash area		
visibility: 15%		
features: on terrace		
finds: —		
GPS: 0386557 4665436	2/0/2 0/0/0	

tract: 039	Year 2013	Zone I
Vegetation: on some (large)		
visibility: 95%		
features: on two levels of terracing		
finds: —		
GPS: 0386333 4665386	4/0/1	

tract: 040	Year 2013	Zone I
Vegetation: tobacco		
visibility: 95%		
features: lower level terrace		
finds: —		
6286260		



Tract: 041	Year 2013	Zone I
Vegetation: onions Visibility: 35% Features: two levels of terracing Finds: Mainly Modern tile GPS: 0386412 4665413		
		1/3/0

Tract: 042	Year 2013	Zone I
Vegetation: onions, yucca Visibility: for 466 = 60%, for 468 = 20% Features: 3 levels of terracing Finds: — GPS: 0386430 4665424		
		10/0/0

Tract: 043	Year 2013	Zone I
Vegetation: onions Visibility: 90% Features: 2 levels of terracing Finds: — Modern tile GPS: 0386454 4665424		
		0/5/0

Tract: 044	Year 2013	Zone I
Vegetation: onions Visibility: 20% Features: on upper level terrace Finds: — GPS: 0386454 4665424		
		0/5/0

Handwritten notes in a curved shape, possibly a signature or initials, including the date 10/10.

Handwritten notes in a curved shape, including the date 10/10 and the number 46.

Handwritten notes in a curved shape, including the date 10/10 and the number 46.

Handwritten notes in a rectangular shape, including the date 10/10 and the number 46.

Handwritten notes in a rectangular shape, including the date 10/10 and the number 46.

Tract 045

Year 2013

Zone I

Vegetation: grasses

visibility: 40%

features: 2 levels of terracing

finds: —

GPS: 0386376
4665410

0/0/0

Tract: 046

Year 2013

Zone I

Vegetation: on site

visibility: 40%

features: 2 levels of terracing (built in
also GPS)

finds: —

GPS: 0386376
4665392

0/0/0

Tract: 047

Year 2013

Zone I

Vegetation: brush and some grasses

visibility: 90%

features: 2 levels of terracing

finds: one, 2nd site

GPS: 0386353
4665293

0/0/1

Tract: 048

Year 2013

Zone I

Vegetation: olive trees and grasses

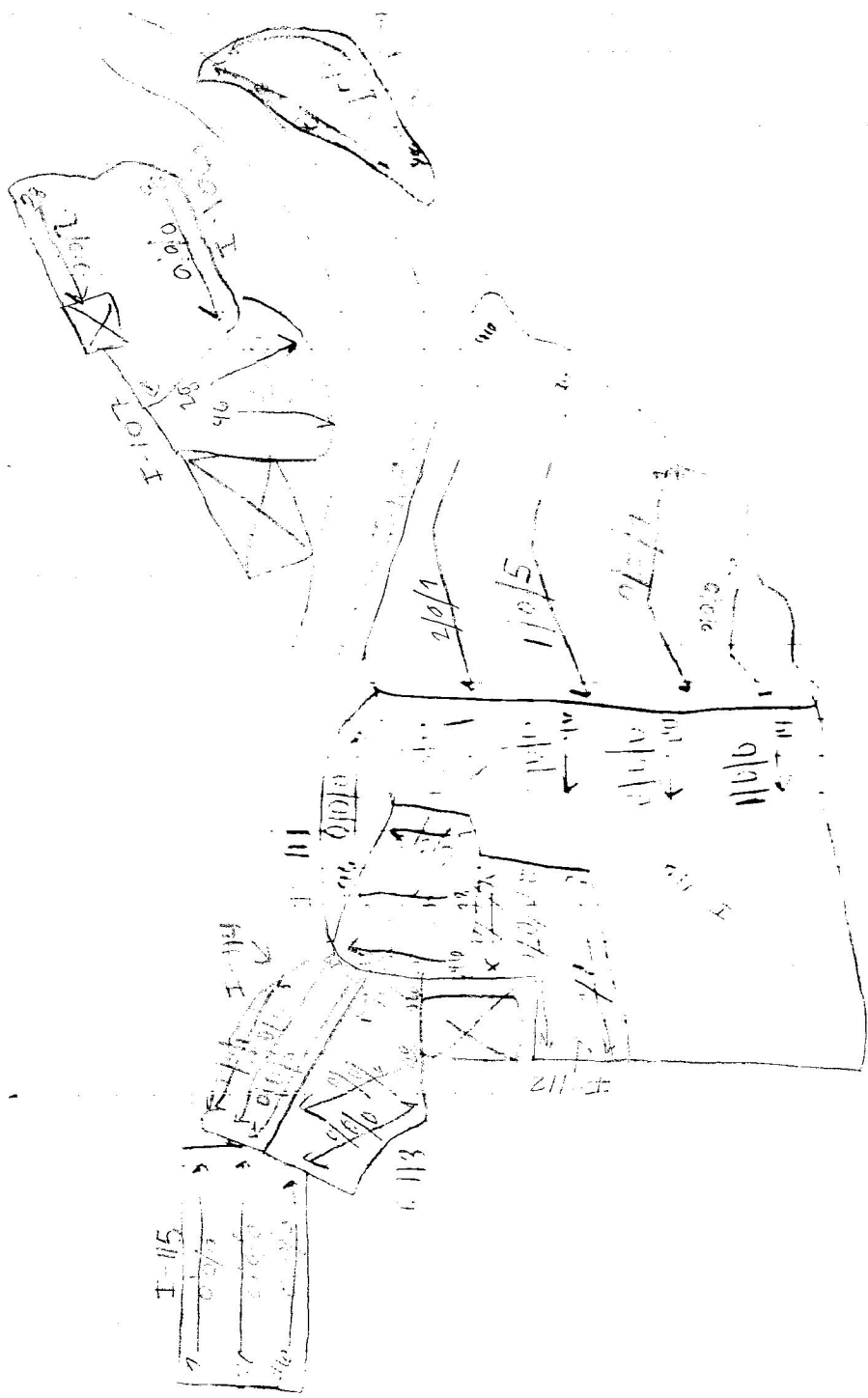
visibility: first half of field was 90%, / second
half was 75%

features: on terraced

finds: —

GPS: 0386353
4665293

0/2/0

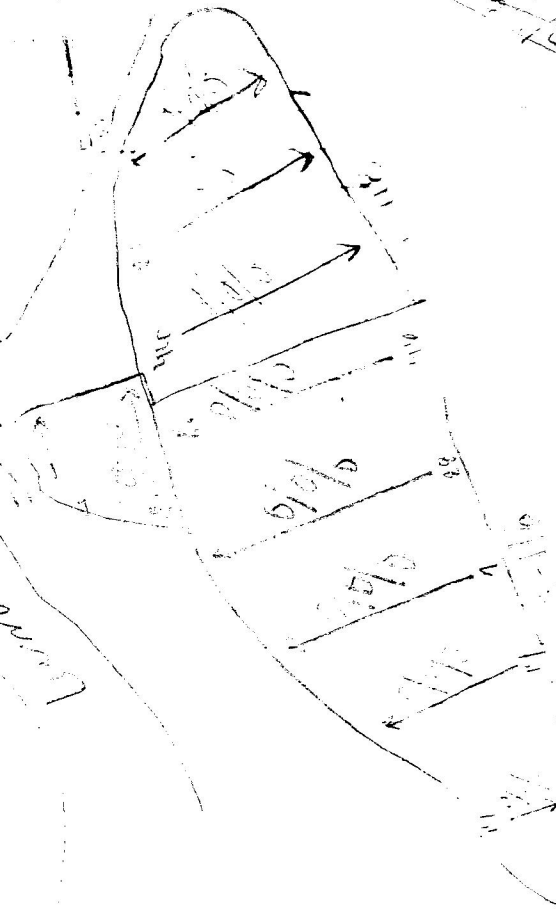
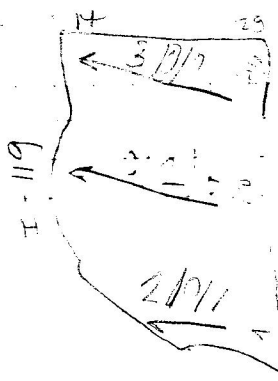
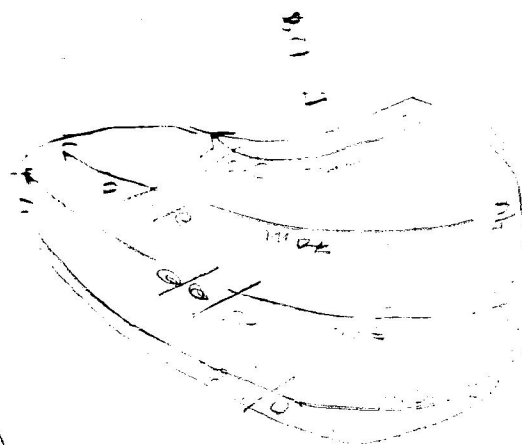
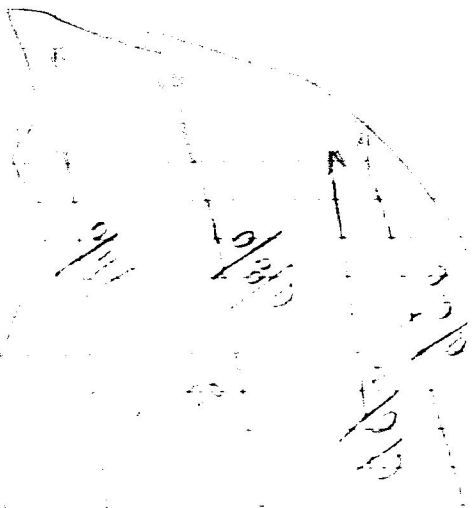
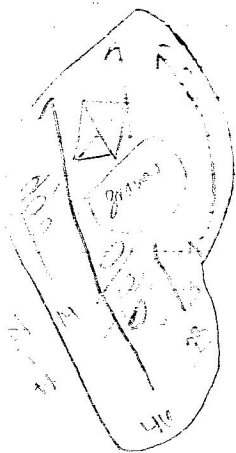
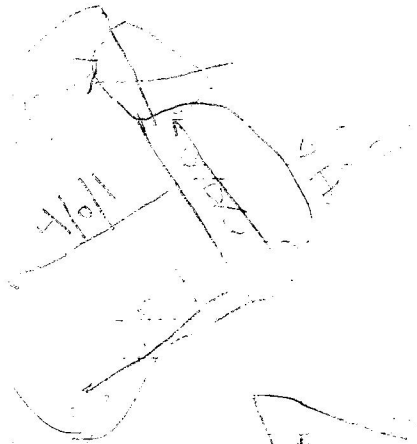


tract: 049	Year 2013	Zone I
vegetation: on road, dry + little visibility: 35-90% features: on terracing (upper level) funds: - GPS: 038154110 4665455		
		0/0/0

tract: 050	Year 2013	Zone I
vegetation: on road, dry + little grass visibility: (low) 20% features: two levels of terracing near road funds: - GPS: 0386351 4665467		
		0/0/0

tract: 051	Year 2013	Zone I
vegetation: 23m trap (old); short grass visibility: 65% features: Tract located west of tract #037 on the opposite side of the road funds: - GPS: 0381260 4665455		
		0/0/0

tract: 052	Year 2013	Zone I
vegetation: Poles, some moss and grass visibility: (poor) 10% features: lowest level terrace near road funds: - GPS: -		
		0/0/0

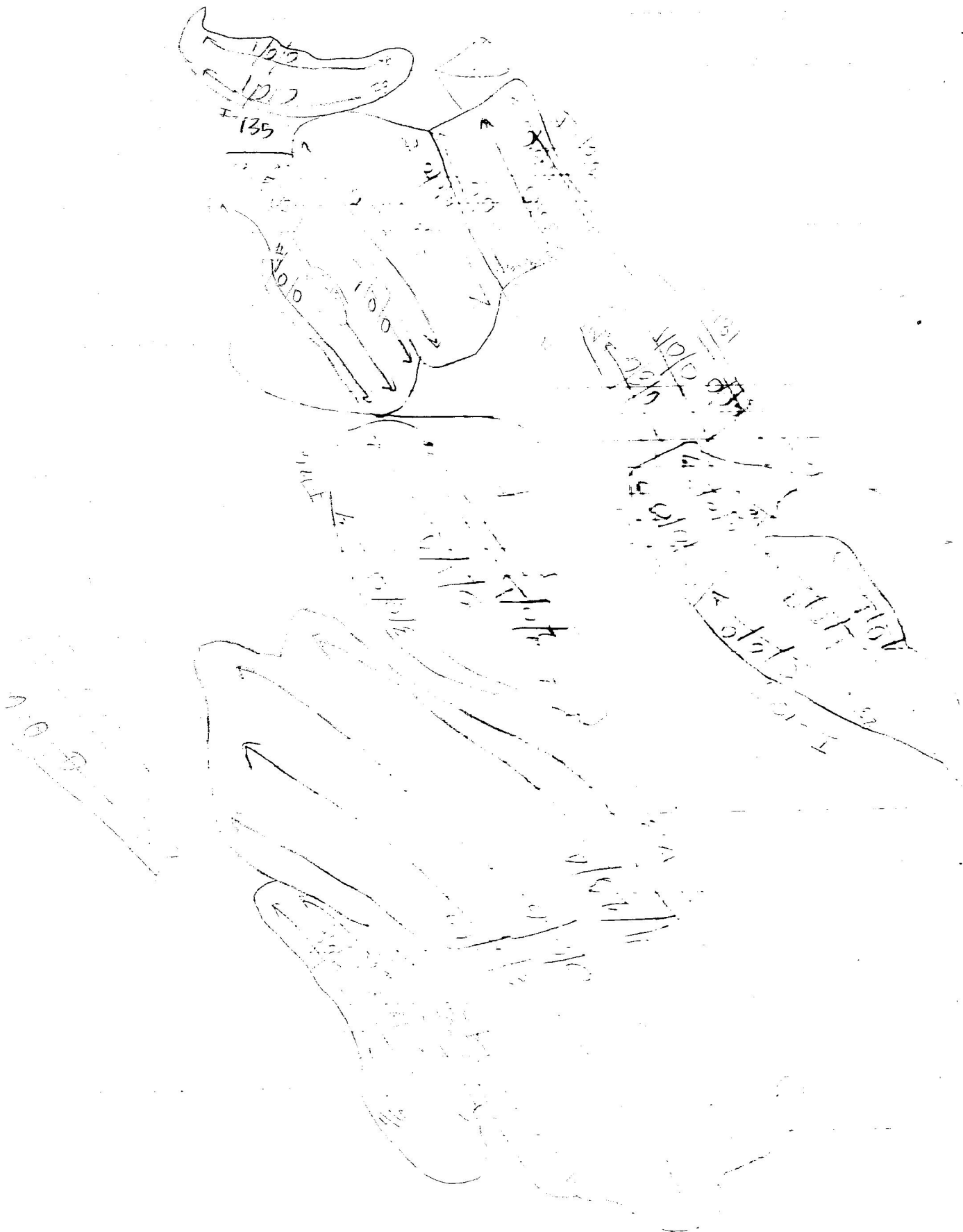


tract 053	Year 2013	Zone I
vegetation: on one end weeds (4 ft. tall) visibility: 25% features: on terrace above tract 052 finds: — GPS: 0386519 4665521		
		0/0/0

tract 054	Year 2013	Zone I
vegetation: little on one visibility: 90% features: on terrace above I-055 finds: — GPS: 0386501 4665330		
		0/0/0

tract: 055	Year 2013	Zone I
vegetation: brush and weeds visibility: 50% features: on a terrace below tract 054 finds: — GPS: 0386516 4665530		
		0/1/0

tract: 056	Year 2013	Zone I
vegetation: onions visibility: 25% features: on an upper level terrace finds: — GPS: 0386516 4665530		
		0/1/0



tract: 057

Year 2013

Zone I

Vegetation: little onions

visibility 90%

features: on or upper level terrace

finds: -

GPS: 0386478
4665539

0/0/0

tract: 058

Year 2013

Zone I

Vegetation: little onions, green weeds

visibility: 50%

features: on upper level terrace NW of road

finds: -

GPS: 0386468
4665560

0/0/0

tract: 059

Year 2013

Zone I

Vegetation: 9/100s, white, rose

visibility: 85%

features: on upper level terrace NW of road

finds: -

GPS: 0386576
4665626

0/0/0

tract: 060

Year 2013

Zone I

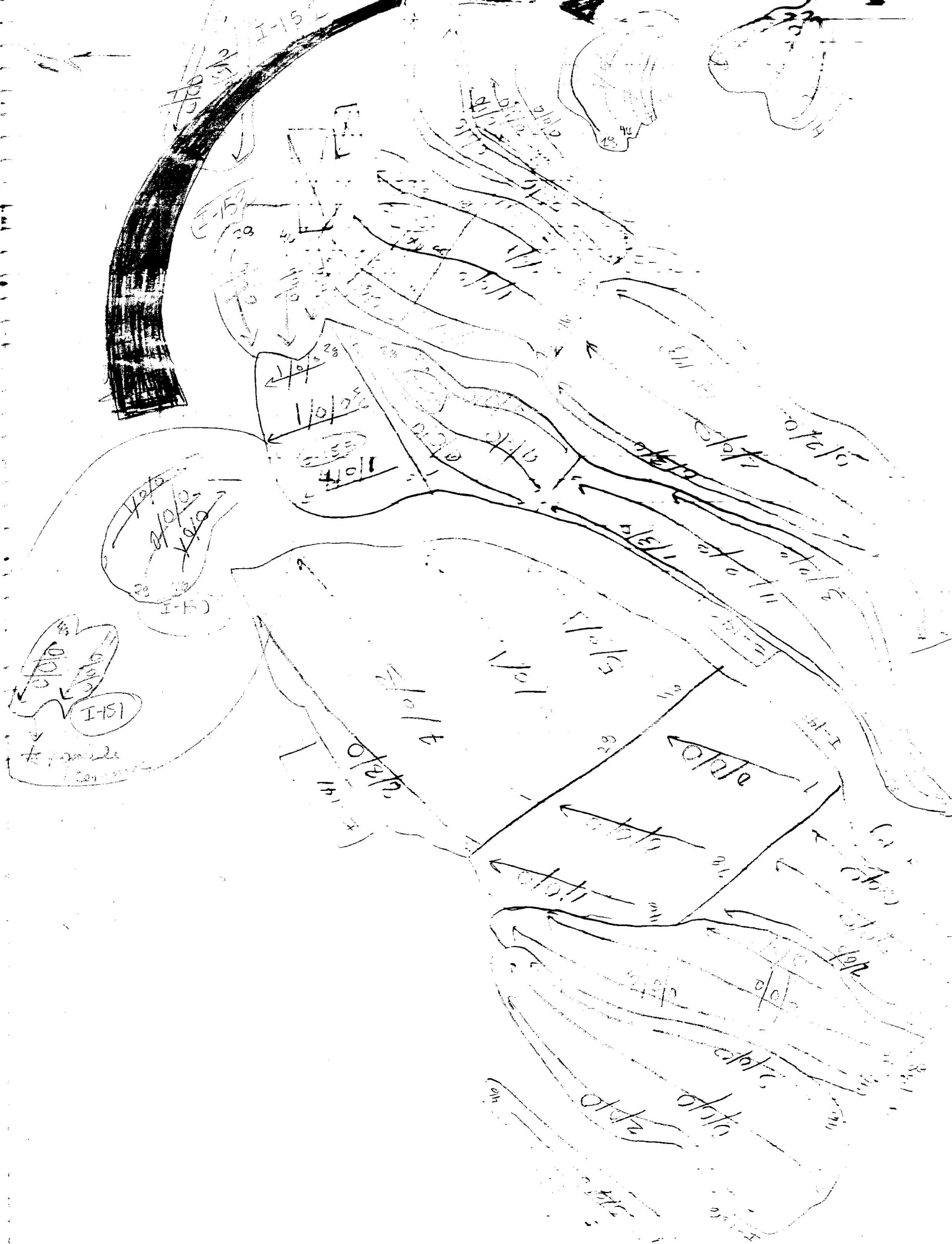
Vegetation: onions and cut grass

visibility: 1/2 road = 80% ground = 5%

features: terrace SE of road

finds: ✓

0/0/0



tract: 061 Year 2013 Zone I

vegetation: cut grass

visibility: 5%

features: terrace above road I only

finds: -

GPS: 0386546
46651256

0/0/0

tract: 062 Year 2013 Zone I

vegetation: dense (Dense)

visibility: 98%

features: terracing nearest the road (lowest)

finds: -

GPS: 0386645
4665730

0/0/0

tract: 063 Year 2013 Zone I

vegetation: short, cucumbers melons

visibility: 80%

features: terrace nearest road (lowest)

finds: -

GPS: 0386670
4665753

1/0/0

tract: 064 Year 2013 Zone I

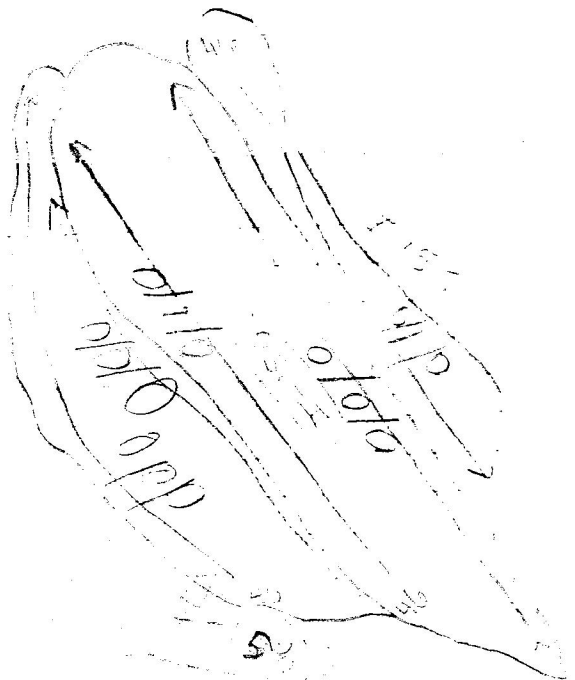
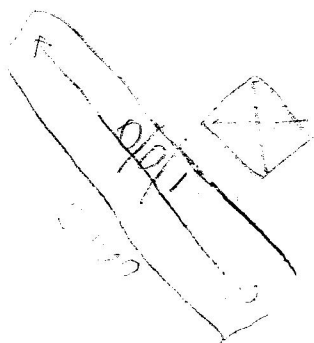
vegetation: olive trees, cactus

visibility: 30%

features: lowest level terrace north
trout side

finds: -

1/0/0

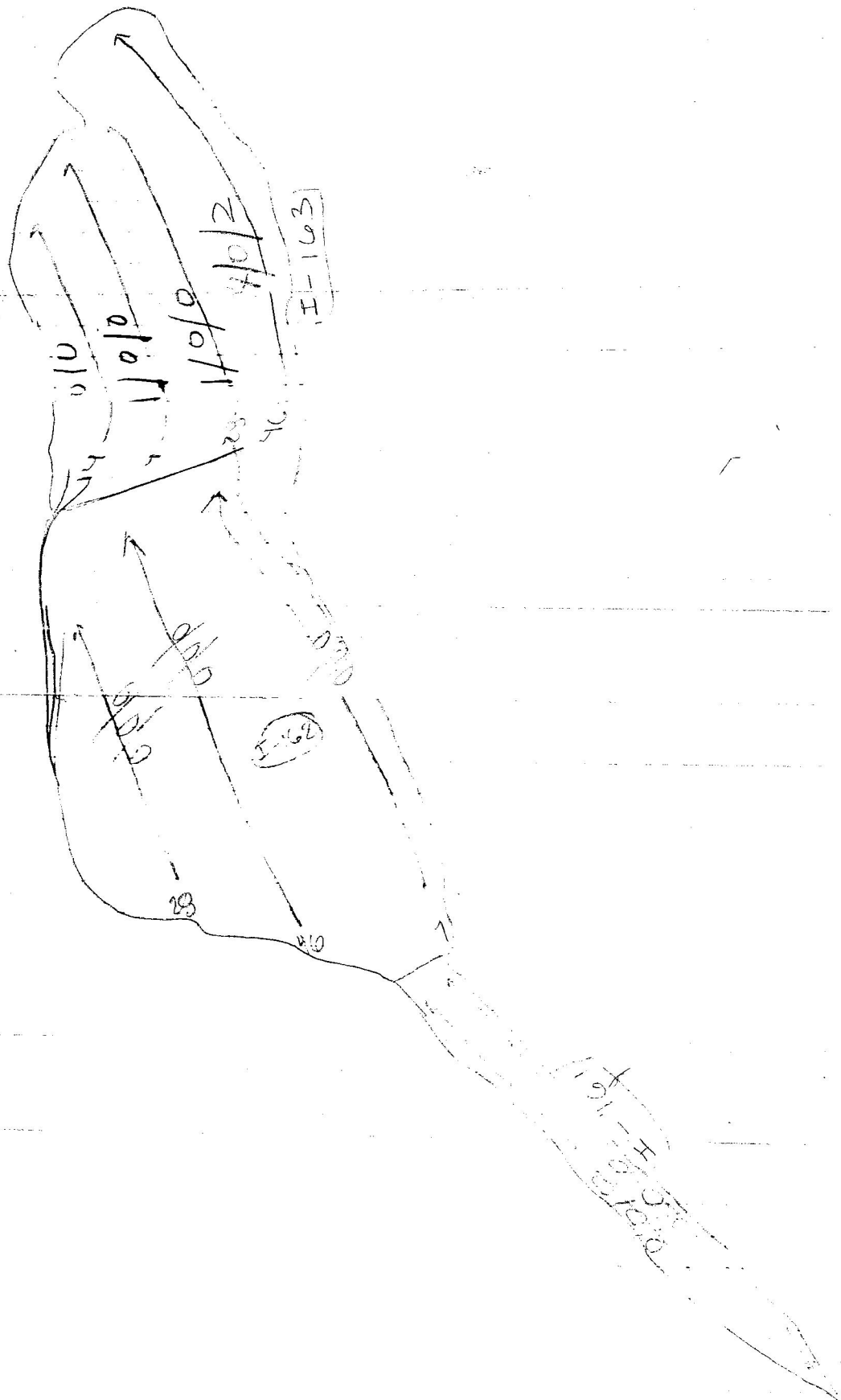


tract: 065 year 2013 Zone I
 Vegetation: little onions, blueberries, snow
 visibility: 90%
 features: terrace nearest the road.
 finds: -
 GPS: 0386767
 4665799 1/0/1

tract: 066 year 2013 Zone I
 Vegetation: little onions, blueberries, snow
 visibility: 100%
 features: terrace above tract 065
 finds: - Many lithics found. Also a
 comb was in the trash
 GPS: 0386723
 4665901 5/0/21 + 4 = 25

tract: 067 year 2013 Zone I
 Vegetation: little onions
 visibility: 100%
 features: terrace above tract 066
 finds: -
 GPS: 0386735
 4665851 2/0/1

tract: 068 year 2013 Zone I
 Vegetation: onions, blueberries, little
 visibility: 75-90%
 features: on terrace above tract 066
 finds: - Molar & 1/2
 11/0/1



tract: 069 Year 2013 Zone I
 Vegetation: baby corn
 visibility: 90%
 features: on 2 levels of terracing near the street
 finds: - only modern tile found
 GPS: 0386806
 4665847 0/3/1

tract: 070 Year 2013 Zone I
 Vegetation: ~~onions~~ onions
 visibility: 85%
 features: upper level terrace east of the finds.
 GPS: 0387495
 4666181 2/0/0

tract: 071 Year 2013 Zone I
 Vegetation: onions
 visibility: 85%
 features: continuation of tract I-070
 finds: - at End of tract I-071, across the River, the rocks have a green and redish coloration (photo)
 GPS: 0387497
 4666234 0/0/0

tract: 072 Year 2013 Zone I
 Vegetation: tobacco; onions
 visibility: 100% for 40-50; 40% for 1
 features: tract located on two levels of terracing
 finds: -
 0/0/0

0/0/0
0/0/0
0/0/0

166

0/0/0
0/0/0
0/0/0

166

0/0/0
0/0/0
0/0/0

166

0/0/0
0/0/0
0/0/0

166

0/0/0
0/0/0
0/0/0

166

0/0/0
0/0/0
0/0/0

0/0/0
0/0/0
0/0/0

166

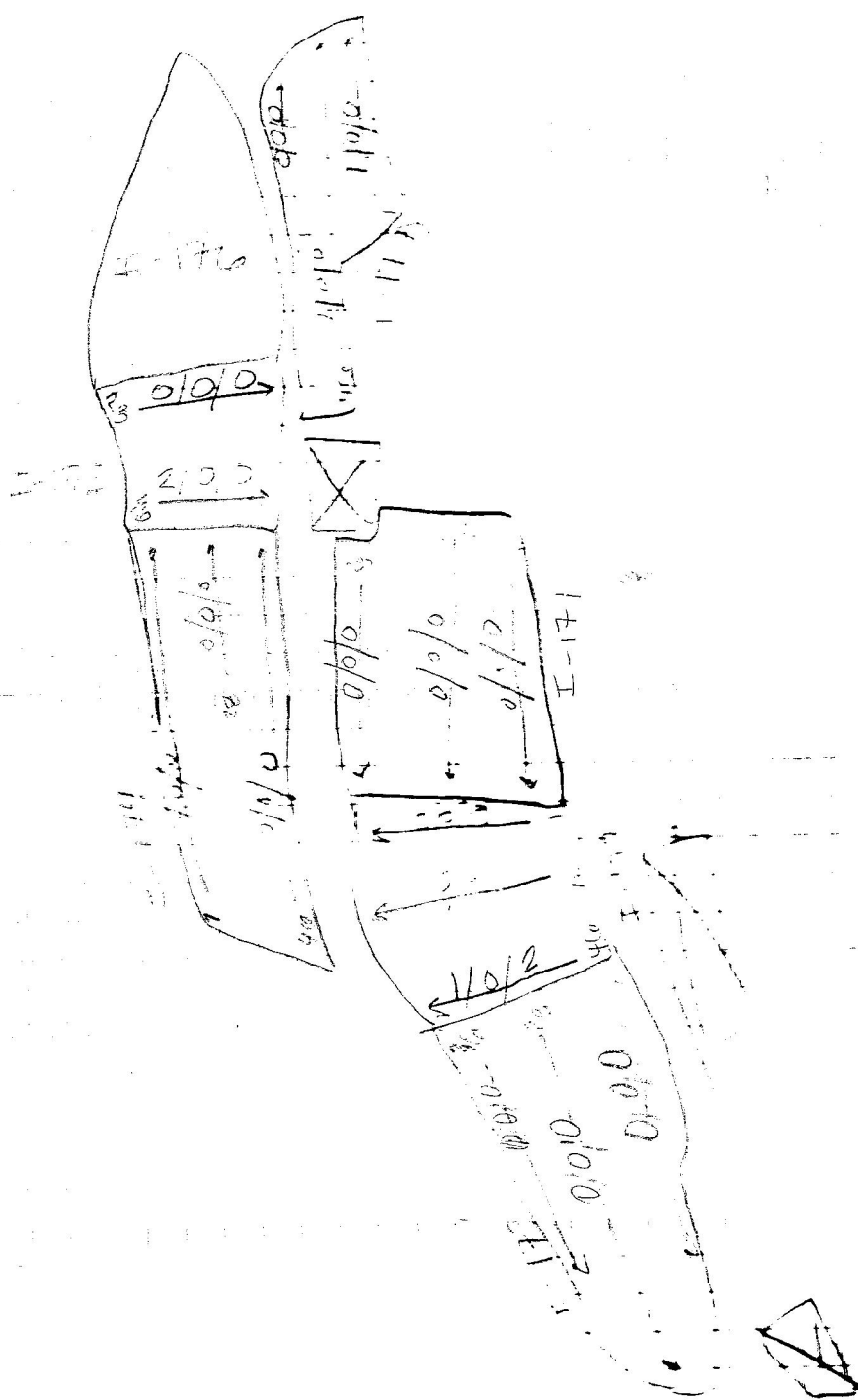
tract: 073	Year 2013	Zone I
Vegetation: onions, olive trees, corn		
visibility: 50%		
features: trace on 500 terraces		
finds: -		
GPS: 0387433 4666623		0/0/0

tract: 074	Year 2013	Zone I
Vegetation: onions, olive trees, corn		
visibility: 100% for find of 2000, 60% for features		
features: tract located on 5 levels of terracing		
finds: possible on 400 prehistoric		
GPS: 0337421 4666624		[(-072 - I-074) good for 1/0]

tract: 075	Year 2013	Zone I
Vegetation: little, onions		
visibility: 05%		
features: evidence north of road and		
finds: -		
GPS: 0307347 4666221		1/0/0

tract: 076	Year 2013	Zone I
Vegetation: onions		
visibility: 100%		
features: terrace north of road		
finds: - one tile was modern		

11 ↑



tract: 077

year: 2013

zone I

vegetation: OMERS

visibility: 85%

features: tract had a concrete wall running
along the Northern side.GPS: 0357060
4666135

0/0/0

tract: 078

year: 2013

zone I

vegetation: OMERS

visibility: 85%

features: continuation of tract 077

finds: - Modern

GPS: 0357009
4666074

2/4/0

tract: 079

year: 2013

zone I

vegetation: OMERS, OMERS

visibility: 85%

features: lower level terrace below

finds: - tract I-078.

GPS: 0356983
4666020

0/0/0

tract: 080

year: 2013

zone I

vegetation: OMERS

visibility: 85-100%

features: on the levels of increasing soil

finds: -

0/0/0

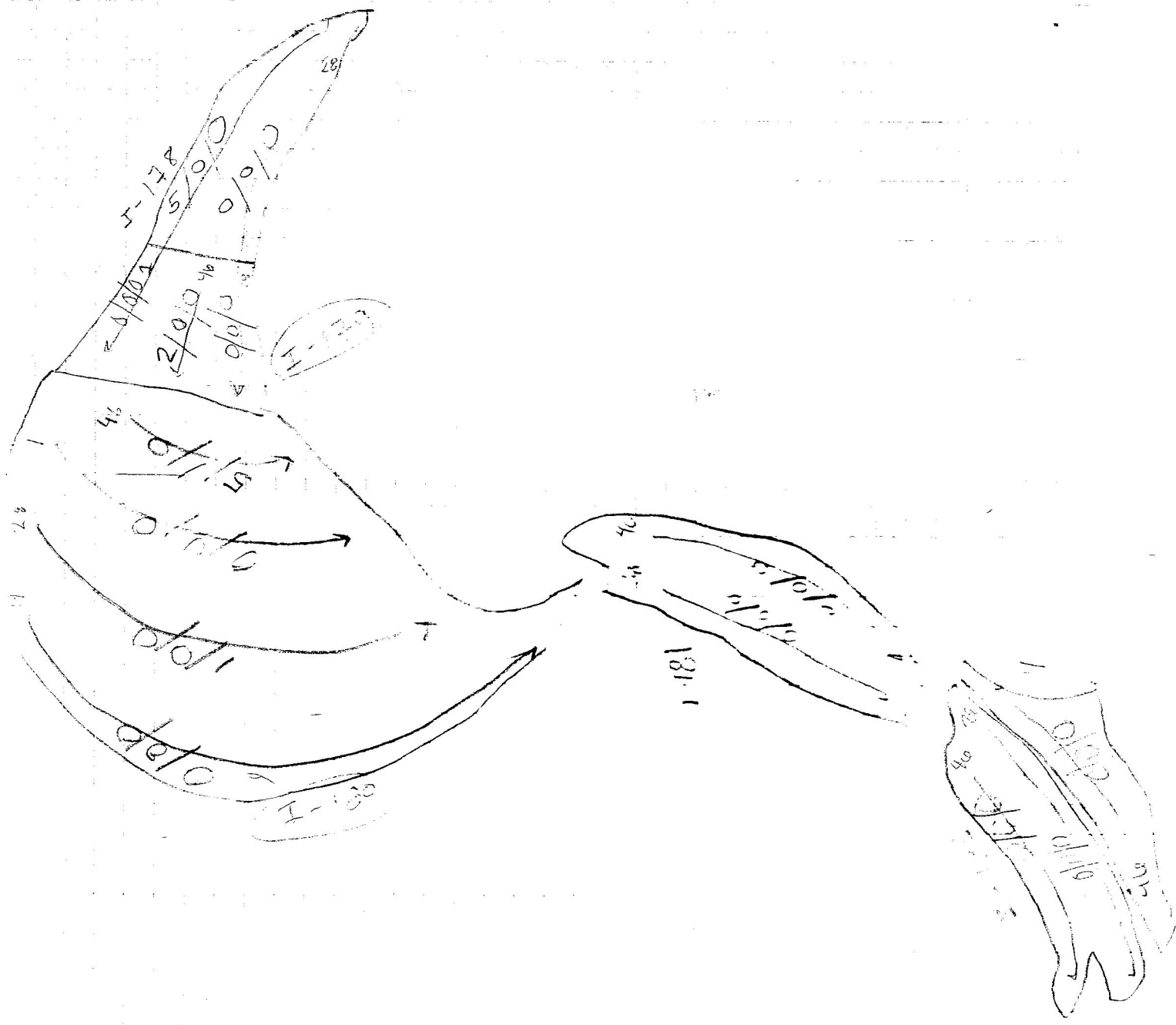
tract: 081 Year 2013 Zone I
 Vegetation: little onions, poplars
 visibility: 60%
 features: two levels of terracing, dirt of
 ground -
 GPS: 0386879
 4665900 1/0/1

tract: 082 Year 2013 Zone I
 Vegetation: more dense trees
 visibility: 40%
 features: terracing, near house
 birds: -
 GPS: 0386879
 4665909 0/7/0

tract: 083 Year 2013 Zone I
 Vegetation: dense trees, grass
 visibility: 5%
 features: two levels of terracing
 birds: -
 GPS: 0386793
 4665906 0/0/0

tract: 084 Year 2013 Zone I
 Vegetation: dense, open
 visibility: 100%
 features: dirt of ground, 2012
 birds: many birds found
 GPS: 0386793
 4665906 1/0/05

NR



tract: 095 Year 2013 Zone I

Vegetation: 20%

visibility: 25%

features: -

finds: prehistoric

GPS: 03807710
4665359

2/2/1

tract: 096 Year 2013 Zone I

Vegetation: -

visibility: 100%

features: low terraces near the river

finds: -

GPS: 0380706
4665746

0/0/0

tract: 097 Year 2013 Zone I

Vegetation: 01%

visibility: 100%

features: low terraces obs. 1-036

finds: -

GPS: 0380735
4665724

0/0/0

tract: 098 Year 2013 Zone I

Vegetation: 01%

visibility: 100%

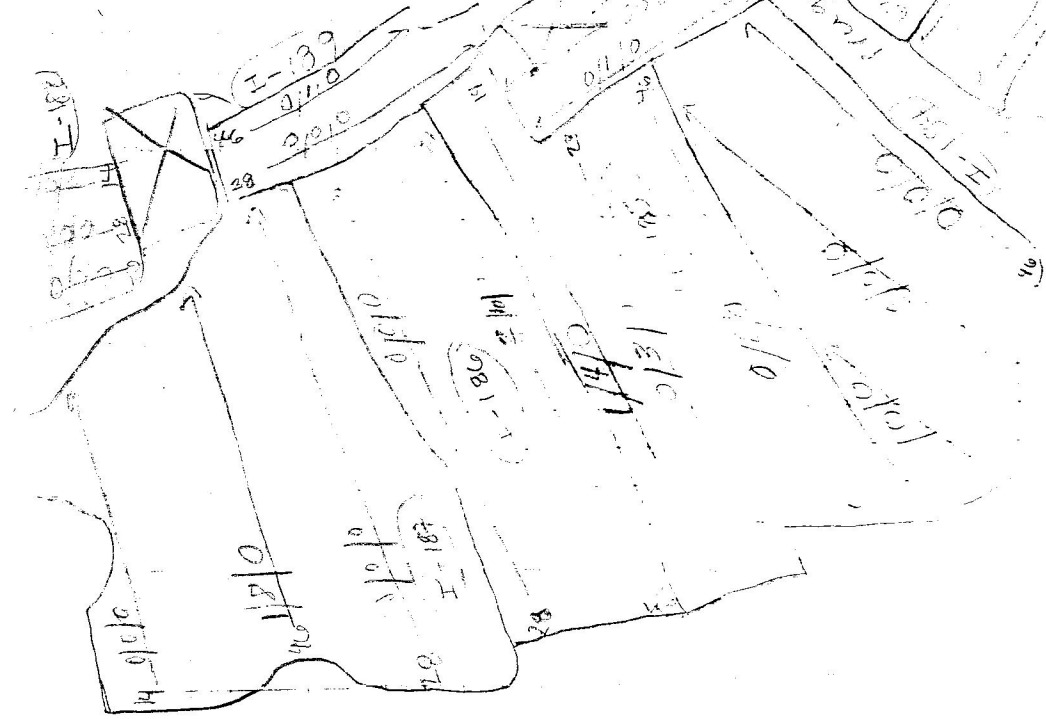
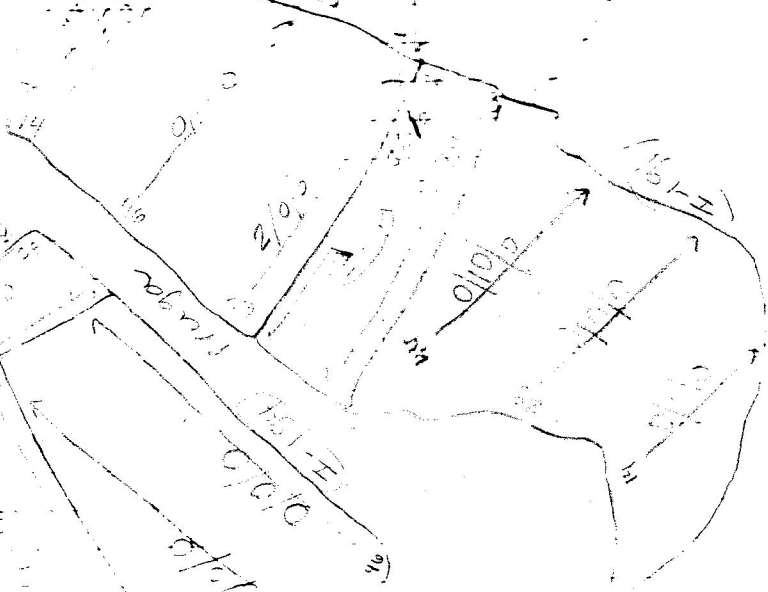
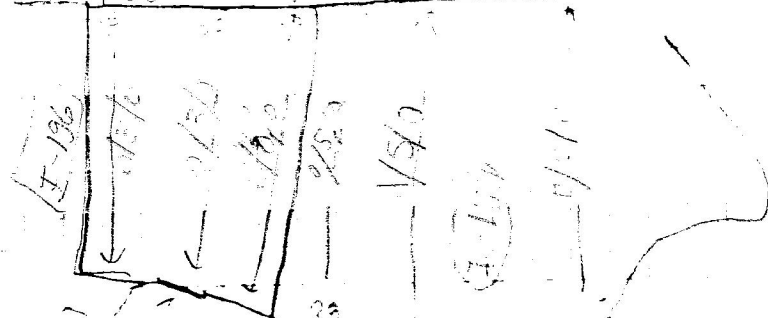
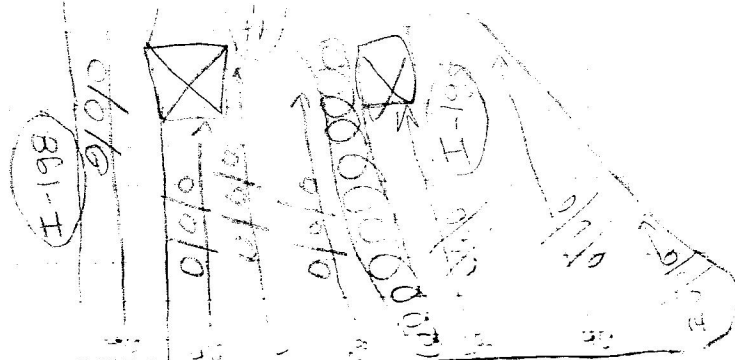
features: low terraces obs. 1-036

finds: -

GPS: 0380735
4665724

0/0/0

22



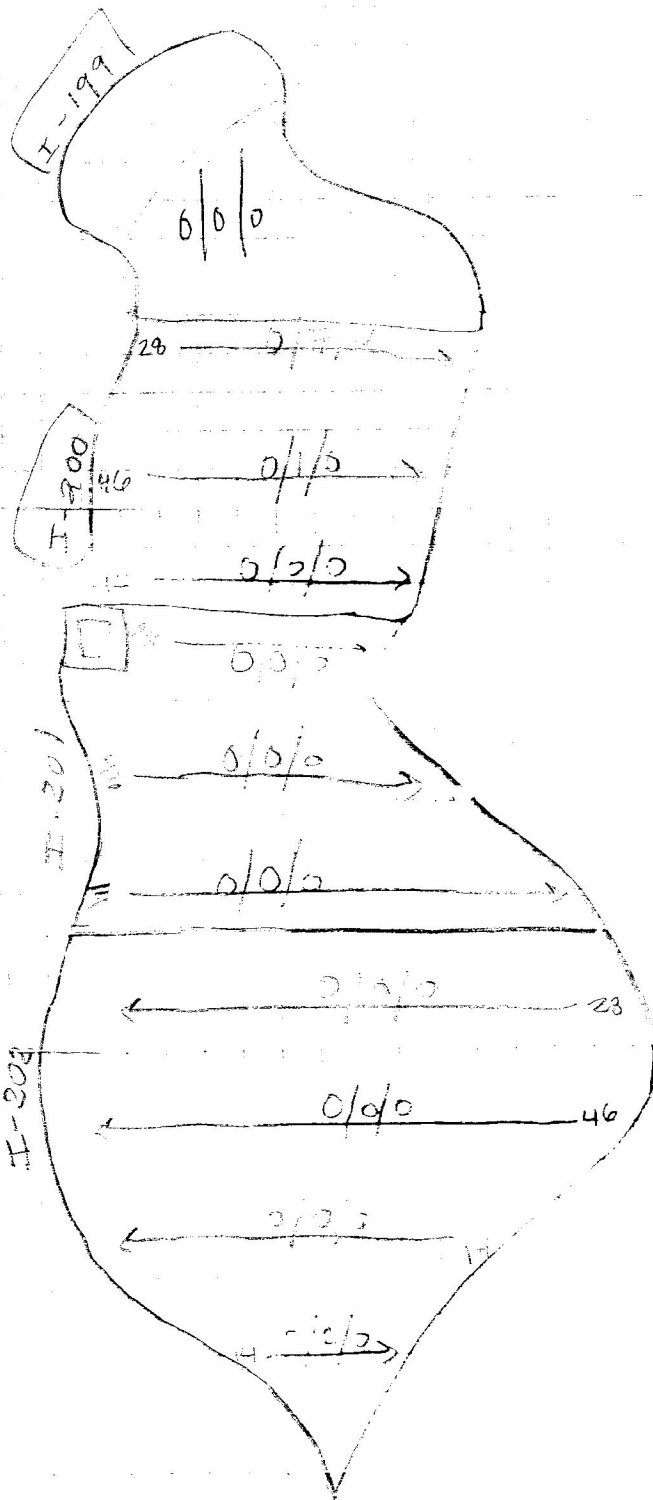
tract 089 Year 2013 Zone I
 Vegetation: grass and old olive trees
 visibility 50%
 features: tract North of the road and across
 the road from the old olive trees
 finds: —
 GPS: 3536336
 4665478
 0/0/0

tract 090 Year 2013 Zone I
 Vegetation: old olive trees
 visibility 85%
 features: A house was in the path of I
 located on a terrace SE of the road.
 finds: —
 GPS: 0347698
 4666536
 0/6/2

tract 091 Year 2013 Zone I
 Vegetation: old olive trees
 visibility 80%
 features: small terrace above river with upland
 olive trees
 finds: —
 GPS: 0388409
 4666507
 0/0/0

tract 092 Year 2013 Zone I
 Vegetation: olive trees, grass, olive
 visibility: 95%
 features: 3 levels of terracing
 finds: —
 0/2/0

N



tract: 093 year 2013 Zone I

vegetation: grass

visibility: 50%

features: upper level fence near road.

birds: -

GPS: 03886034
4666503

0/0/0

tract: 094 year 2013 Zone I

vegetation: grass

visibility: 20%

features: lower level fence near the road

birds: -

GPS: 0388638
4666553

0/0/0

tract: 095 year 2013 Zone I

vegetation: grass, some small plants

visibility: 50%

features: some fence

birds: -

GPS: 0388634
4666551

3/0/0

tract: 096 year 2013 Zone I

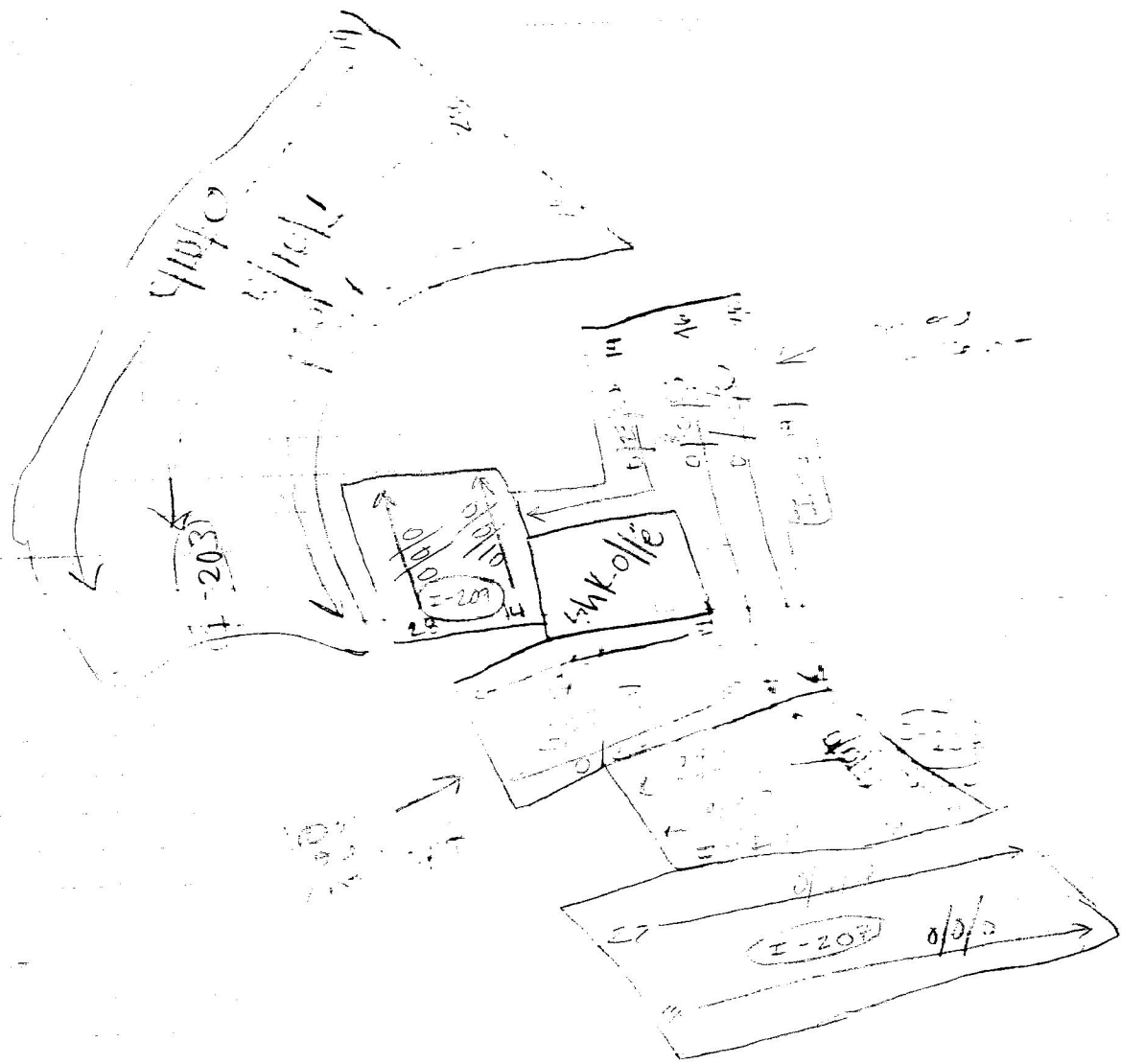
vegetation: dirt, some grass

visibility: 100% / 100% / 100%

features: up and down near house

birds: -

1/0/0



tract: 097	Year: 2013	Zone: I
Vegetation: grass and weeds, tall grass, shrubs		
visibility: 100%		
features: upper level terrace		
birds: -		
GPS: 0353430 1010526		0/0/0

tract: 098	Year: 2013	Zone: I
Vegetation: grass and weeds, shrubs, tall grass		
visibility: 100%		
features: terrace		
birds: -		
GPS: 0387445 1010527		0/0/0

tract: 099	Year: 2013	Zone: I
Vegetation: grass and weeds, tall grass, shrubs		
visibility: 95%		
features: terrace near road		
birds: -		
GPS: 0357372 1010526		0/0/0

tract: 100	Year: 2013	Zone: I
Vegetation: grass and weeds		
visibility: 25%		
features: terrace near the road		
birds: -		
GPS: 0357372 1010526		0/0/0

tract: 101 year 2013 zone I

vegetation: grass

visibility: 5'

features: large tree

finds: -

GPS: - * on page 328 *

tract: 102 year 2013 zone I

vegetation: dirt/grass

visibility: 5'

features: large tree

finds: -

GPS: 0203270
4556460

0/0/0

tract: 103 year 2013 zone I

vegetation: dirt/grass

visibility: 5'

features: large tree near the road / continuation

finds: -

GPS: 0203250
4556444

0/0/0

tract: 104 year 2013 zone I

vegetation: dirt/rocks

visibility: 100'

features: Lemna

finds: -

GPS: 0203250
4556444

0/0/0

tract: 10	Year 2013	Zone I
Vegetation: grass visibility: 50% features: terrace above road finds: - GPS: 03888936 4666475		
		0/0/0

tract: 105	Year 2013	Zone I
Vegetation: grass visibility: 100% features: two levels of terracing finds: - GPS: 0388286 4666472		
		0/0/0

tract: 106	Year 2013	Zone I
Vegetation: grass and weeds visibility: 50% features: Hike in the middle of zone tract. upper level terrace finds: - GPS: 038 4666472		
		2/0/0

tract: 107	Year 2013	Zone I
Vegetation: potatoes, grapes visibility: 80% features: upper level terrace finds: - GPS: 038 4666472		
		0/0/0

tract. 05	Year 2013	Zone I
vegetation: some minor visibility: 70% features: lower level fence seen the river birds: - GPS: -		
		0/0/0

tract. 109	Year 2013	Zone I
vegetation: some minor visibility: 80% features: lower level fence seen (large - side) birds: - GPS: -		
		3/0/7

tract. 110	Year 2013	Zone I
vegetation: some minor visibility: 0% features: wide fence near the road birds: - GPS: -		
		1/0/0

tract. 111	Year 2013	Zone I
vegetation: some minor visibility: 85% features: - birds: - GPS: -		
		0/0/0

tract: 112	Year 2013	Zone I
vegetation: dum trees, garlic visibility: 70% features: near a house funds: - GPS: -		
		0/0/1

tract: 113	Year 2013	Zone I
vegetation: onions (little) visibility: 50% features: - funds: - GPS: -		
		0/0/0

tract: 114	Year 2013	Zone I
vegetation: onions (little) visibility: 50% features: - funds: - GPS: -		
		0/0/1

tract: 115	Year 2013	Zone I
vegetation: onions (little) + beans visibility: 70% features: - funds: - GPS: -		
		0/0/0

135 116

Page 53

3-2-11

Accepted: 2010-09-20
Published: 2010-10-01

garden. In some place that - 24

garden. In one above tent - 24

quido: —

GPS: 038 52 13
40° 50' 60"

44-5060

0/0/0

Tracts 117

Year 2013

Zone I

22/10/2019 22/10/2019

visibility 10%

features. Some black spots E-V.

Anders

GPS: 0836258
1675098

100-10000

000

Tract: 119

Year 2013

Three I

vestido a la vez, con el mismo fin.

visibility. 500.

Features: upper lid, same.

gundo: -

GPS 026014
026014

34-512

000

Tract: 119

2013-2014

Page I

vegetation meter

visibility 100%

features: upper level lenses

Indo-China

100-15000

761

tract: 120

Year 2013

Zone I

Vegetation:

visibility:

features:

finds:

GPS:

0536267

-4605746

2/12/0

tract: 121

Year 2013

Zone I

Vegetation:

visibility:

features:

finds:

GPS:

02594215

-4605746

0/0/0

tract: 122

Year 2013

Zone I

Vegetation:

visibility: 75%

features:

finds:

GPS:

0536408

-4605746

2/12/0

tract: 123

Year 2013

Zone I

Vegetation:

visibility: 40%

features:

finds:

tract: 124	Year 2013	Zone I
vegetation: open grass		
visibility: 75%		
features: lower level fence line		
finds: I-173		
GPS: 2746436 5945370		0/0/0

tract: 125	Year 2013	Zone I
vegetation: full cover		
visibility: 100%		
features: lower level fence line		
finds: -		
GPS: 0736657 594410		0/0/0

tract: 126	year 2013	Zone I
vegetation: full cover		
visibility: 100%		
features: low wall		
finds: -		
GPS: 539026 4165370		6/1/1

tract: 127	Year 2013	Zone I
vegetation: open grass		
visibility (poor) 5%		
features: more in the field		
finds: -		
GPS: 2184400		0/0/0

tract: 133

Year 2013

Zone I

vegetation: thin low, grassy

visibility: 60-95%

features: old terrace with old beams in the

finds: Many modern like found

GPS: 4028646.11
466575

0/16/11

★ St Paul's church (up hill)
★ check later

tract: 1

Year 2013

Zone I

vegetation:

visibility: (local low material = good large)

features: Geological point of interest

finds: led 1-2 ft down found in ground

GPS: 0386498
466737

3/0/0

★ tract: 129

Year 2013

Zone I

vegetation: thin low, grassy

visibility: 30% for 1-10'

features: upper level old terrace

finds: 1-2 ft down

GPS: 500648
466732

3/0/9

tract: 130

Year 2013

Zone I

vegetation: little on some areas

visibility: 55% - 60%

features: upper level old terrace

finds: -

GPS: 500648
466732

tract: Year 2013 Zone I
 vegetation: sparse grass
 visibility: 75%
 features: low hills of vegetation, some rocks
 finds: - 47.5% Modesto grass
 GPS: 6546 (possible that found
 5838 a hill site and some washes
 some old rocks)

tract: 132 Year 2013 Zone I
 vegetation: sparse grass
 visibility: 75%
 features: low hills of vegetation
 finds: - Modesto grass
 GPS: 6546
 4165331 0/9/0

tract: 133 Year 2013 Zone I
 vegetation: sparse grass
 visibility: 45%
 features: low hills of vegetation
 finds:
 GPS: 6386579
 4165345 2/0/0

tract: 134 Year 2013 Zone I
 vegetation: sparse grass
 visibility: 75%
 features: low hills of vegetation
 finds: - Modesto grass
 GPS: 6546
 4165331 10/10/11

tract: 135	Year 2013	Zone I
vegetation: onion		
visibility: 75%		
features: terracing near river, dry bridge		
funds: -		
GPS: 0386685 466537		2/0/0

tract: 136	Year 2013	Zone I
vegetation: onion, cross, grapes		
visibility: 75%		
features: lower level terrace near river		
funds: -		
GPS: 0386577 4665463		7/0/0

tract: 137	Year 2013	Zone I
vegetation: onion, cross, grapes		
visibility: 50%		
features: lowest level terrace near river below Zone I		
funds: -		
GPS: 0386565 4665468		0/0/0

tract: 138	Year 2013	Zone I
vegetation: onions, ^{lime} corn, potatoes		
visibility: 60%		
features: terrace above Zone I		
funds: -		
GPS: 0386575 4665475		5/0/0

tract: 139 Year 2013 Zone I
 vegetation: ~~terrace~~ corn
 visibility: 75%
 features: terrace above track I-139
 finds: -
 GPS: 0386613
 4662441 2/0/0

tract: 140 Year 2013 ~~Zone I~~
 vegetation: little corn, big onion
 visibility: 60%
 features: continuation of 139
 finds: -
 GPS: 0386617
 4665435 1/0/0

tract: 141 Year 2013 Zone I
 vegetation: little corn
 visibility: 60%
 features: continuation of I-140 22/8/4
 finds: Concentration of ceramics and
 shells in top
 GPS: 0386672
 4665538 * end Scaper found
 here in 2013 pot

tract: 142 Year 2013 Zone I
 vegetation: cucumbers, tomatoes, grapes
 visibility: 70%
 features: terrace above track I-141 15/3/0
 finds: less artifacts found in the
 terrace above track I-141

tract: 5 year 2013 zone I

vegetation: some terraced, some open with
large Oregon's lupine
visibility: 75%

features: tract above 142: higher than
the surface on the other side of the ridge
finds: —

GPS: —

2/4/0

tract: 144 year 2013 zone I

vegetation: some

visibility: 65%

features: —

finds: —

GPS: 0386758
-665505

1/0/1

tract: 145 year 2013 zone I

vegetation: some grass

visibility: 80%

features: two levels of terracing

finds: —

GPS: 0386782
-665330

2/0/1

tract: 146 year 2013 zone I

vegetation: grass

visibility: 75%

features: tract on right hand side in area
two levels of terracing
finds: —

0/0/0

tract: 47 Year 2013 Zone I
Vegetation: grass with weeds
visibility: poor (10%)
features: 4 levels of terracing
finds: -
GPS: 0386375
4665400 1/0/0

tract: 48 Year 2013 Zone I
Vegetation: 1st 1/2 of field very dense
visibility: 55%
features: level of terracing above I - 45
finds: -
GPS: 0386788
4665500 0/2/0

tract: 49 Year 2013 Zone I
Vegetation: 3rd 1/2 of field
visibility: 75%
features: two levels of terracing
finds: - modern tools 10 Sept
GPS: 0386843
4665527 0/2/0

tract: 150 Year 2013 Zone I
Vegetation: grass
visibility: 15%
features: three levels of terracing
finds: -
GPS: 0386843
4665527 0/2/0

tract: 5	Year 2013	Zone I
vegetation: scrub visibility: 100% features: two levels of terracing near the river finds: — GPS: 0386861 4665543		
		0/0/0

tract: 152	Year 2013	Zone I
vegetation: mixed vegetation, beans visibility: 90% features: tract ends at wall of modern house finds: Mod. tools not kept. GPS: 0386888 4665564		
		0/15/0

tract: 153	Year 2013	Zone I
vegetation: cut grass visibility: 10% features: ^{upper level} terrace near a house finds: — GPS: 0386762 4665557		
		0/0/0

tract: 154	Year 2013	Zone I
vegetation: alfalfa, cut grass visibility: 35% features: two levels of terracing. finds: —		
		0/0/0

tract: 55	Year 2013	Zone I
vegetation: green beans, garlic		
visibility: 95%		
features: continuation of I-154		
finds: -		
GPS: 0386726 4665562		6/0/1

tract: 156	Year 2013	Zone I
vegetation: green beans		
visibility: 80%		
features: lower level terrace		
finds: -		
GPS: 0386719 4665607		0/1/0

tract: 157	Year 2013	Zone I
vegetation: green beans, little green		
visibility: 95% for beans, 60% for green		
features: upper level terrace area		
finds: -		
GPS: 0386719 4665595		0/1/0

tract: 158	Year 2013	Zone I
vegetation: little green		
visibility: 55%		
features: lowest level terrace area		
finds: -		
		0/0/0

tract: 150 Year 2013 Zone I

vegetation: grass

visibility: 10%

features: terrace near river

funds: -

GPS: 0386739
46651055

0/0/1

tract: 160 Year 2013 Zone I

vegetation: grass weeds

visibility: 20%

features: beneath abandoned house

funds: -

GPS: 0386752
46651065

0/0/1

tract: 101 Year 2013 Zone I

vegetation: grass

visibility: 10%

features: terracing

funds: -

GPS: 0386977
4665822

0/0/0

tract: 162 Year 2013 Zone I

vegetation: sparse

visibility: 15%

features: wide open field terrace

funds: -

0/0/0

tract: 155 Year 2013 Zone I
 vegetation: dense thicket, some
 visibility: 60% 6/0/2
 features: two levels of terracing, some
 of track 1-162 + possible road
 finds: - and
 GPS: 0387179 sample found 2/0/0
 4665977

tract: 1-163 Year 2013 Zone I
 vegetation: associated w/tract 1-163
 visibility: Possible rock shelter
 features: a lot of dense vegetation
 finds: difficult to tell
 GPS: 0387210
 4665955

tract: 164 Year 2013 Zone I
 vegetation: grass and weeds, alfalfa
 visibility: 35%
 features: two levels of terracing
 finds: -
 GPS: 0387280 2/0/0
 4666437

tract: 165 Year 2013 Zone I
 vegetation: Weeds
 visibility: 80%
 features: soil very gravelly on upper level
 finds: -

tract: 165 Year 2013 Zone I
 Vegetation: out-
 visibility: 100%
 features: pebbly/stony soil - light bird terrain
 finds: -
 GPS: 0387434
 4666062 0/0/0

tract: 167 Year 2013 Zone I
 Vegetation: mixed grass, live tree
 visibility: 75%
 features: near a house
 finds: -
 GPS: 0387337
 4666097 2/0/0

tract: 168 Year 2013 Zone I
 Vegetation: corn grass, pineapples
 visibility: 95%
 features: two birds of feathering near a
 birdhouse
 finds: -
 GPS: 0387232
 4666053 11/1/0

tract: 169 Year 2013 Zone I
 Vegetation: ^{200m} corn, live trees
 visibility: 100%
 features: house near 2 medium house
 finds: Medium size bird house
 0387232 1/1/0

tract: 170	Year 2013	Zone I
vegetation: little visibility: 0% features: continuation of tract 169 finds: - GPS: -		
		0/0/0

tract: 171	Year 2013	Zone I
Vegetation: little visibility: 10% features: Near modern houses finds: - GPS: 039 57195 4666053		
		0/1/0

tract: 172	Year 2013	Zone I
vegetation little visibility: 100% features: continuation of I-171 finds: GPS: 039 57149 4666050		
		1/0/3

tract: 173	Year 2013	Zone I
vegetation: grass visibility: 5% features: barrier and a house finds: - GPS: 039 57149 4666050		
		0/0/0

tract: 174	Year 2013	Zone I
Vegetation: tall grass, some trees visibility: 5% features: house near house finds: - GPS: 02357135 4666106		
		0/0/0

tract: 175	Year 2013	Zone I
vegetation: tall grass, some trees visibility: 90% features: continuation of I-174 finds: - GPS: 0347226 4666106		
		2/0/0

tract: 176	Year 2013	Zone I
vegetation: tall grass visibility: 0% features: continuation of I-175 finds: - GPS: -		
		0/0/0

tract: 177	Year 2013	Zone I
vegetation: tall grass, some trees visibility: 100% features: near house finds: -		
		3/0/0

tract: 177	YEAR 2013	Zone I
vegetation: potato, cabbage, onion. visibility: 75% features: ^{low} tenanted road a house. finds: - GPS: 0297631 4666307		
		5/0/0

tract: 179	YEAR 2013	Zone I
vegetation: potato, onion visibility: 80% features: continuation of tract I. 178 finds: - GPS: 0387140 4666321		
		2/0/0

tract: 180	YEAR 2013	Zone I
vegetation: little onion grass, long onion visibility: 100% features: continuation of I. 179 finds: - GPS: 0289581 4666297		
		6/1/0

tract: 181	YEAR 2013	Zone I
vegetation: ^{little} CORN, grass visibility: 75-90% features: two levels of narrow ^{the river} streaming near finds: - GPS: 0289581 4666297		
		6/1/0

tract: 182 Zone I Year 2013

Vegetation: grass, dirt, weeds

visibility: 35% - 90% (in dirt areas)

features: two doublets of intruding

finches: -

GPS: 0380535
4066106

0/0/0

tract: 183 Year 13 Zone I

Vegetation: grass, dirt, ~~leaves~~ weeds

visibility: 65% - 70%

features: none

finches: -

GPS: 0377557
4066012

0/0/0

Tract: 184 Year 13 Zone I

Vegetation: grass, dirt, ferns, some

visibility: 100%

features: -

finches: -

GPS: 0384445
4066191

1/2/0

tract: 185 Year 2013 Zone I

Vegetation: grass, dirt, ferns, some

visibility: 70%

features: -

finches: - only common finches and light

tract: 186	Year 2013	Zone I
vegetation: little trees, little shrubs, little		
visibility: 100%		
features: -		
finds: -		
GPS: 0384411 4606258		2/10/0

tract: 187	Year 2013	Zone I
vegetation: little trees, grass, alfalfa		
visibility: 100% in tobacco, 25% in grass		
features: -		
finds: -		
GPS: 0384411 46066292		1/2/0

tract: 188	Year 2013	Zone I
vegetation: little trees, grass		
visibility: 100%		
features: upper level tobacco, 100% I-187		
finds: -		
GPS: 0384440 4663319		0/0/0

tract: 189	Year 2013	Zone I
vegetation: tobacco, grass, 100%		
visibility: 100%		
features: upper level tobacco, 100%		
finds: - Modern tree, 100% Veget		
GPS: 0384440 4663319		0/1/0

tract: 185	Year 2013	Zone I
Vegetation: grassy grassy area		
visibility: 15%		
features: on upper part terrace above		
I-194: tract near modern house		
finds: - Modern site not kept		
GPS: 0384461 4666221		9/1/0

tract: 191	Year 2013	Zone I
Vegetation: grassy		
visibility: 100%		
features: tract near modern house		
finds: Modern site not kept		
GPS: 0384476 4666133		0/11/0

tract: 192	Year 2013	Zone I
Vegetation: grassy		
visibility: 100%		
features: -		
finds: -		
GPS: 0384482 4666166		1/0/0

tract: 193	Year 2013	Zone I
Vegetation: grassy		
visibility: 100%		
features: -		
finds: - Modern site not kept		
GPS: 0384497 4666199		0/2/0

tract: 194	Year 2013	Zone I
Vegetation: dense shrubs, keams		
visibility: 90%		
features: -		
finds: Modern tile not kept		
GPS: 0384533 466653		

1/12/0

tract: 195	Year 2013	Zone I
Vegetation: dense shrubs		
visibility: 95%		
features: tract near modern house		
finds: Modern tile not kept		
GPS: 0384533 4666150		

0/11/0

tract: 196	Year 2013	Zone I
Vegetation: dense shrubs		
visibility: 100%		
features: Soil was very stony; too much of digging		
finds: -		
GPS: 0384533 466654		

0/6/0

tract: 197	Year 2013	Zone I
Vegetation: tobacco		
visibility: 100%		
features: two levels of digging near a modern house		
finds: -		

10/10

tract: 198	Year 2013	Zone I
Vegetation: moderate		
visibility: 100%		
features: upper level terrace above \pm 27		
funds: -		
GPS: 0334585 4666207		0/0/0

tract: 199	Year 2013	Zone I
Vegetation: moderate		
visibility: 0%		
features: two levels of terracing		
funds: -		
GPS: -		0/0/0

tract: 200	Year 2013	Zone I
Vegetation: ^{little} moderate , ^{little} moderate ^{clans} moderate , little moderate		
visibility: 100%		
features: -		
funds: - Moderate tiles not kept		0/8/0
GPS: 0334658 4666100		

tract: 201	Year 2013	Zone I
Vegetation: moderate		
visibility: 100%		
features: -		
funds: -		
GPS: -		0/0/0-

tract 202

Year 2013

Zone I

Vegetation: 100%

visibility: 100%

features: -

finds: Modern tile not kept

0/2/0

GPS: 037463/
4666005

tract: 203

Year 2013

Zone I

Vegetation: 100%

visibility: 100%

features: a lot of red soil (terra rossa)

finds: a lot of iron ore found in red soil (terra rossa)

GPS: 038
4666005

tract: 204

Year 2013

Zone I

Vegetation: little onions, & other, tomatoes, leon

visibility: 175%

features: terra rossa

finds: a lot of iron ore found in terra rossa

GPS: 0384456
5166722

tract: 205

Year 2013

Zone I

Vegetation: little onions

visibility: 80%

features: terra rossa

finds: iron ore not kept

0/0/0

tract: 206	Year 2013	Zone I
Vegetation: little trees		
visibility: 100%		
features: - terrace soil		0/0/0
birds: -		
GPS: 0384429 4665822		

tract: 207	Year 2013	Zone I
Vegetation: little trees		
visibility: 100%		
features: terrace soil		0/0/0
birds: -		
GPS: 0384415 4665823		

tract: 208	Year 2013	Zone I
Vegetation: little trees		
visibility: 100%		
features: lower level terrace, red soil - terrace soil		0/0/0
birds: -		
GPS: 0384439 4665809		

tract: 209	Year 2013	Zone I
Vegetation: little trees, grass, big trees		
visibility: 75%		
features: terrace soil		0/0/0
birds: -		

tract: S-00	Year 2013	Zone I
Vegetation:	ROCK Mt. Páras	
visibility:		
features:		
finds:		* Derro
GPS:	0335105 4669502	Jurri Kocurek

tract: S-00	Year 2013	Zone I
Vegetation:	Toponym → Shogla in Derro →	
visibility:	for more recordings of 20100.	
features:		
finds:		
GPS:		

tract:	Year 2013	Zone I
Vegetation:		
visibility:		
features:		
finds:		
GPS:		

tract:	Year 2013	Zone I
Vegetation:		
visibility:		
features:		
finds:		