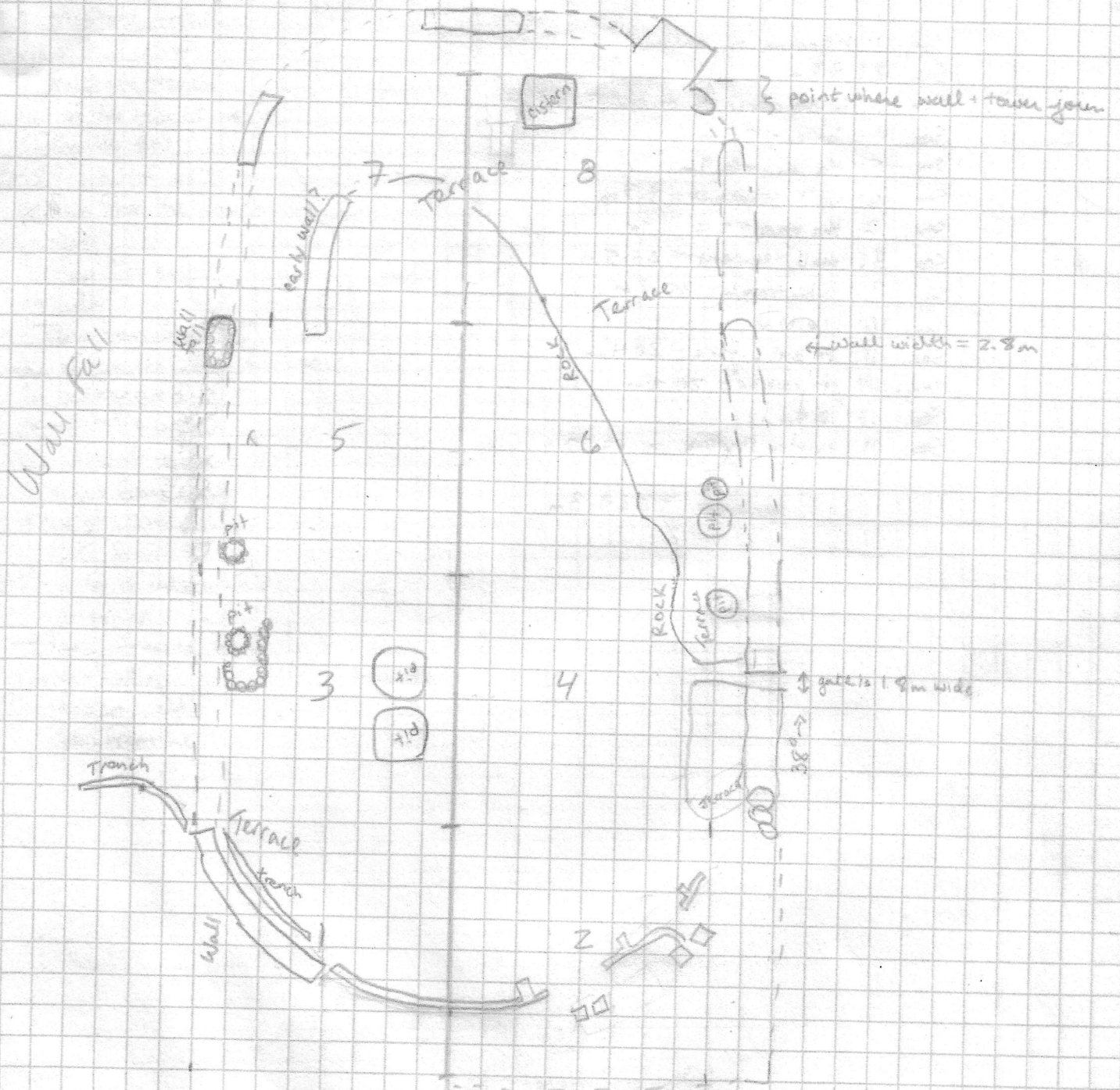


Bearing 30° ↑



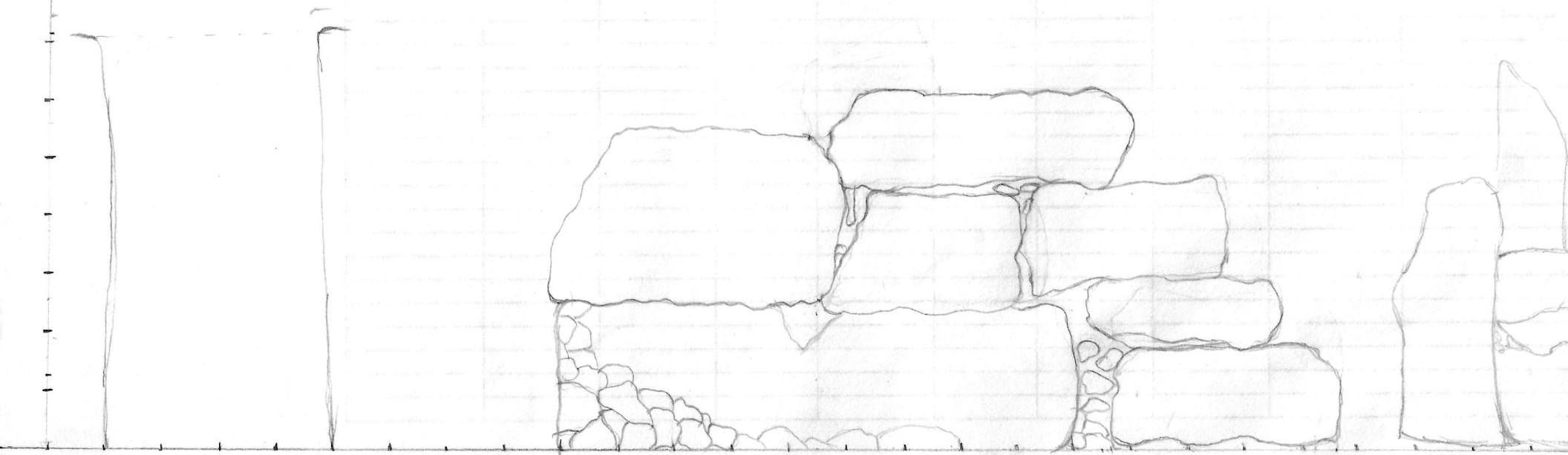
Site 001 - Kratullimadki

2011



Gate at Site 001

PASH 01-06-10

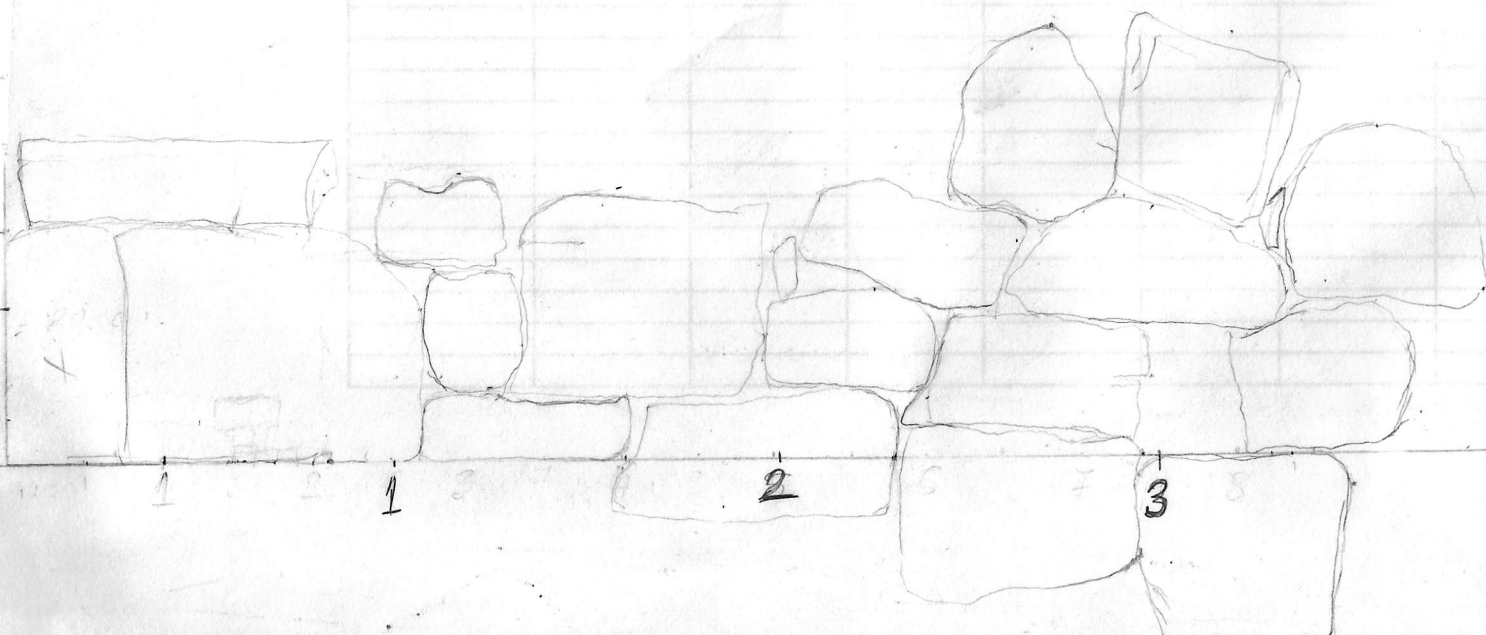


1:20 cm

15m ↓ → 4,4

Wall Segment At North End of Site 001  
To the West of Tower

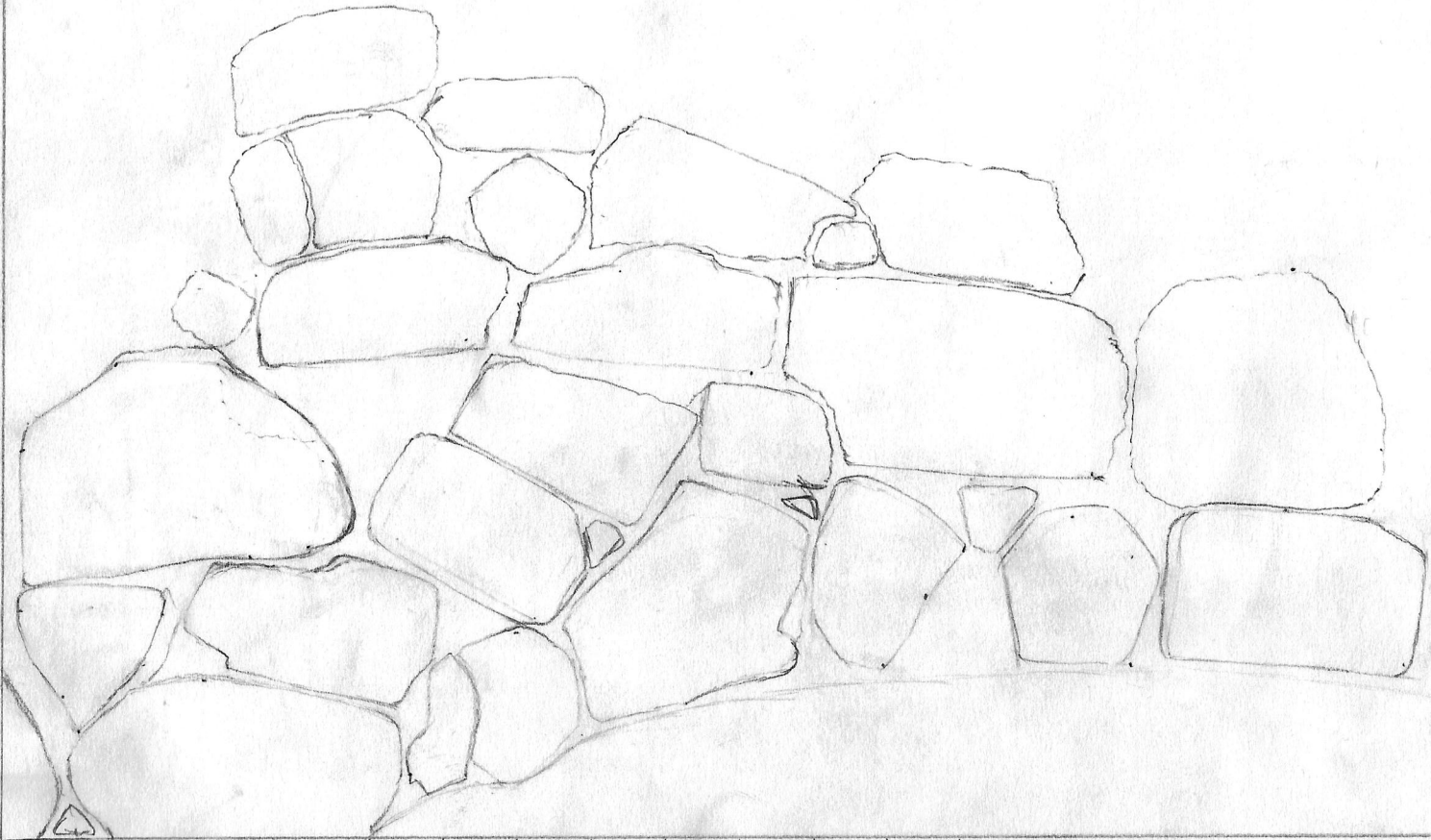
PASH 01-06-10



1 cm = 20 cm

First Wall Segment to the South of Gate at Site 001

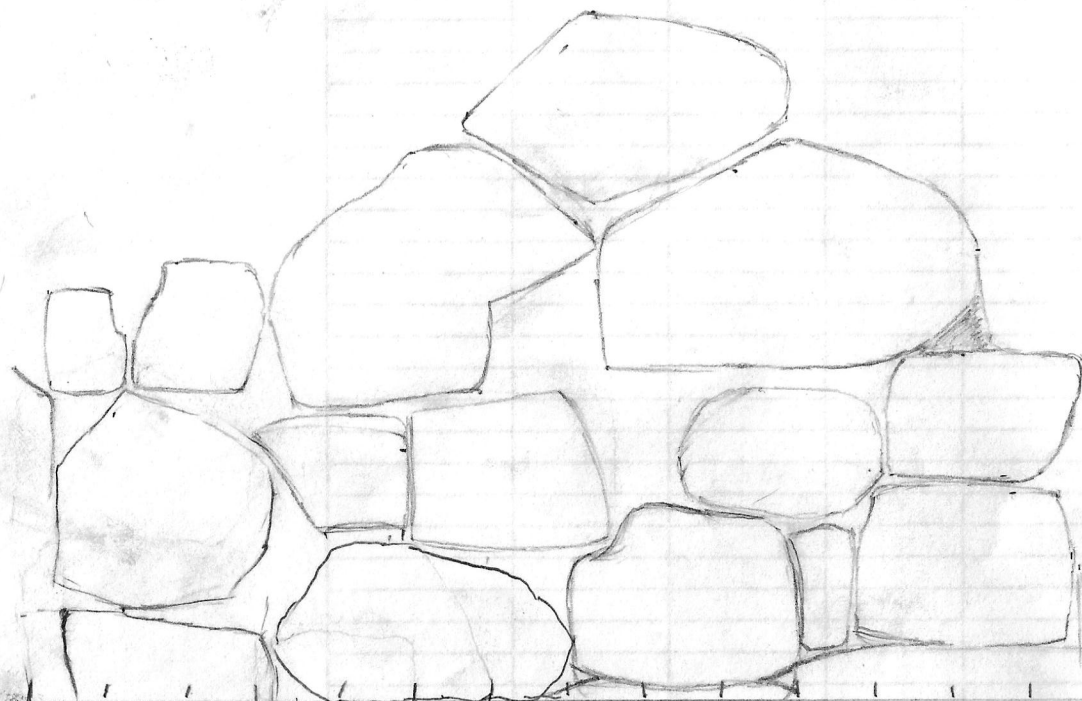
PASH 01-06-10



← 3.45 m →

Second Wall Segment to the South of Gate at Site 001

PASH 01-06-10



20cm

← 3m →

⇒

Kratul i Madh

PASH 01 June 2010

Perimeter

Segment #	Description	Length (meters)
1	Beginning of gate	26.5m
2		9.8m
3	To the corner of tower	11.7m
4	Tower	5.9m
5	The gap	6.9m
6	Wall segment	8.3m
7	The gap #2	14.9m
8	Wall segment #2	5m
9	To big trench	45.2m
10		16.6m
11	To axis flag	20.4m
12	To corner	20.2m
13		10.5m
14	Back to starting point	27.4m

Total  
Perimeter = 229.3m

01 June 2010

L.B.'s camera

photo #	Description
001-003	Military trenches; view from the west
004	military trench; view from the south
005	Military trench; view from the east
006	view of the line of walls; view from the SW
007-008	tract of walls near gate; view from the south
009-011	gate; view from the east
012	corridor; view from the SW
013	line of walls. Shkoder in background; view from the north
014	Tower; view from the east
015	Tower; view from the SE
016-017	View of western side of tower
018-019	Students drawing wall
020	Range-finding
021-022	Earlier wall; view from west