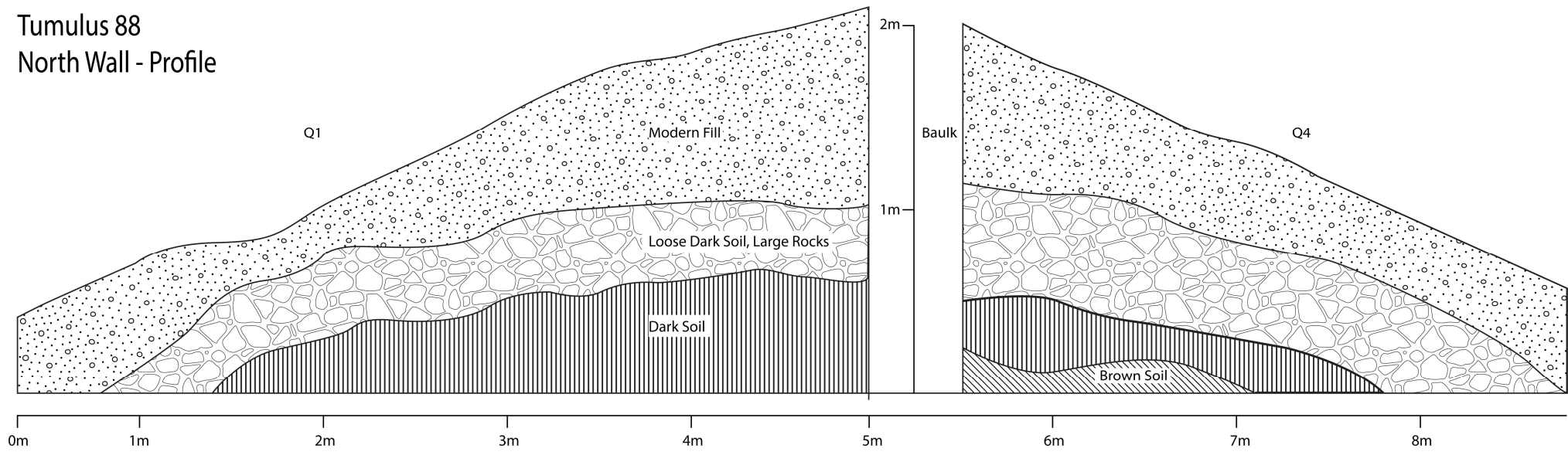
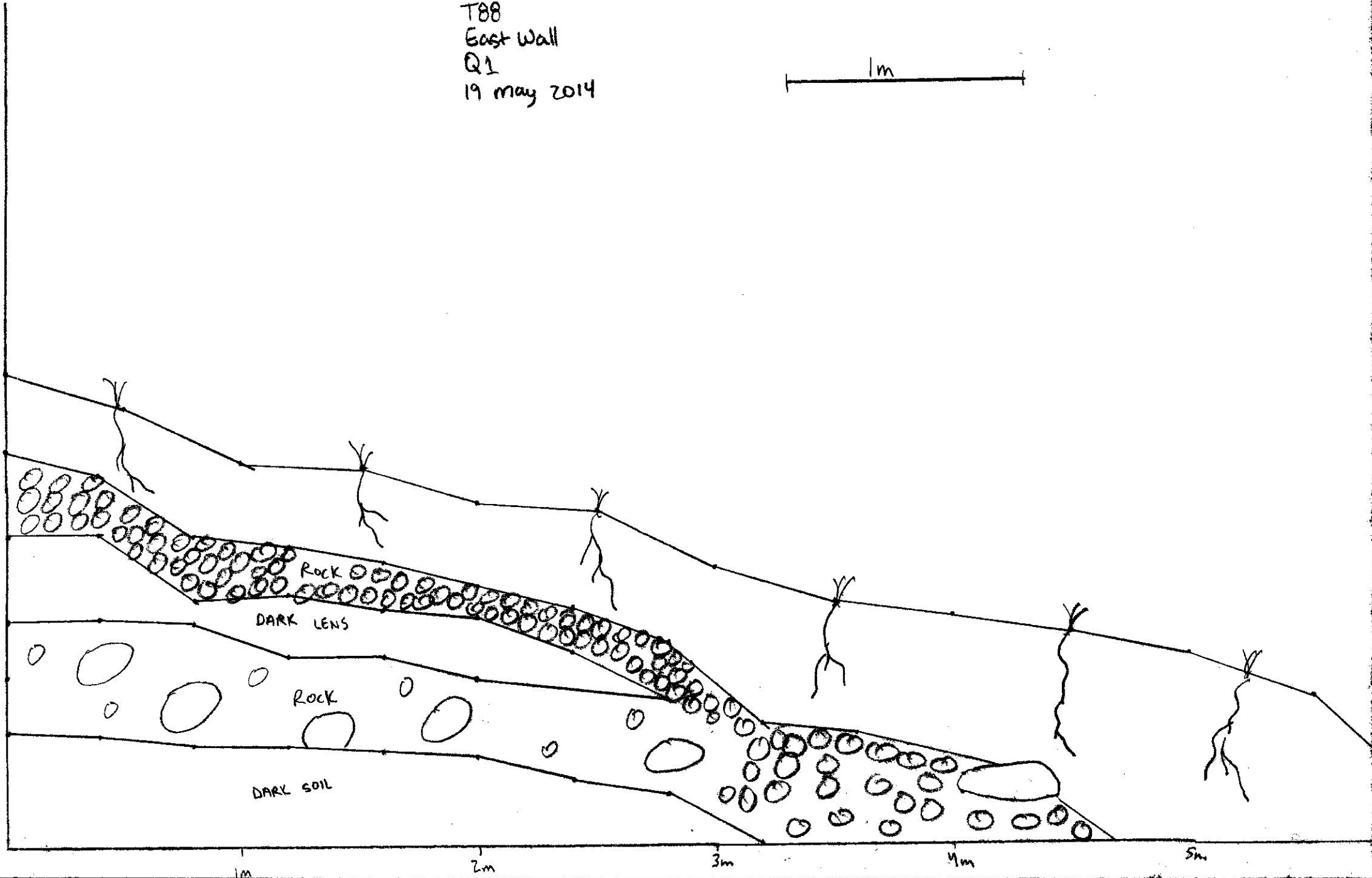


Tumulus 88
North Wall - Profile



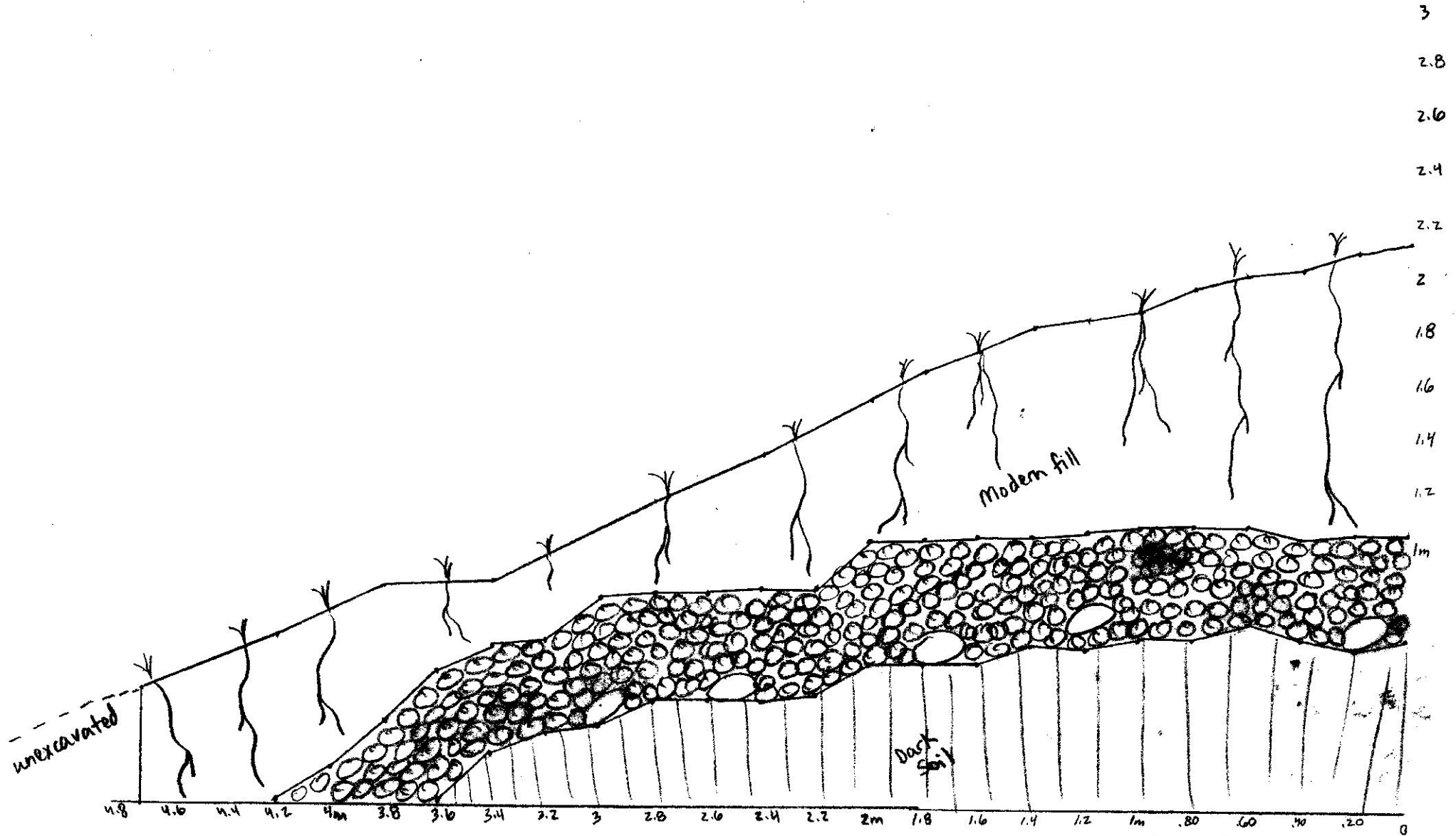
T88
East Wall
Q1
19 May 2014

1m



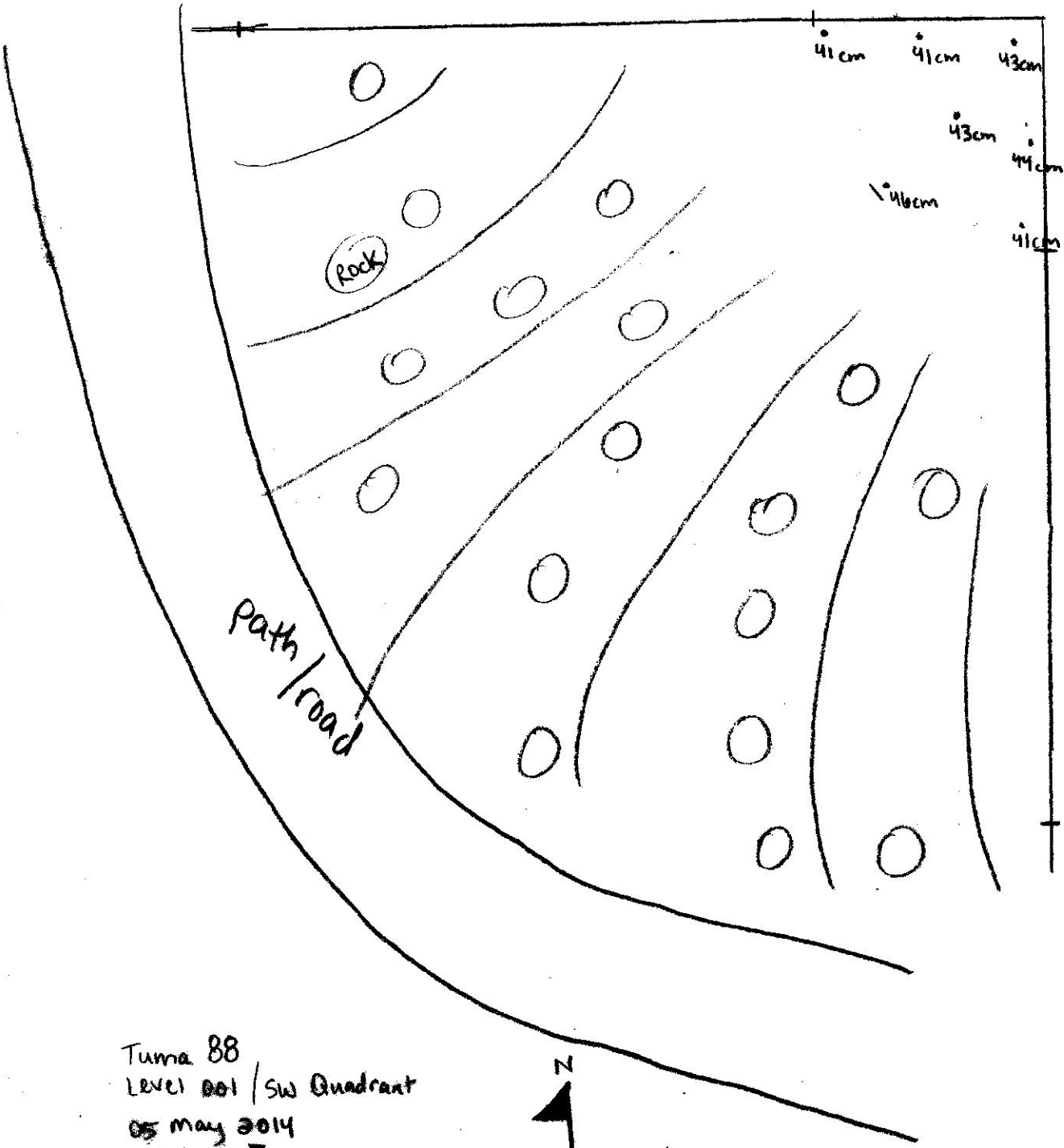
TBB
Q1
North Wall
19 May 2014

1m



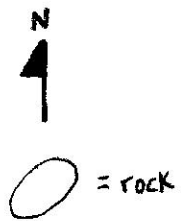
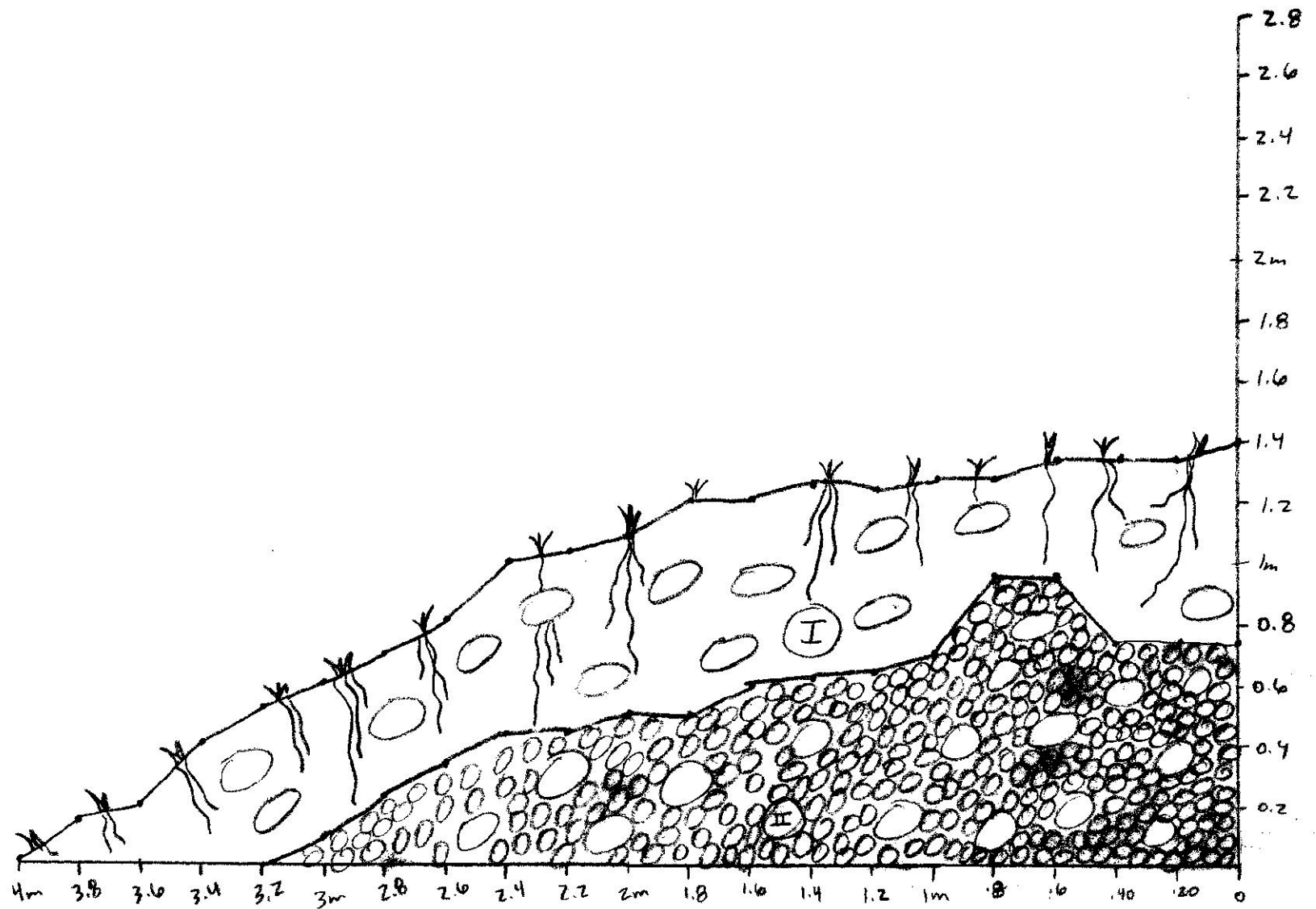
unexcavated mound

unexcavated mound



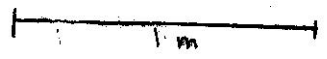
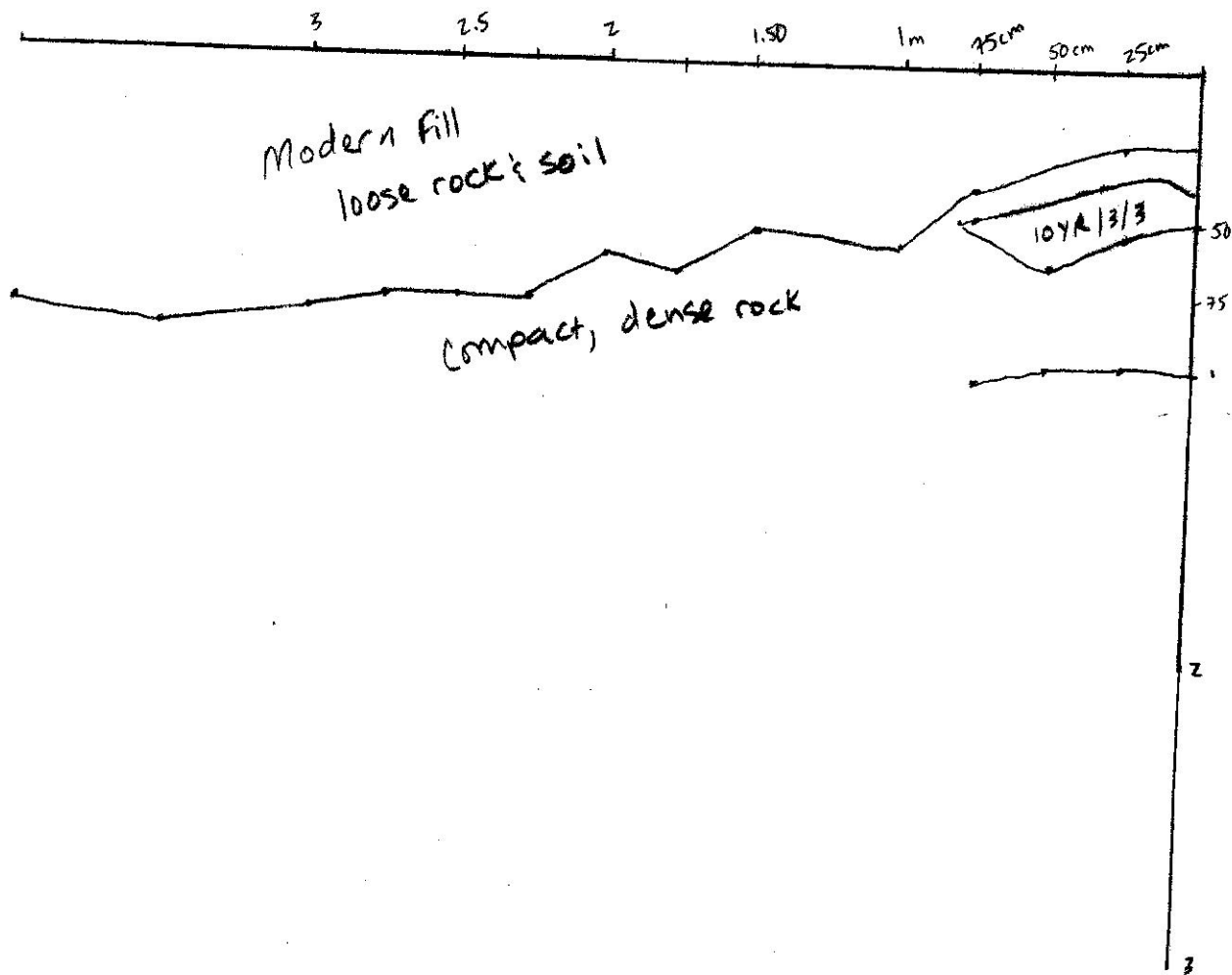
Tuna 88
LEVEL 001 / SW Quadrant
05 May 2014
Quadrant I





North Wall
TBB
Q1
DB May 2014
Bottom of Level 003

I = 10YR 3/3 Dark Brown
II = 10YR 2/2 Very Dark Brown

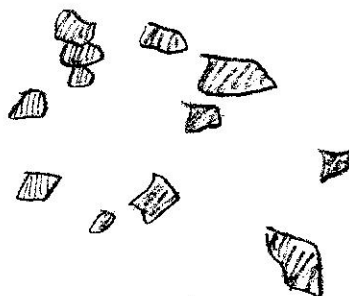


08 May 2014
 North wall profile
 TBB, Q1
 Level 003



1.2 m

1 m



10 TR 2/2 Very Dark Brown


Tuma 088

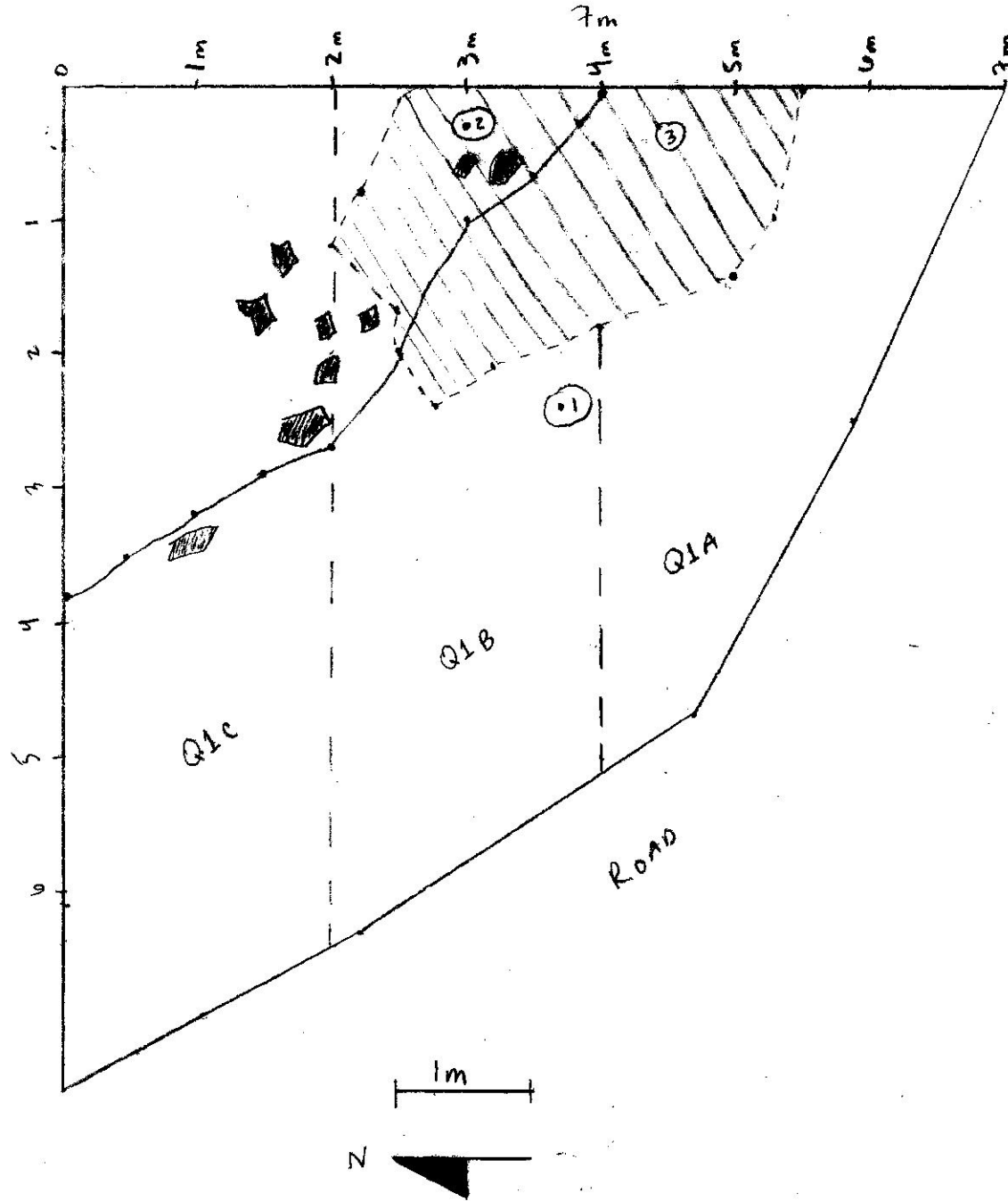
Q1

Level 004

* Feature D1 *

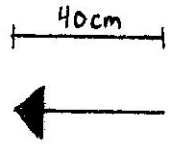
09 May 2014

 = sherds



- 1 = prehistoric sherd
- 2 = metal nail? pin?
- 3 = metal + ceramic cluster
- = rock
- ▨ = Cobble-filled area

T88
 Q1
 Level 005 (bottom)
 15 May 2014



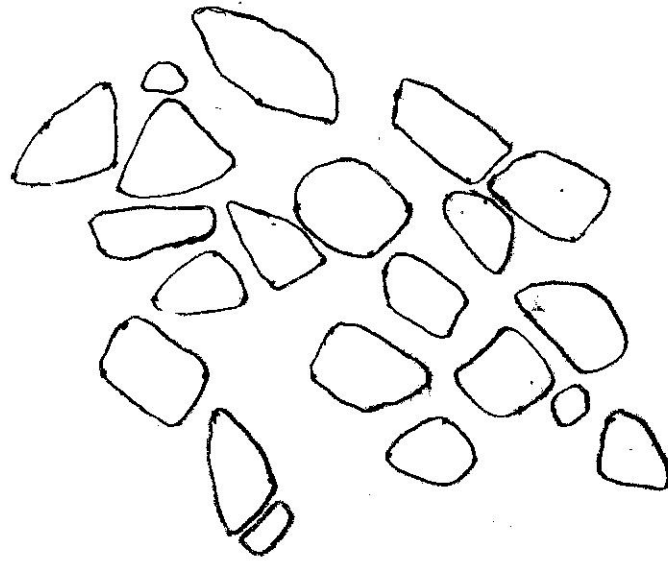
East wall

1m

2m

North Wall

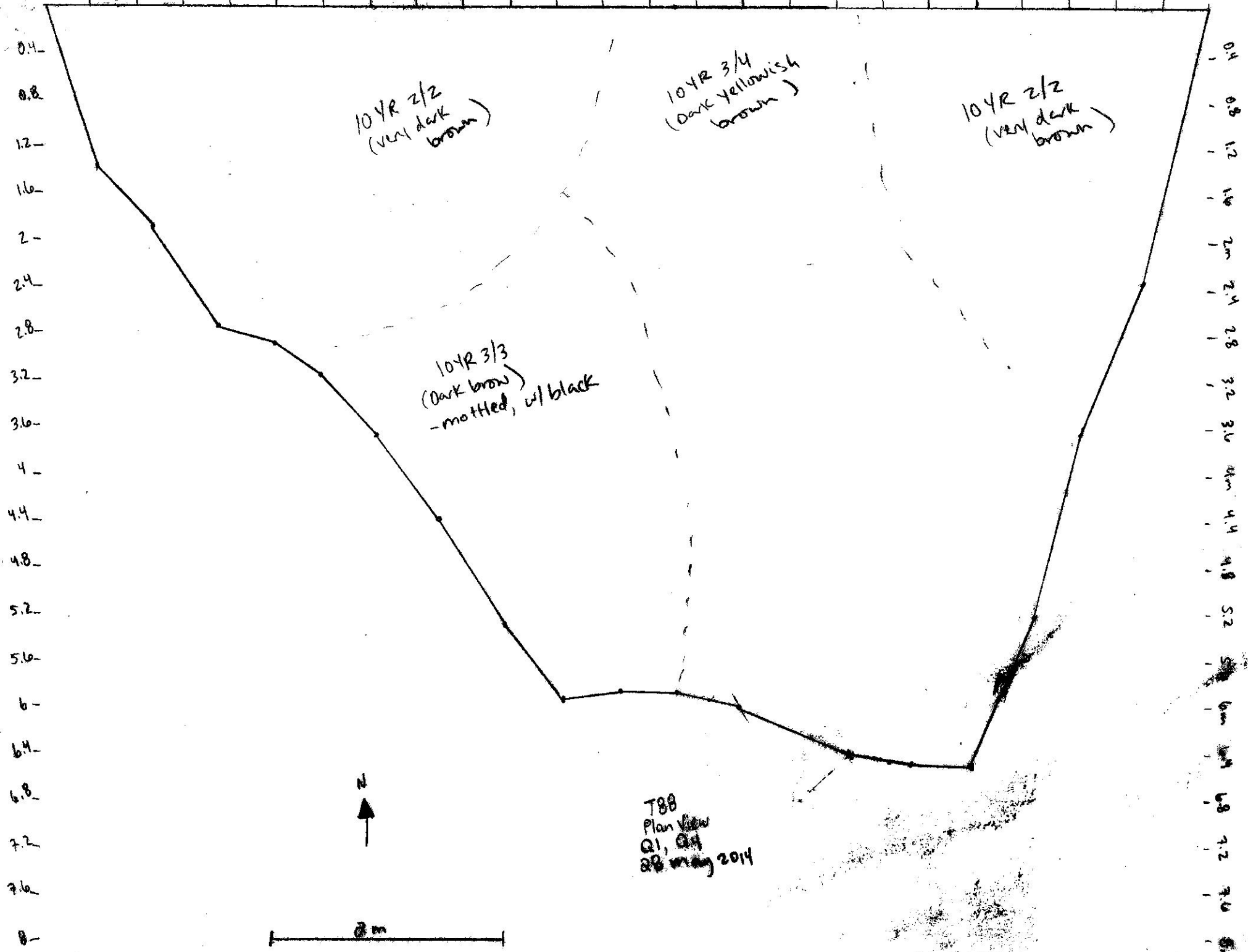
2m



TUMA 88
19 May 2014
End Level 006
Q1

Drawn by: Sylvia Deskaj
Amy Michael

0.4 0.8 1.2 1.6 2m 2.4 2.8 3.2 3.6 4m 4.4 4.8 5.2 5.6 6m 6.4 6.8 7.2 7.6 8m 8.4 8.8 9.2 9.6 10m



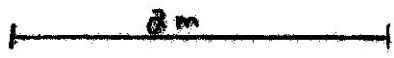
104R 2/2
(very dark brown)

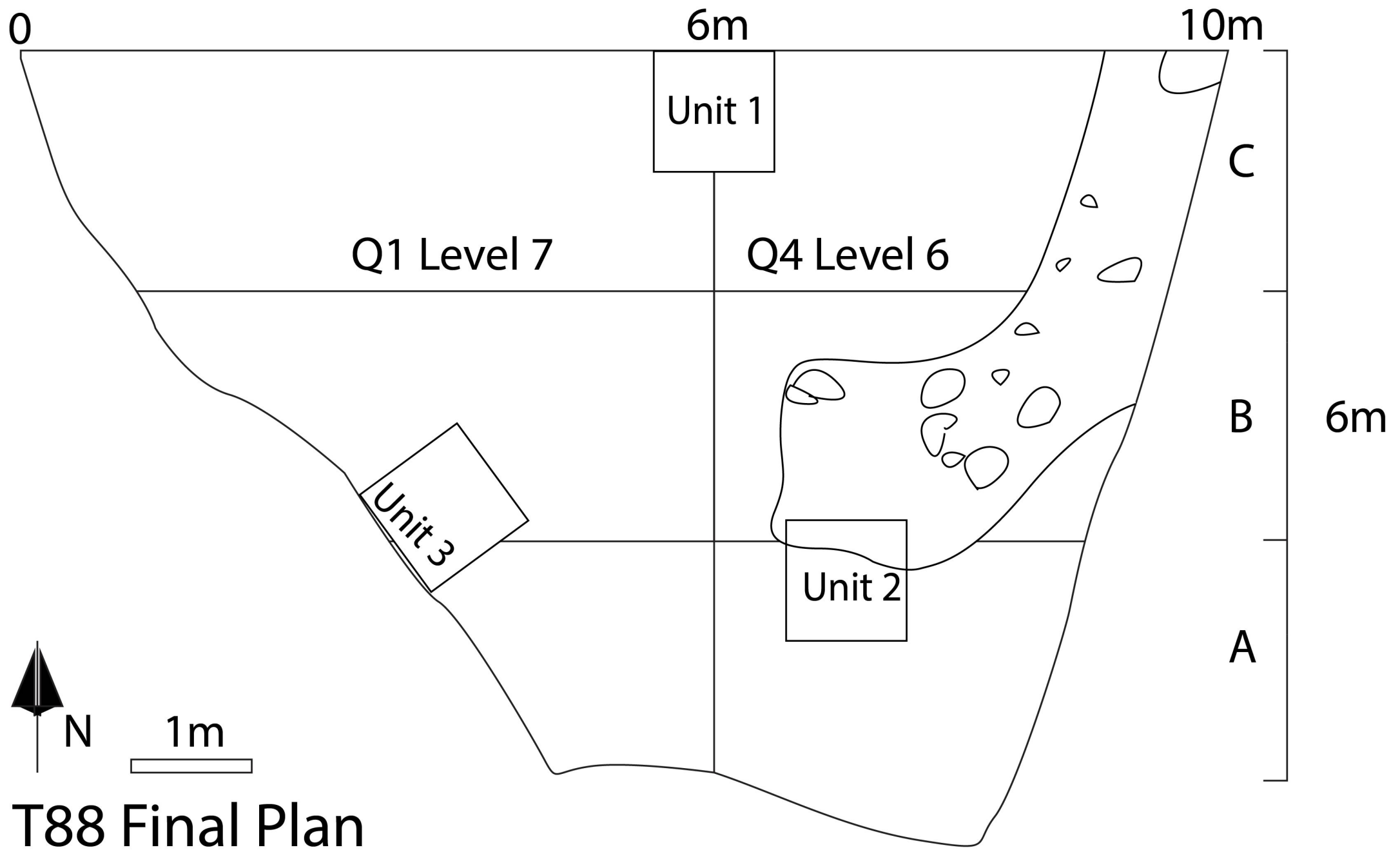
104R 3/4
(dark yellowish brown)

104R 2/2
(very dark brown)

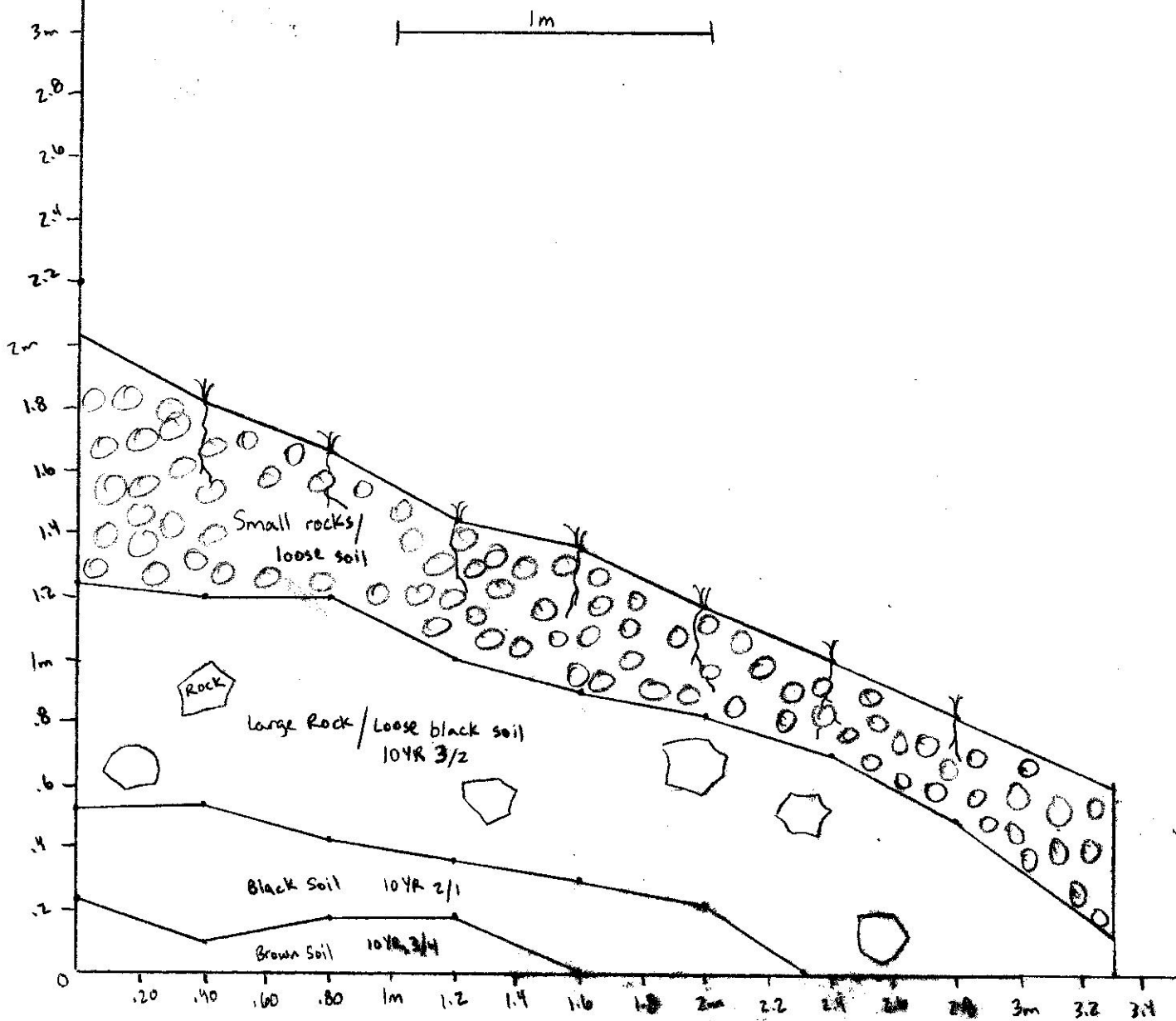
104R 3/3
(dark brown)
- mottled, w/ black

T88
Plan View
Q1, Q4
28 May 2014

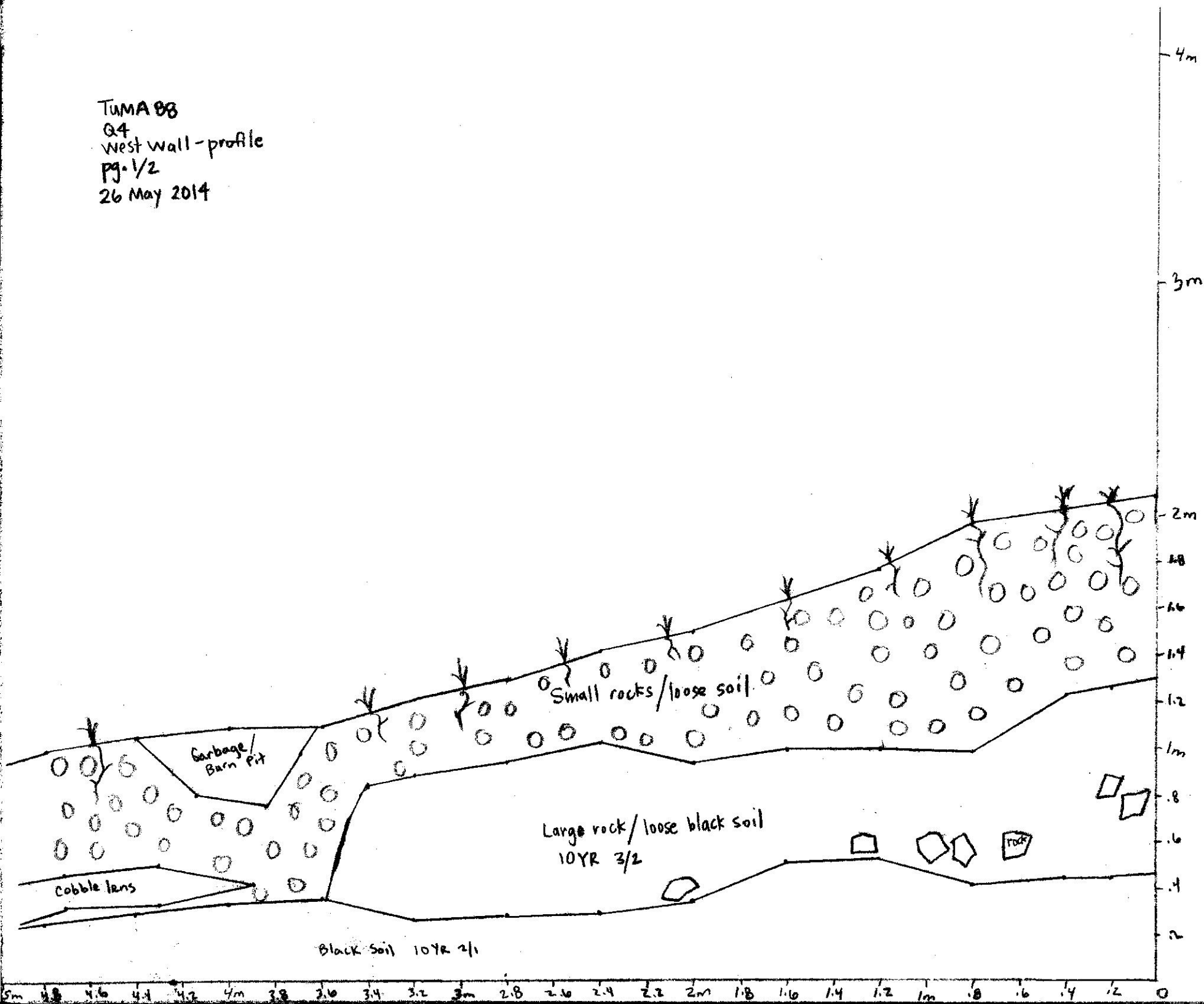




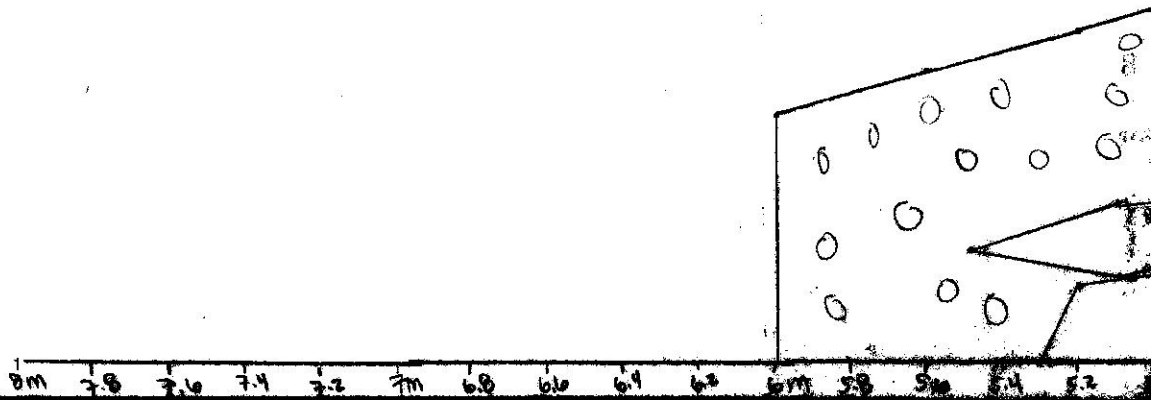
TBB
D4
North Wall - Profile
26 May 2014



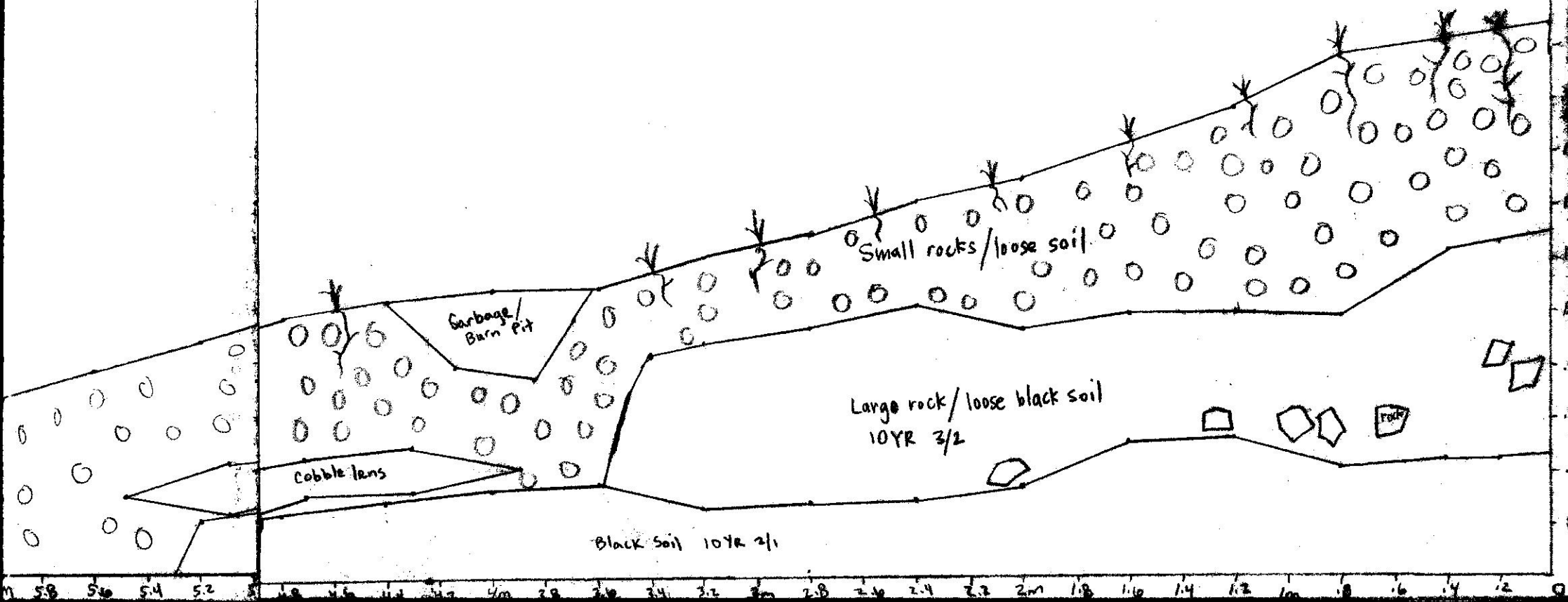
TUMA 88
Q4
West wall - profile
Pg. 1/2
26 May 2014



TUMA 88
Q4
West Wall - profile
pg. 2/2
26 May 2014



TUMA 88
Q4
West wall - profile
pg. 1/2
26 May 2014



T88 Q4
West Profile

